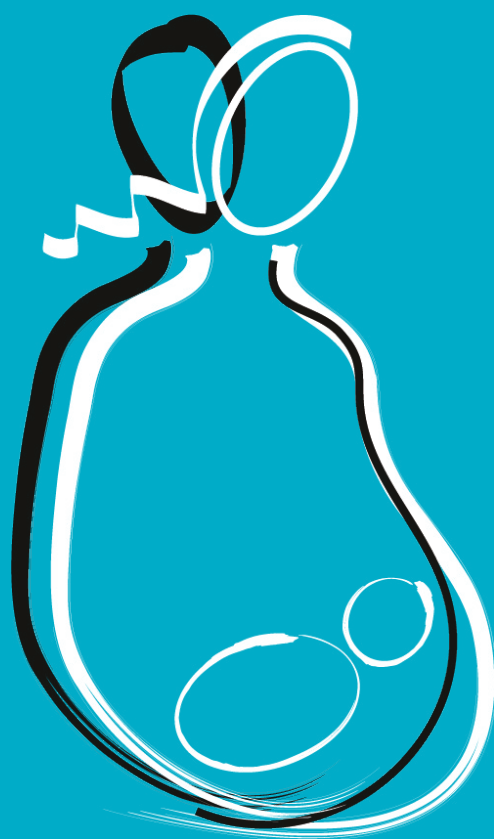


WHO Labour Care Guide

USER'S MANUAL



World Health
Organization

human
reproduction
programme **hrp.**
research for impact
UNDP · UNFPA · UNICEF · WHO · WORLD BANK

WHO Labour Care Guide

User's Manual



WHO labour care guide: user's manual

ISBN 978-92-4-001756-6 (electronic version)

ISBN 978-92-4-001757-3 (print version)

© **World Health Organization 2020**

Some rights reserved. This work is available under the Creative Commons Attribution-NonCommercial-ShareAlike 3.0 IGO licence (CC BY-NC-SA 3.0 IGO; <https://creativecommons.org/licenses/by-nc-sa/3.0/igo>).

Under the terms of this licence, you may copy, redistribute and adapt the work for non-commercial purposes, provided the work is appropriately cited, as indicated below. In any use of this work, there should be no suggestion that WHO endorses any specific organization, products or services. The use of the WHO logo is not permitted. If you adapt the work, then you must license your work under the same or equivalent Creative Commons licence. If you create a translation of this work, you should add the following disclaimer along with the suggested citation: This translation was not created by the World Health Organization (WHO). WHO is not responsible for the content or accuracy of this translation. The original English edition shall be the binding and authentic edition".

Any mediation relating to disputes arising under the licence shall be conducted in accordance with the mediation rules of the World Intellectual Property Organization (<http://www.wipo.int/amc/en/mediation/rules/>).

Suggested citation. WHO labour care guide: user's manual. Geneva: World Health Organization; 2020. Licence: CC BY-NC-SA 3.0 IGO.

Cataloguing-in-Publication (CIP) data. CIP data are available at <http://apps.who.int/iris>.

Sales, rights and licensing. To purchase WHO publications, see <http://apps.who.int/bookorders>. To submit requests for commercial use and queries on rights and licensing, see <http://www.who.int/about/licensing>.

Third-party materials. If you wish to reuse material from this work that is attributed to a third party, such as tables, figures or images, it is your responsibility to determine whether permission is needed for that reuse and to obtain permission from the copyright holder. The risk of claims resulting from infringement of any third-party-owned component in the work rests solely with the user.

General disclaimers. The designations employed and the presentation of the material in this publication do not imply the expression of any opinion whatsoever on the part of WHO concerning the legal status of any country, territory, city or area or of its authorities, or concerning the delimitation of its frontiers or boundaries. Dotted and dashed lines on maps represent approximate border lines for which there may not yet be full agreement.

The mention of specific companies or of certain manufacturers' products does not imply that they are endorsed or recommended by WHO in preference to others of a similar nature that are not mentioned. Errors and omissions excepted, the names of proprietary products are distinguished by initial capital letters.

All reasonable precautions have been taken by WHO to verify the information contained in this publication. However, the published material is being distributed without warranty of any kind, either expressed or implied. The responsibility for the interpretation and use of the material lies with the reader. In no event shall WHO be liable for damages arising from its use.

Contents

Acknowledgements	v
Acronyms and abbreviations	vi
Introduction	1
Objective of this manual	2
Target audience	2
The Labour Care Guide	2
For whom should the LCG be used?	2
When should the LCG be initiated?	2
Where should the LCG be used?	3
Structure of the LCG	3
How to use the Labour Care Guide	5
Labour monitoring to action	5
Using the LCG	5
Nomenclature to complete the LCG	6
How to complete Section 1: Identifying information and labour characteristics at admission	8
How to complete Section 2: Supportive care	9
How to complete Section 3: Care of the baby	11
How to complete Section 4: Care of the woman	14
How to complete Section 5: Labour progress	17
How to complete Section 6: Medication	20
How to complete Section 7: Shared decision-making	21
References	23
Annex 1: WHO Labour Care Guide	24
Annex 2: Adapting the WHO Labour Care Guide	25
Annex 3: Introducing the WHO Labour Care Guide into labour wards	26
Annex 4: Summary list of recommendations on intrapartum care for a positive childbirth experience	27
Annex 5: Basic equipment and supplies for intrapartum care	32

Acknowledgements

The Departments of Sexual and Reproductive Health and Research and of Maternal, Newborn, Child and Adolescent Health and Ageing of the World Health Organization (WHO) gratefully acknowledge the contributions that many individuals and organizations have made to the development of this manual.

Fernando Althabe, Mercedes Bonet and Olufemi Oladapo, of the WHO Department of Sexual and Reproductive Health and Research, initiated and coordinated work on this manual. The following WHO headquarters staff contributed to the manual-development process at various stages: Maurice Bucagu, Frances McConville and Anayda Portela.

WHO extends sincere thanks to Richard Adanu, Stine Bernitz, Blami Dao, Soo Downe, Justus Hofmeyr, Caroline Homer, Vanora Hundley, Barbara Levy, Tina Lavender, David Lissauer, Robert Pattinson, João Paulo Souza, Mary Ellen Stanton, Jeff Stringer, Petra ten Hoopen-Bender and Valerie Vannevel, who served as members of the Technical Working Group.

We appreciate the feedback provided by a large number of international stakeholders during the survey and evaluation projects that took place as part of the manual-development process. Special thanks go to all research partners for their contributions to the manual during a multicountry evaluation of the Labour Care Guide that was coordinated by Joshua Vogel and Veronica Pingray. Veronica Pingray coordinated the international survey for the original version of the guide, drafted the first version of the manual and coordinated stakeholders' input.

The United States Agency for International Development (USAID) and the United Nations Development Programme (UNDP)/United Nations Population Fund (UNFPA)/United Nations Children's Fund (UNICEF)/WHO/World Bank Special Programme of Research, Development and Research Training in Human Reproduction (HRP), a cosponsored programme executed by the WHO, funded this work. The views of the funding bodies have not influenced the content of this manual.

Acronyms and abbreviations

bpm	beats per minute
CCT	Controlled cord traction
DBP	Diastolic blood pressure
FHR	Fetal heart rate
IM	Intramuscular
IU	International units
IV	Intravenous
LCG	Labour Care Guide
PPH	Postpartum haemorrhage
SBP	Systolic blood pressure
UNICEF	United Nations Children's Fund
UNFPA	United Nations Population Fund
USAID	United States Agency for International Development
WHO	World Health Organization

预览已结束，完整报告链接和二维码如下：

https://www.yunbaogao.cn/report/index/report?reportId=5_23653

