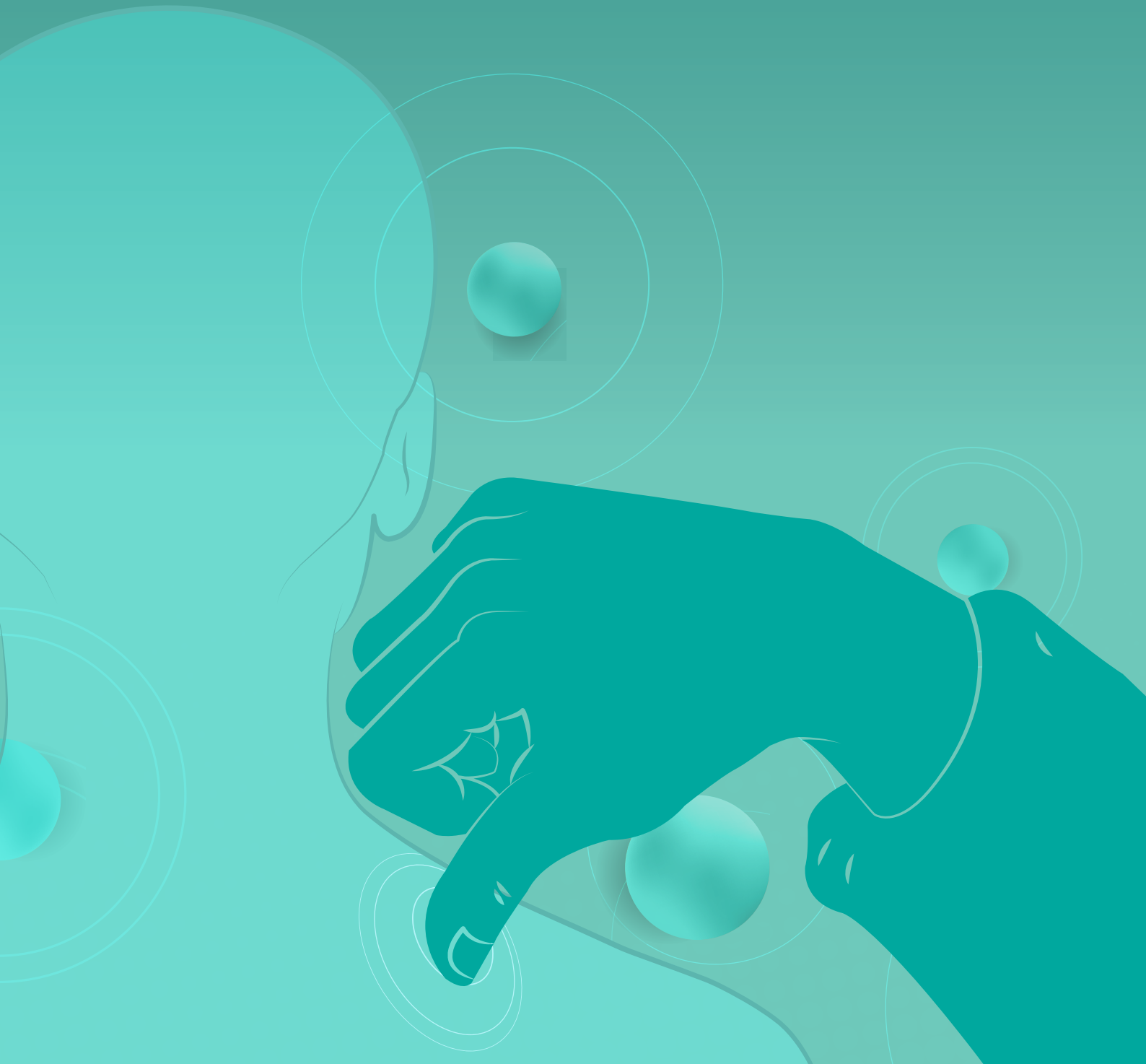


WHO BENCHMARKS FOR **THE PRACTICE** OF TUINA



WHO BENCHMARKS FOR THE PRACTICE OF TUINA



WHO benchmarks for the practice of tuina
ISBN 978-92-4-001690-3 (electronic version)
ISBN 978-92-4-001691-0 (print version)

© World Health Organization 2020

Some rights reserved. This work is available under the Creative Commons Attribution-NonCommercial-ShareAlike 3.0 IGO licence (CC BY-NC-SA 3.0 IGO; <https://creativecommons.org/licenses/by-nc-sa/3.0/igo>).

Under the terms of this licence, you may copy, redistribute and adapt the work for non-commercial purposes, provided the work is appropriately cited, as indicated below. In any use of this work, there should be no suggestion that WHO endorses any specific organization, products or services. The use of the WHO logo is not permitted. If you adapt the work, then you must license your work under the same or equivalent Creative Commons licence. If you create a translation of this work, you should add the following disclaimer along with the suggested citation: "This translation was not created by the World Health Organization (WHO). WHO is not responsible for the content or accuracy of this translation. The original English edition shall be the binding and authentic edition".

Any mediation relating to disputes arising under the licence shall be conducted in accordance with the mediation rules of the World Intellectual Property Organization (<http://www.wipo.int/amc/en/mediation/rules/>).

Suggested citation. WHO benchmarks for the practice of tuina. Geneva: World Health Organization; 2020. Licence: CC BY-NC-SA 3.0 IGO.

Cataloguing-in-Publication (CIP) data. CIP data are available at <http://apps.who.int/iris>.

Sales, rights and licensing. To purchase WHO publications, see <http://apps.who.int/bookorders>. To submit requests for commercial use and queries on rights and licensing, see <http://www.who.int/about/licensing>.

Third-party materials. If you wish to reuse material from this work that is attributed to a third party, such as tables, figures or images, it is your responsibility to determine whether permission is needed for that reuse and to obtain permission from the copyright holder. The risk of claims resulting from infringement of any third-party-owned component in the work rests solely with the user.

General disclaimers. The designations employed and the presentation of the material in this publication do not imply the expression of any opinion whatsoever on the part of WHO concerning the legal status of any country, territory, city or area or of its authorities, or concerning the delimitation of its frontiers or boundaries. Dotted and dashed lines on maps represent approximate border lines for which there may not yet be full agreement.

The mention of specific companies or of certain manufacturers' products does not imply that they are endorsed or recommended by WHO in preference to others of a similar nature that are not mentioned. Errors and omissions excepted, the names of proprietary products are distinguished by initial capital letters.

All reasonable precautions have been taken by WHO to verify the information contained in this publication. However, the published material is being distributed without warranty of any kind, either expressed or implied. The responsibility for the interpretation and use of the material lies with the reader. In no event shall WHO be liable for damages arising from its use.

Design and layout by Inis Communication

Contents

Foreword	iv
Preface	v
Acknowledgements	vi
Glossary	vii
Executive summary	viii
1. Introduction	1
2. Procedures	3
2.1 Preparation	3
2.2 Manipulations	3
2.3 Records	5
3. Facilities	7
3.1 Physical space	7
3.2 Equipment and devices	7
3.3 Waste management	7
4. Safety	9
4.1 Precautions	9
4.2 Contraindications	9
4.3 Infection prevention and control	10
4.4 Incident management	10
References	11
Annex 1. Disinfection requirements during tuina treatment	13
Annex 2. Protocol for incident management during tuina treatment	14
Annex 3. First working group meeting	16
Annex 4. Second working group meeting	18

Foreword

The World Health Organization (WHO) is currently implementing its 13th General Programme of Work (GPW13) to support countries in reaching all health-related Sustainable Development Goals (SDGs). GPW13 is structured around three interconnected strategic priorities: achieving universal health coverage; addressing health emergencies; and promoting healthier populations. These strategic priorities are supported by three strategic shifts: stepping up leadership; driving public health impacts in every country; and focusing global public goods on impact.

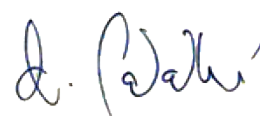
Traditional medicine has always had a role in this collective endeavour. The Declaration of Astana, renewed from the Declaration of Alma-Ata towards universal health coverage and the SDGs, reaffirms the role of traditional medicine in strengthening primary health care, a cornerstone of health systems, in pursuit of health for all. This has also been reflected in the *WHO global report on traditional and complementary medicine 2019*, in which 88% of WHO Member States acknowledge the use of traditional and complementary medicine in health care.

Taking note of the growing importance of traditional medicine in the provision of health care nationally and globally, WHO and its Member States have strived to explore ways to integrate, as appropriate, safe and evidence-based traditional and complementary medicine services within national or subnational health systems, as committed to in the Political Declaration of the High-level Meeting on Universal Health Coverage.

WHO aims to provide policy and technical guidance to Member States; promote the safe and effective use of traditional and complementary medicine through appropriate regulation of products, practices and practitioners; and support Member States in harnessing the contribution of traditional and complementary medicine to people-centred health care in implementing the *WHO Traditional Medicine Strategy 2014–2023*.

Setting norms and standards is a unique function of WHO. The normative work is driven by needs and could be translated into real impact in relevant countries through appropriate policy options. This series of benchmarks, covering various systems and interventions of traditional, complementary and integrative medicine, aims to provide a reference point to which actual practice and practitioners can be evaluated.

I am very pleased to introduce this series to policy-makers, health workers and the general public, and I firmly believe it will serve its purpose.



Zsuzsanna Jakab
Deputy Director-General
World Health Organization

Preface

Integrated health services are essential for the World Health Organization (WHO) in the implementation of its 13th General Programme of Work, which aims to support countries in achieving universal health coverage and the health-related Sustainable Development Goals. The overarching mission for the Department of Integrated Health Services is to accelerate equitable access to quality health services that are integrated and people-centred, and that can be monitored and evaluated.

WHO is unique in its mandate to provide independent normative guidance. Its normative products encompass a wide range of global public health goods, including norms and standards. It is therefore the primary role of the Department of Integrated Health Services to generate and produce relevant global goods. Key to improving its work in this area is ensuring global public health goods are driven by country needs and can deliver tangible impacts at the country level.

As of 2018, when 88% of WHO Member States acknowledged the use of traditional and complementary medicine, WHO's support in evaluating the safety, quality and effectiveness of traditional and complementary medicine has continuously ranked in the top areas of need, according to the *WHO global report on traditional and complementary medicine 2019*.

WHO prioritizes normative products based on an assessment of demands. To address increasing needs and to drive impact in countries, this series of benchmarks captures the main systems and interventions of traditional, complementary and integrative medicine by setting up required norms and standards on training and practice.

WHO's guiding principles and quality assurance procedures have been strictly followed in designing and formulating these benchmarks. WHO will not only assess the quality of these normative products but also streamline systems and plans for monitoring and evaluation.

I am pleased to present this series of benchmarks and invite you to join us in measuring and documenting their impact.

A handwritten signature in blue ink, reading "Edward Kelley". The signature is fluid and cursive, with a large, stylized 'E' and 'K'.

Edward Kelley

Director
Department of Integrated Health Services
World Health Organization

Acknowledgements

The World Health Organization (WHO) acknowledges the financial support of the National Administration of Traditional Chinese Medicine, China, without which the production of this document would not have been possible.

Thanks are due to Changchun University of Chinese Medicine, China, the World Federation of Chinese Medicine Societies, and the China Association of Acupuncture-Moxibustion, which kindly provided logistic support to the WHO working group meetings on this document.

Special thanks go to Zhihong Wang, Mingjun Liu, Bruce Bentley and Nicola Robinson, who have actively and diligently contributed to the drafting and editing of this document. WHO is indebted to all experts who have provided their inputs to the WHO working group meetings and the peer review process.

Qi Zhang and Qin Liu undertook revision work under the guidance of Edward Kelley. Colleagues within the WHO headquarters team for traditional, complementary and integrative medicine provided secretarial support.

预览已结束，完整报告链接和二维码如下：

https://www.yunbaogao.cn/report/index/report?reportId=5_23893

