



Mekong Malaria Elimination Programme Epidemiology summary

Volume 10, April to June 2020



Overview (April - June 2020)

From April to June 2020, Greater Mekong Subregion (GMS) countries reported 18 276 malaria cases, representing a 30% decrease compared to the same time period in 2019.

Cambodia

The country reported 2286 cases, a 70% decrease compared to the same time period in 2019. Cases are mostly in the north-eastern and south-western regions of Cambodia, along the forested border areas with Viet Nam, Lao PDR and Thailand.

China

The country reported no indigenous cases.

Lao People's Democratic Republic (PDR)

The country reported 394 cases, a 76% decrease compared to the same time period in 2019. Most cases are in the five southern provinces.

Myanmar

The country reported 13 656 cases, a 1% decrease compared to the same time period in 2019. Most cases are in the border states/region to Thailand, India, and Bangladesh.

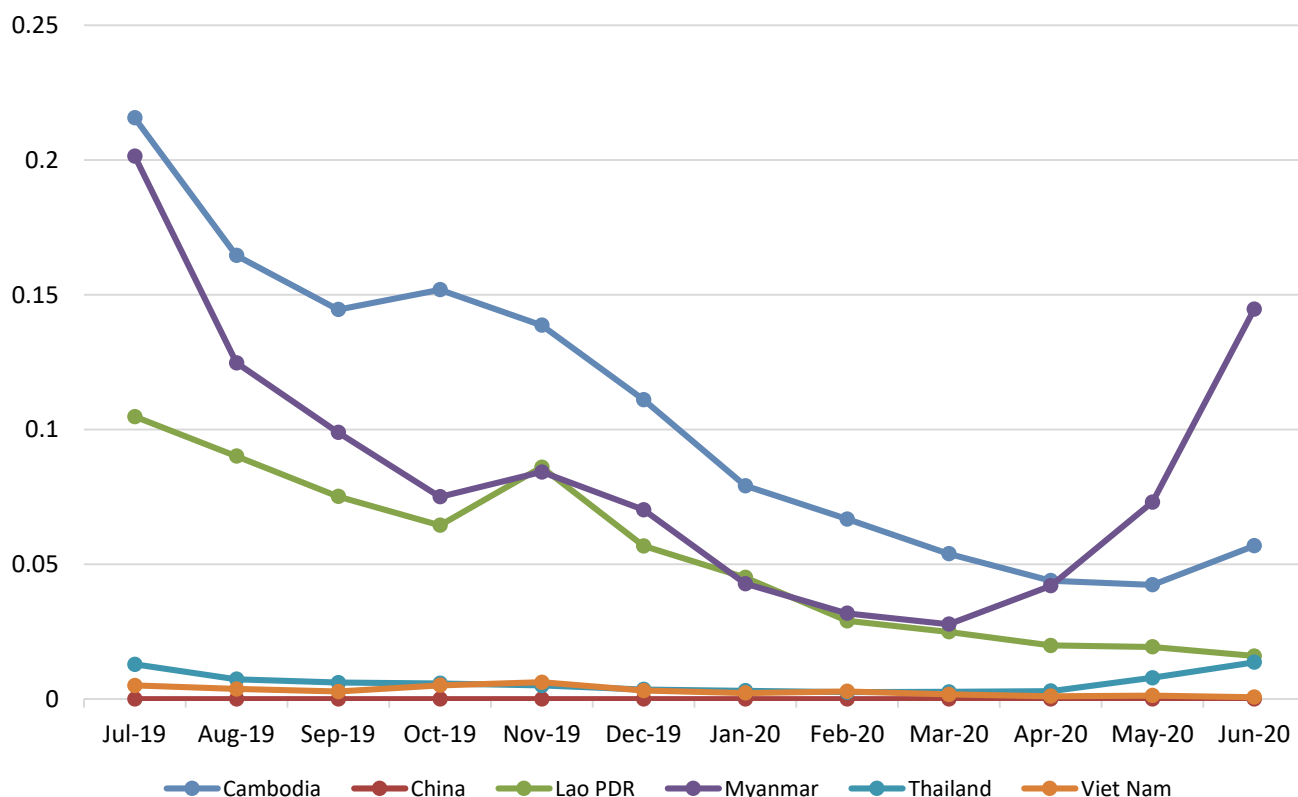
Thailand

The country reported 1636 cases, a 16% decrease compared to the same time period in 2019. Most cases are in the border provinces to Malaysia, Myanmar and Cambodia.

Viet Nam

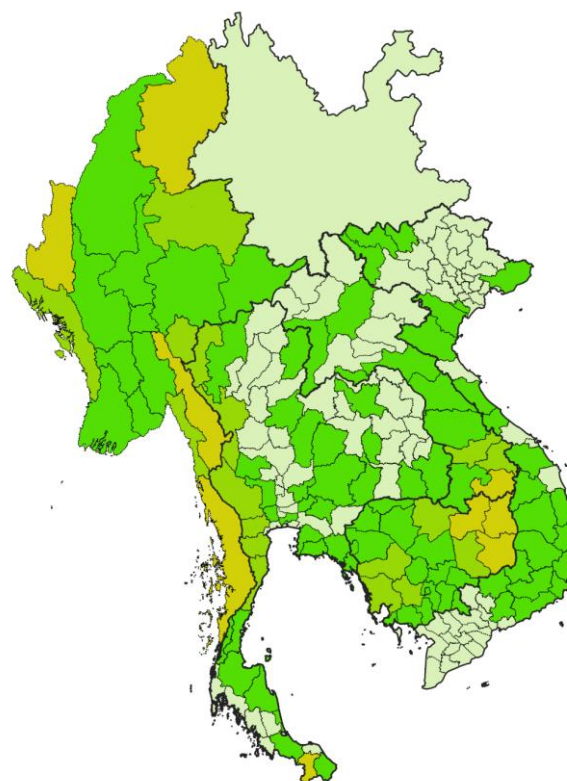
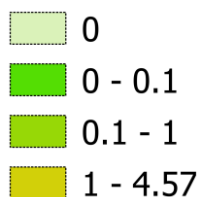
The country reported 304 cases, a 70% decrease compared to the same time period in 2019. Most cases are indigenous and located in the border provinces to Cambodia.

Monthly malaria incidence in the GMS (last 12 months)*



*Incidence is calculated as the number of reported cases per month per 1000 population.

Incidence per
1000 population



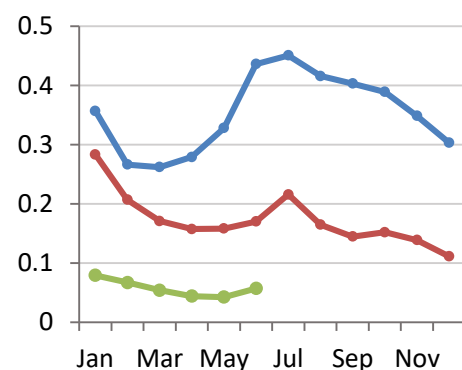
The boundaries and names shown and the designations used on this map do not imply the expression of any opinion whatsoever on the part of the World Health Organization concerning the legal status of any country, territory, city or area or of its authorities, or concerning the delimitation of its frontiers or boundaries. Dotted and dashed lines on maps represent approximate border lines for which there may not yet be full agreement.

*Incidence is calculated as the number of reported cases from April to June 2020 per 1000 population.

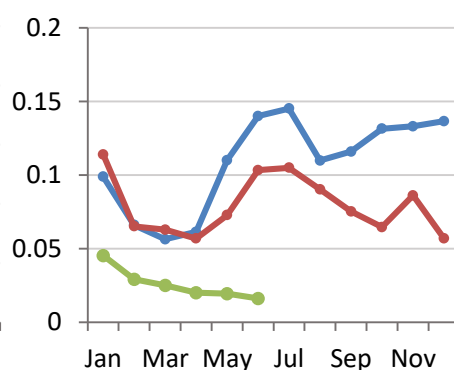
Monthly malaria incidence by country* (2018–2020)

—●— 2018 —●— 2019 —●— 2020

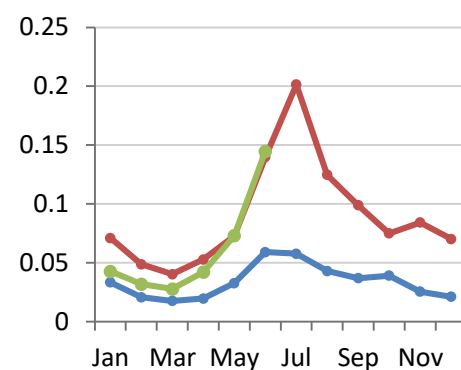
Cambodia



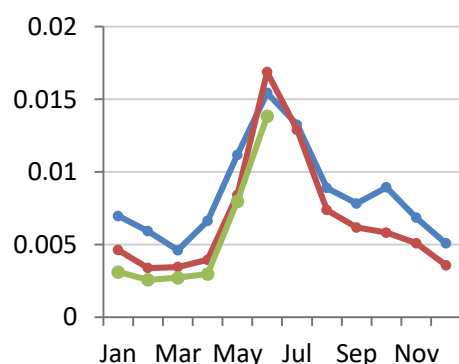
Lao PDR



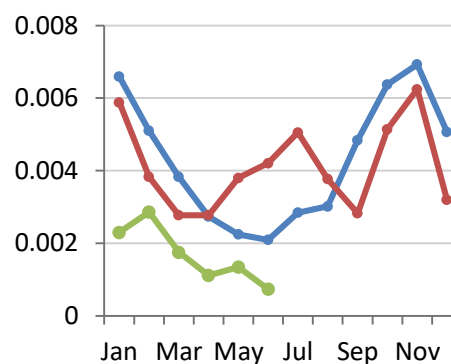
Myanmar



Thailand



Viet Nam



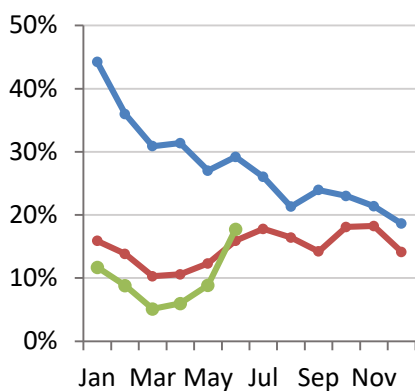
*Incidence is calculated as the number of reported cases per month per 1000 population.

*Myanmar data in 2018 is only from NMCP and Implementing Partner data is not included.

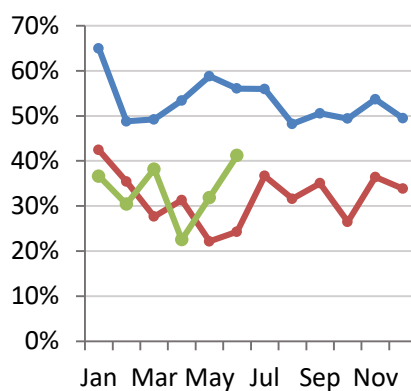
Percentage of *P. falciparum* cases by month by country* (2018–2020)

— 2018 — 2019 — 2020

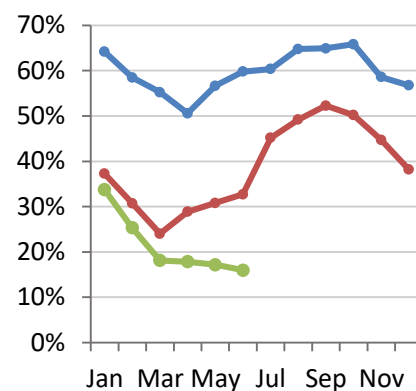
Cambodia



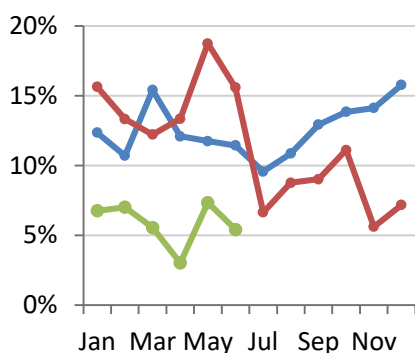
Lao PDR



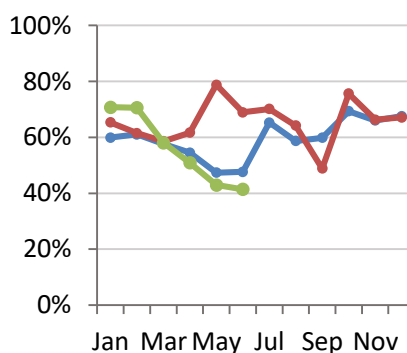
Myanmar



Thailand



Viet Nam

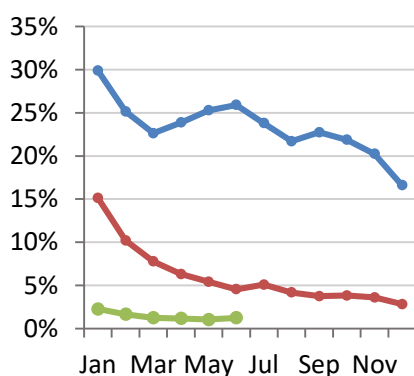


*Percentage of *P. falciparum* cases is calculated as number of confirmed cases due to *P. falciparum* divided by total confirmed cases per month per country.

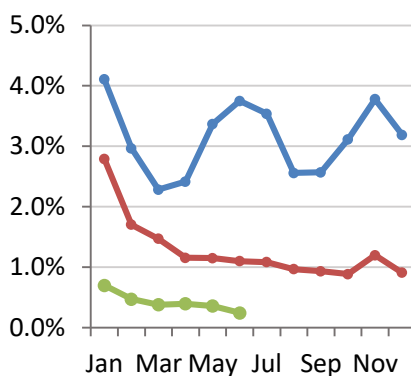
Monthly test positivity rate (TPR) by country* (2018–2020)

— 2018 — 2019 — 2020

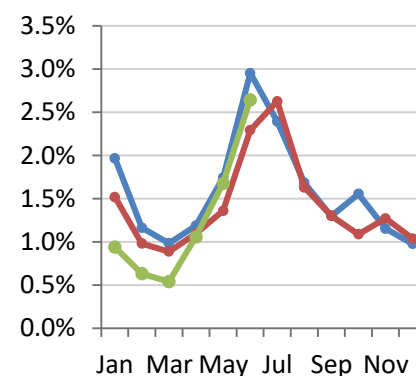
Cambodia



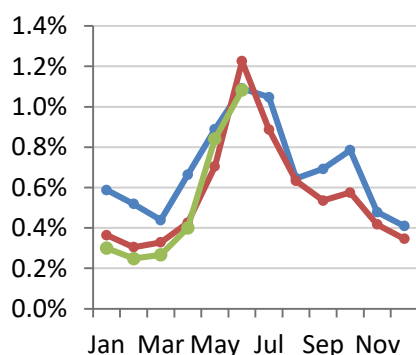
Lao PDR



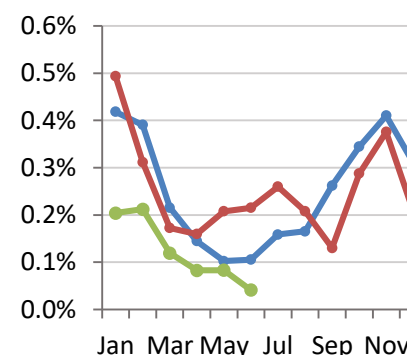
Myanmar



Thailand



Viet Nam



*TPR is calculated as number of confirmed cases divided by number of tested cases (including rapid diagnostic tests and microscopy) per month per country.

*Myanmar data in 2018 is only from NMCP and Implementing Partner data is not included.

Monthly malaria cases and deaths by country in 2019 (January–December)

Country	Surveillance indicator ¹	Jan	Feb	Mar	Apr	May	Jun	Jul	Aug	Sep	Oct	Nov	Dec	Total
Cambodia ²	Deaths	0	0	0	0	0	0	0	0	0	0	0	0	0
	Suspected cases tested	29441	31858	34521	39090	45834	58583	66612	61839	60341	62331	60416	61893	612759
	Confirmed cases	4450	3251	2683	2471	2484	2670	3390	2587	2272	2387	2180	1746	32571
	<i>P. falciparum</i> cases	707	450	276	262	306	425	603	425	323	432	398	247	4854
	<i>P. vivax</i> cases	3682	2746	2370	2183	2132	2190	2742	2121	1915	1908	1761	1482	27232
	Mixed cases	61	55	37	26	46	55	45	41	34	47	21	17	485
	Other cases	0	0	0	0	0	0	0	0	0	0	0	0	0
China ³	Deaths	0	0	0	0	0	0	0	0	0	0	0	0	0
	Suspected cases tested	11259	9049	10114	9473	12069	13444	14396	14124	13452	11965	10124	8123	137592
	Confirmed cases	13	4	4	10	10	18	34	10	7	2	34	11	157
	<i>P. falciparum</i> cases	0	0	0	1	1	0	0	0	0	0	1	0	3
	<i>P. vivax</i> cases	13	4	4	9	9	18	34	10	7	2	33	11	154
	Mixed cases	0	0	0	0	0	0	0	0	0	0	0	0	0
	Other cases	0	0	0	0	0	0	0	0	0	0	0	0	0
Lao PDR	Deaths	0	0	0	0	0	0	0	0	0	0	0	0	0
	Suspected cases tested	28642	26831	30010	34554	44389	65934	67952	65490	56623	51310	50500	43957	566192
	Confirmed cases	799	457	441	399	510	725	736	633	528	453	604	399	6684
	<i>P. falciparum</i> cases	339	162	122	125	113	176	270	200	185	120	220	135	2167
	<i>P. vivax</i> cases	473	268	279	267	377	547	465	452	332	335	385	258	4438
	Mixed cases	16	1	4	5	1	5	14	13	9	6	1	4	79
	Other cases	0	0	0	0	0	0	0	0	0	0	0	0	0
Myanmar	Deaths	3	0	0	0	1	1	3	3	1	0	2	0	14
	Suspected cases tested	244081	260242	237770	252419	280012	318389	368911	378233	379176	327375	322087	340927	3709622
	Confirmed cases	3709	2549	2107	2761	3805	7296	10518	6513	5167	3918	4401	3667	56411
	<i>P. falciparum</i> cases	1382	783	506	797	1172	2386	4751	3204	2701	1967	1968	1400	23017
	<i>P. vivax</i> cases	2275	1716	1573	1939	2601	4846	5663	3212	2408	1910	2411	2234	32788
	Mixed cases	52	50	28	25	32	64	104	97	58	41	22	33	606
	Other cases	0	0	0	0	0	0	0	0	0	0	0	0	0
Thailand	Deaths	Data not available ⁴												13
	Suspected cases tested	84317	73778	69611	61620	79543	91539	96568	77443	76518	67267	81017	68452	927673
	Confirmed cases	307	225	229	262	560	1122	857	490	410	387	338	237	5424
	<i>P. falciparum</i> cases	48	30	28	35	105	175	57	43	37	43	19	17	637
	<i>P. vivax</i> cases	245	184	185	212	431	914	762	428	361	337	307	208	4574
	Mixed cases	1	4	2	1	7	7	8	6	0	0	0	1	37
	Other cases	13	7	14	14	17	26	30	13	12	7	12	11	176
Viet Nam	Deaths	0	0	0	0	0	0	0	0	0	0	0	0	0
	Suspected cases tested	112120	115769	151159	163426	172384	183940	183215	170791	204354	168318	156510	145567	1927553
	Confirmed cases	554	361	261	261	358	396	476	355	266	484	588	301	4661
	<i>P. falciparum</i> cases	362	222	153	161	282	273	334	228	130	366	390	202	3103
	<i>P. vivax</i> cases	188	135	106	99	71	123	138	124	134	118	190	93	1519
	Mixed cases	3	3	2	1	5	0	2	2	2	0	5	5	30
	Other cases	1	1	0	0	0	0	2	1	0	0	3	1	9

¹ Mixed cases include cases identified with more than one *Plasmodium* species. Other cases refer to *P. malariae*, *P. ovale*, *P. knowlesi* and unknown. Data in the

预览已结束，完整报告链接和二维码如下：

https://www.yunbaogao.cn/report/index/report?reportId=5_24505

