

EBOLA VIRUS DISEASE

Democratic Republic of the Congo



External Situation Report 98



World Health
Organization
REGIONAL OFFICE FOR
Africa

EBOLA VIRUS DISEASE

Democratic Republic of the Congo

External Situation Report 98



Date of issue: 23 June 2020

Data as reported by: 21 June 2020

Situation update

Cases



3470

Deaths



2280

In Ituri, North Kivu and South Kivu provinces of the Democratic Republic of the Congo, no new confirmed cases of EVD have been reported since 27 April 2020.

As part of ongoing epidemiological data confirmation exercise, seven historic probable cases were validated by the Ministry of Health in the past week with onset dates reported between March 2019 and November 2019. Six of these seven probable cases were reported in North Kivu province across three different health zones; three in Kalunguta, two in Manguredijipa and one in Mabalako. The seventh probable case was reported in Ituri province in the Mambasa health zone. The ages of these seven probable cases ranged from 1.5 months to 60 years.

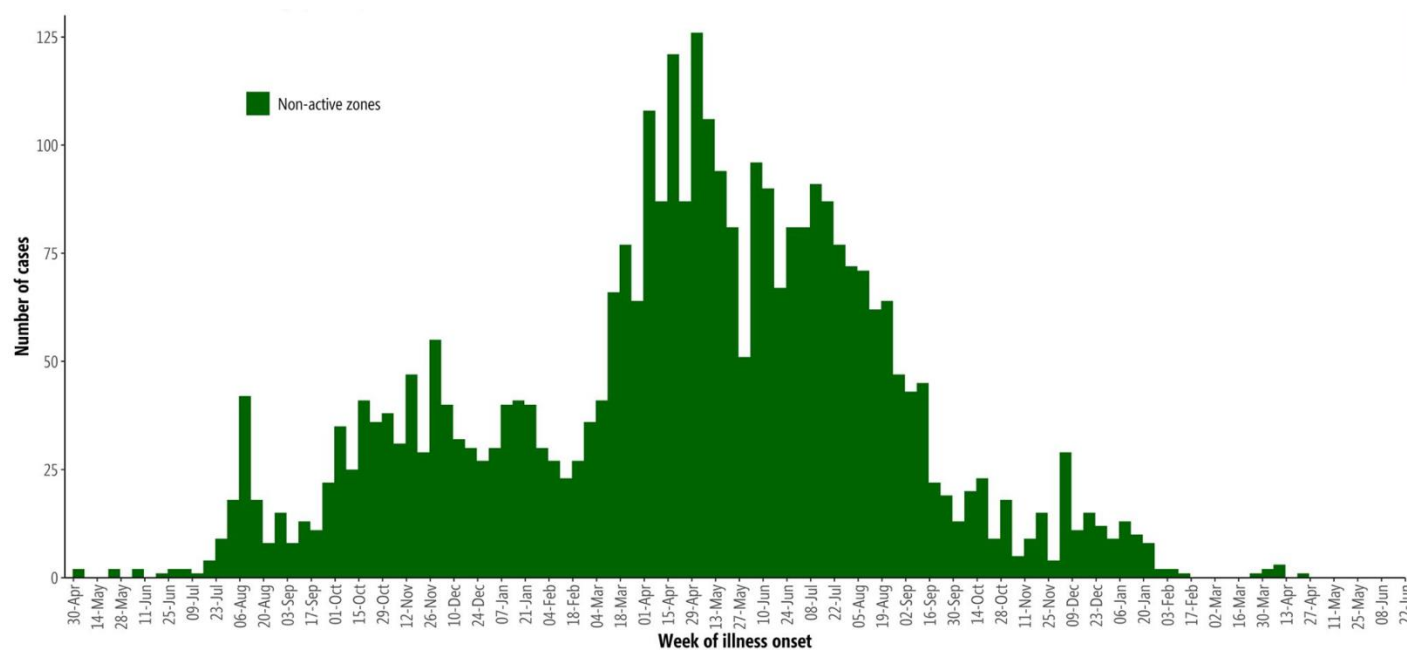
From 14 to 21 June 2020, an average of 2871 alerts were reported and investigated each day. Of these, an average of 331 alerts were validated as suspected cases each day, requiring specialized care and laboratory testing to rule out EVD. In the past week, a high level of reported alerts has been sustained throughout active sub-coordinations. Timely testing of suspected cases continues to be provided from eight laboratories. From 15 to 21 June 2020, 3332 samples were tested, including 2665 blood samples from alive, suspected cases; 323 swabs from community deaths; and 344 from re-tested patients. None of them tested positive. The number of samples tested by the laboratories increased by 4% compared to the previous week.

As of 21 June 2020, a total of 3470 EVD cases, including 3317 confirmed and 153 probable cases have been reported, of which 2287 cases died (overall case fatality ratio 66%), and 1171 have recovered. Of the total confirmed and probable cases, 57% ($n=1970$) were female, 29% ($n=1002$) were children aged less than 18 years, and 5% ($n=171$) were healthcare workers.

Handover of the coordination of the response activities to the Provincial Health Division of North Kivu Province, which started on 1 June 2020, is ongoing.

For information about the EVD outbreak in Équateur Province see the [WHO Regional Office for Africa Weekly Bulletins on Outbreaks and Other Emergencies](#).

Figure 1: Health zone of reported Ebola virus disease cases by week of illness onset, as of 21 June 2020



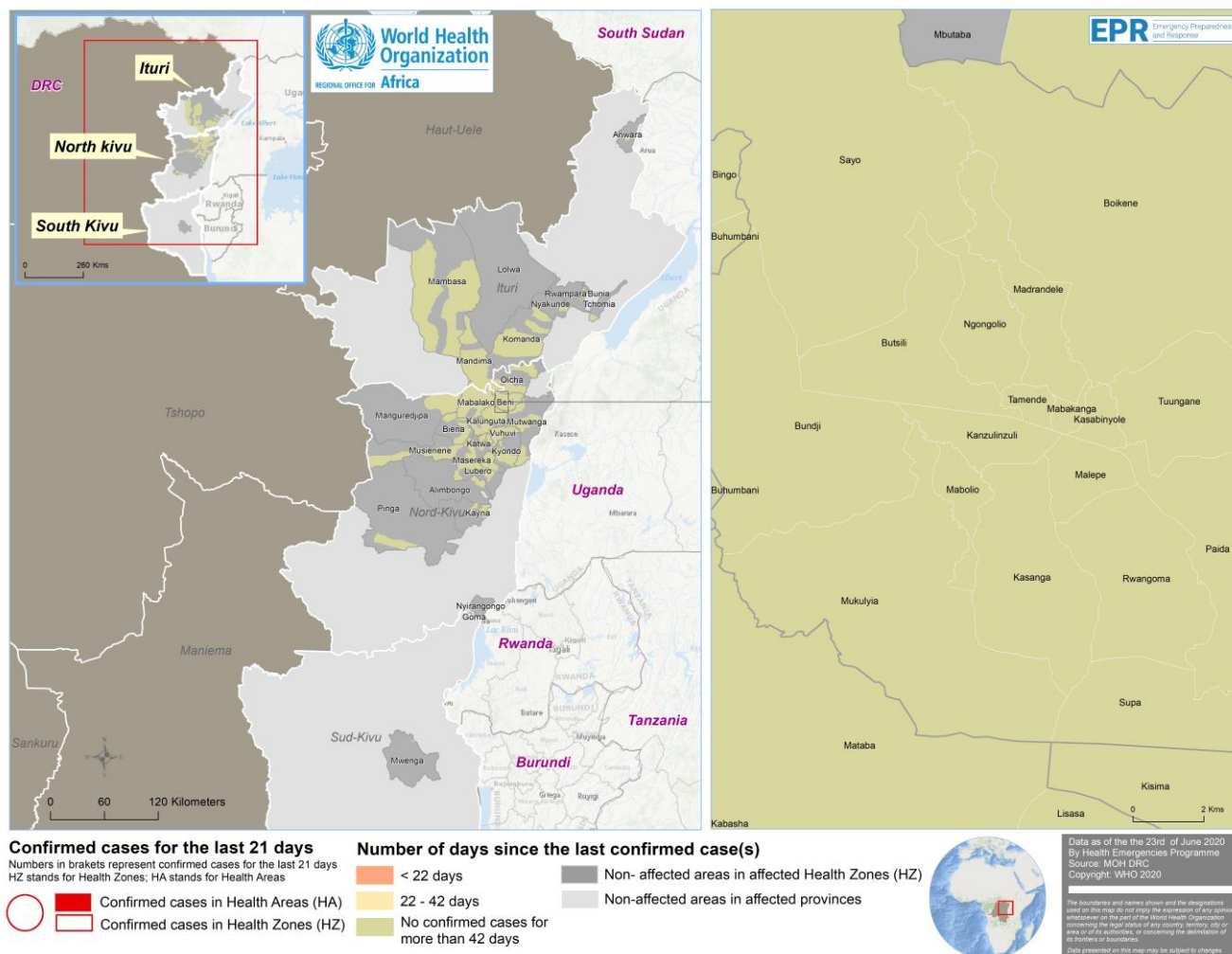
**Excludes n=71/3470 cases for whom onset dates not reported. Data in recent weeks are subject to delays in case confirmation and reporting, as well as ongoing data cleaning.*

Table 1: Ebola virus disease cases by classification and health zones in North Kivu, South Kivu, and Ituri provinces, Democratic Republic of the Congo, as of as of 21 June 2020

Province	Health Zone	Health areas reporting at least one case in previous 21 days / total number of health areas	Confirmed cases in the last 21 days	Cumulative cases by classification			Cumulative deaths	
				Confirmed cases	Probable cases	Total cases	Deaths among confirmed cases	Total deaths
South Kivu	Mwenga	0/18	0	6	0	6	3	3
North Kivu	Alimbongo	0/20	0	5	1	6	2	3
	Beni	0/18	0	728	9	737	469	478
	Biena	0/16	0	19	2	21	12	14
	Butembo	0/15	0	295	7	302	353	360
	Goma	0/10	0	1	0	1	1	1
	Kalunguta	0/18	0	198	26	224	71	97
	Katwa	0/18	0	652	24	676	471	495
	Kayna	0/21	0	28	1	29	8	9
	Kyondo	0/22	0	25	6	31	15	21
	Lubero	0/19	0	32	2	34	4	6
	Mabalako	0/12	0	463	20	483	334	354
	Manguredjipa	0/10	0	18	5	23	12	17
	Masereka	0/16	0	50	6	56	17	23
	Musienene	0/20	0	85	1	86	33	34
	Mutwanga	0/19	0	32	0	32	12	12
	Nyiragongo	0/10	0	3	0	3	1	1
	Oicha	0/26	0	65	0	65	30	30
	Pinga	0/18	0	1	0	1	0	0
	Vuhovi	0/12	0	103	14	117	37	51
Ituri	Ariwara	0/21	0	1	0	1	1	1
	Bunia	0/20	0	4	0	4	4	4
	Komanda	0/15	0	56	10	66	44	54
	Lolwa	0/8	0	6	0	6	1	1
	Mambasa	0/17	0	82	6	88	27	33
	Mandima	0/15	0	347	12	359	166	178
	Nyakunde	0/12	0	2	0	2	1	1
	Rwampara	0/13	0	8	1	9	3	4
	Tchomia	0/12	0	2	0	2	2	2
Total		0/471	0	3317	153	3470	2134	2287

Note: Attributions of cases notified in recent days to a health zone are subject to changes upon in-depth investigations

Figure 3: Geographical distribution of confirmed and probable Ebola virus disease cases by health area, North Kivu and Ituri provinces, Democratic Republic of the Congo, 21 June 2020



2. Actions to date

The Government and the Ministry of Health (MoH) and other national authorities in the Democratic Republic of the Congo, WHO, and partners are implementing outbreak control interventions together with teams in the surrounding provinces, who are taking measures to ensure that they are response-ready.

An overview of key activities is summarized below:

Surveillance and Laboratory

- From 15 to 21 June 2020, 3332 samples were tested, including 2665 blood samples from alive, suspected cases; 323 swabs from community deaths; and 344 from re-tested patients. None of them tested positive. The number of samples tested by the laboratories increased by 4% compared to the previous week.
- Over 250 000 contacts of cases reported in Ituri, North Kivu and South Kivu provinces were registered during this outbreak.

Vaccines

- The summary of rVSV-ZEBOV-GP vaccination data shows that between 8 August 2018 and 20 May 2020, 305 841 people were identified as eligible for vaccination; 99.4% (n=303 905) of them were vaccinated.
- In addition, vaccination activities using Ad26-ZEBOV/MVA-BN-FILO were carried out in the health areas of Majengo and Kahembe, Karisimbi Health Zone in North Kivu Province. Between 14 October 2019 and 10 April 2020, 20 339 people received the first dose of this vaccine, and 9 560 of them received the second dose.

Case management

- Ebola treatment centres (ETCs), transit centres (TCs) and decentralized transit centres continue to operate across outbreak affected areas, providing timely care and diagnoses for suspected EVD cases.

预览已结束，完整报告链接和二维码如下：

https://www.yunbaogao.cn/report/index/report?reportId=5_24518

