

EBOLA VIRUS DISEASE

Democratic Republic of the Congo



External Situation Report 96



World Health
Organization
REGIONAL OFFICE FOR Africa

EBOLA VIRUS DISEASE

Democratic Republic of the Congo

External Situation Report 96



Date of issue: 9 June 2020

Data as reported by: 8 June 2020

Situation update

Equateur Province

Cases



Deaths



Situation update

North Kivu, South Kivu, Ituri Provinces

Cases



Deaths



The Ebola virus disease (EVD) outbreak in Equateur Province, Democratic Republic of the Congo, continues since its declaration on 1 June 2020 by the Ministry of Health. Since our last situation report on 2 June 2020 ([External Situation report 95](#)), four additional confirmed EVD cases and four deaths have been reported. As of 8 June 2020, a total of 12 EVD cases (9 confirmed and 3 probable), including eight deaths (case fatality ratio 66.7%), have been reported from six health areas in three health zones. Of the eight deaths, four occurred in the community. The case fatality ratio among confirmed cases is 55.6% (5 deaths/9 confirmed cases). Two health workers are among the confirmed cases since the start of the outbreak, 18.2% of all cases. Of the four confirmed cases still alive, two are under treatment in the Ebola treatment centre and two are in the community.

The health zones reporting EVD cases are Mbandaka (6 confirmed, 3 probable, 3 deaths), Wangata (2 confirmed, 1 deaths) and Bikoro (1 confirmed and 1 death).

Sequencing of the initial confirmed specimen (swab) conducted at the Institute National de Recherche Biomédicale (INRB), Kinshasa, indicated the *Zaire ebolavirus* isolated in Equateur Province is not linked to the outbreak in eastern Democratic Republic of the Congo. Additional samples have been sent to the INRB for sequencing. Investigations around the origin of this outbreak are ongoing.

As of 8 June 2020, a total of 289 contacts have been identified for follow up, of which 255 (88%) were seen on the reporting day.

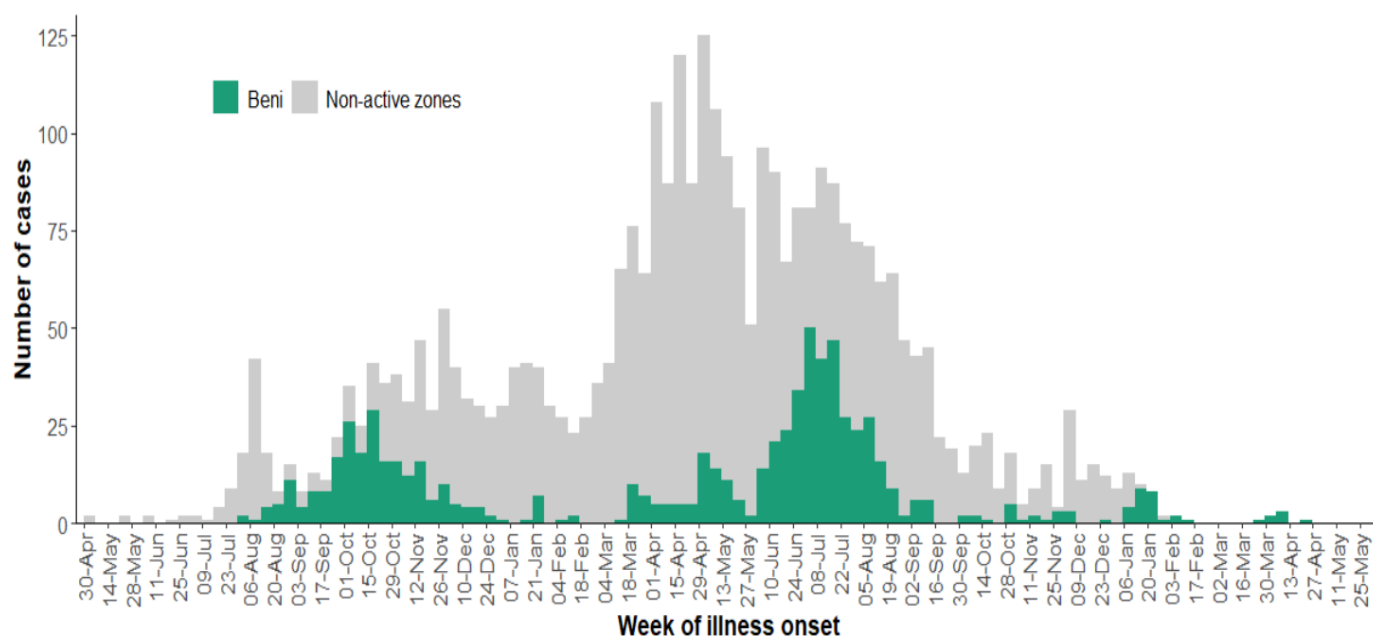
In Ituri, North Kivu and South Kivu provinces of the Democratic Republic of the Congo, no new confirmed cases of EVD have been reported from 1 to 8 June 2020. The source of infection of the cluster reported in Beni Health Zone in April 2020 remains unconfirmed.

From 1 to 8 June 2020, an average of 2938 alerts were reported and investigated per day. Of these, an average of 472 alerts were validated as suspected cases each day, requiring specialized care and

laboratory testing to rule out EVD. In the past three weeks, the alert rate has improved in Beni and Butembo sub-coordinations. Timely testing of suspected cases continues to be provided from eight laboratories. From 1 to 8 June 2020, 3130 samples were tested, including 2421 blood samples from alive, suspected cases; 331 swabs from community deaths; and 378 samples from re-tested patients. None of them tested positive. The number of samples tested by the laboratories increased by 4% compared to the previous week.

As of 8 June 2020, a total of 3463 EVD cases, including 3317 confirmed and 146 probable cases have been reported, of which 2280 cases died (overall case fatality ratio 66%), and 1171 have recovered. Of the total confirmed and probable cases, 57% ($n=1970$) were female, 29% ($n=1002$) were children aged less than 18 years, and 5% ($n=171$) were health care workers.

Figure 1: Health zone of reported Ebola virus disease cases by week of illness onset, as of 8 June 2020



*Excludes $n=68/3462$ cases for whom onset dates not reported. Data in recent weeks are subject to delays in case confirmation and reporting, as well as ongoing data cleaning.

Table 1: Ebola virus disease cases by classification and health zones in North Kivu, South Kivu, and Ituri provinces, Democratic Republic of the Congo, as of 7 June 2020

Province	Health Zone	Health areas reporting at least one case in previous 21 days / total number of health areas	Confirmed cases in the last 21 days	Cumulative cases by classification			Cumulative deaths	
				Confirmed cases	Probable cases	Total cases	Deaths among confirmed cases	Total deaths
South Kivu	Mwenga	0/18	0	6	0	6	3	3
North Kivu	Alimbongo	0/20	0	5	1	6	2	3
	Beni	0/18	0	728	9	737	469	478
	Biena	0/16	0	19	2	21	12	14
	Butembo	0/15	0	295	7	302	353	360
	Goma	0/10	0	1	0	1	1	1
	Kalunguta	0/18	0	198	23	221	71	94
	Katwa	0/18	0	652	24	676	471	495
	Kayna	0/21	0	28	1	29	8	9
	Kyondo	0/22	0	25	6	31	15	21
	Lubero	0/19	0	32	2	34	4	6
	Mabalako	0/12	0	463	19	482	334	353
	Manguredjipa	0/10	0	18	3	21	12	15
	Masereka	0/16	0	50	6	56	17	23
	Musienene	0/20	0	85	1	86	33	34
	Mutwanga	0/19	0	32	0	32	12	12
	Nyiragongo	0/10	0	3	0	3	1	1
	Oicha	0/26	0	65	0	65	30	30
	Pinga	0/18	0	1	0	1	0	0
	Vuhovi	0/12	0	103	14	117	37	51
Ituri	Ariwara	0/21	0	1	0	1	1	1
	Bunia	0/20	0	4	0	4	4	4
	Komanda	0/15	0	56	10	66	44	54
	Lolwa	0/8	0	6	0	6	1	1
	Mambasa	0/17	0	82	5	87	27	32
	Mandima	0/15	0	347	12	359	166	178
	Nyakunde	0/12	0	2	0	2	1	1
	Rwampara	0/13	0	8	1	9	3	4
	Tchomia	0/12	0	2	0	2	2	2
Total		0/471	0	3317	146	3463	2134	2280

Note: Attributions of cases notified in recent days to a health zone are subject to changes upon in-depth investigations

Figure 2: Geographical distribution of confirmed and probable Ebola virus disease cases by health area, Equateur province, Democratic Republic of the Congo, 7 June 2020

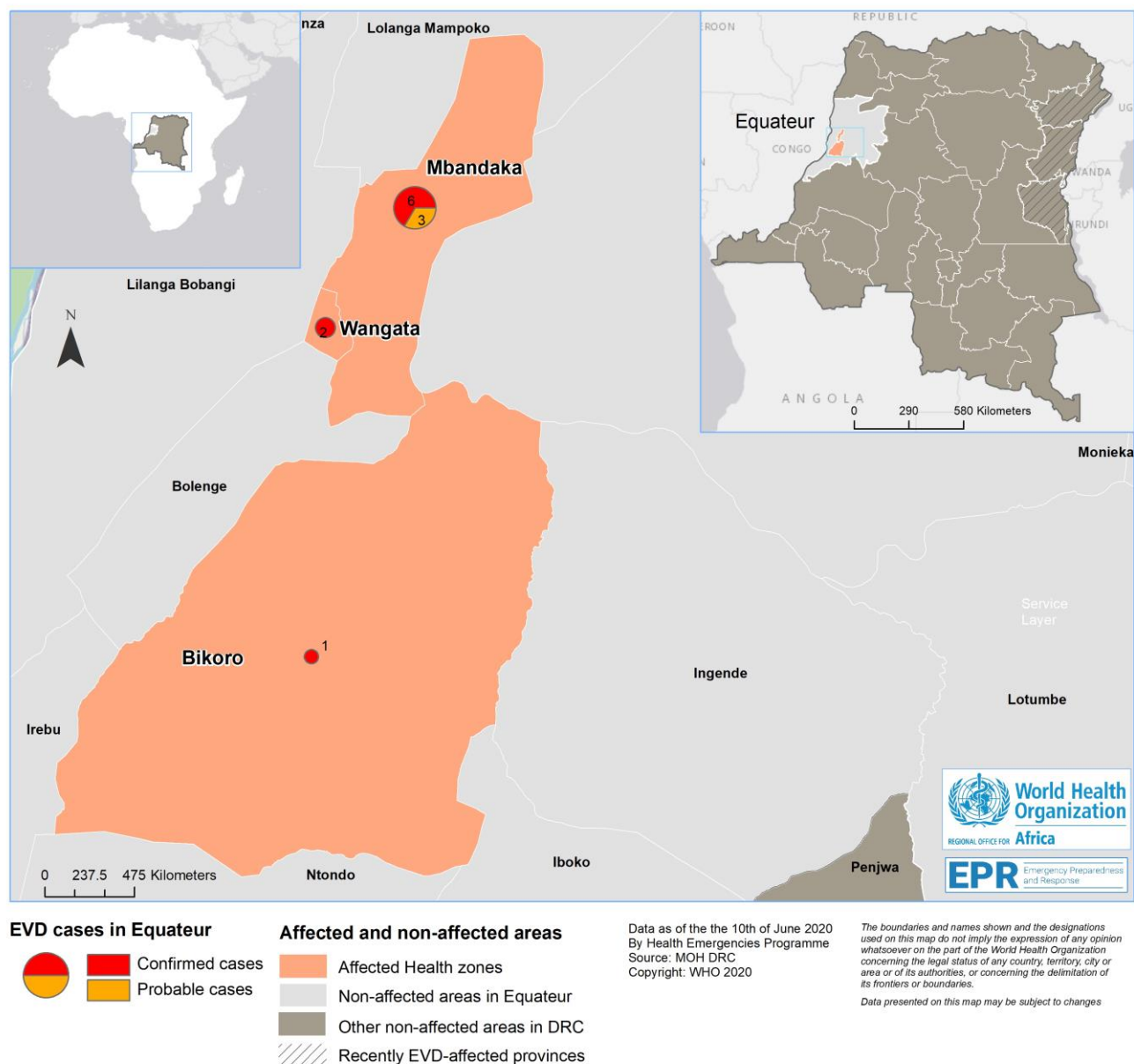
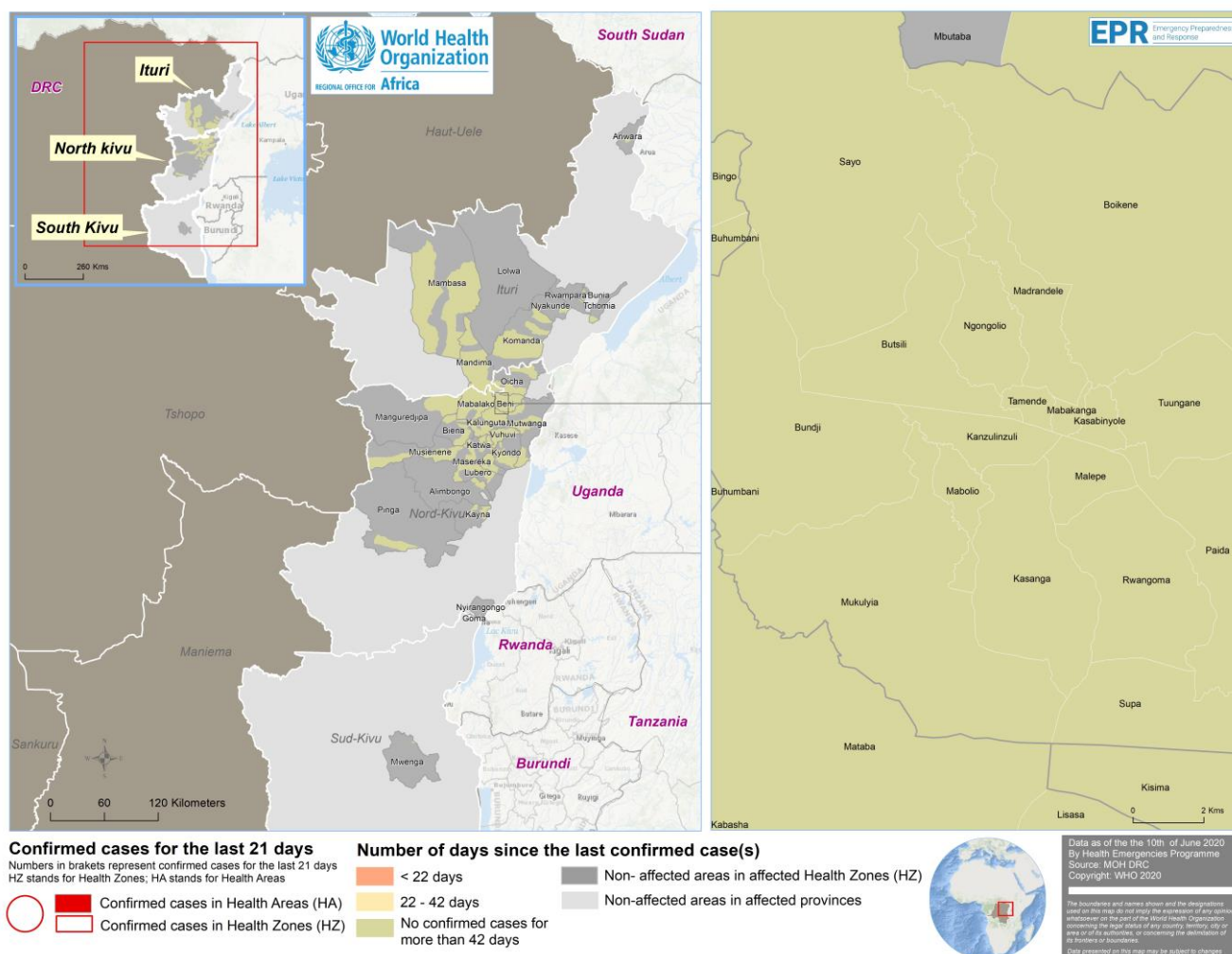


Figure 3: Geographical distribution of confirmed and probable Ebola virus disease cases by health area, North Kivu and Ituri provinces, Democratic Republic of the Congo, 7 June 2020



2. Actions to date

The Government and the Ministry of Health (MoH) and other national authorities in the Democratic Republic of the Congo, WHO, and partners are implementing outbreak control interventions together with teams in the surrounding provinces, who are taking measures to ensure that they are response-ready.

An overview of key activities is summarized below:

Surveillance and Laboratory

- From 1 to 7 June 2020, 3139 samples were tested, including 2421 blood samples from alive, suspected cases; 331 swabs from community deaths; and 378 samples from re-tested patients. The number of samples tested by the laboratories increased by 4% compared to the previous week.
- Over 250 000 contacts of cases reported in Ituri, North Kivu and South Kivu provinces have been registered since the beginning of the outbreak.

Vaccines

- The summary of rVSV-ZEBOV-GP vaccination data shows that between 8 August 2018 and 20 May 2020, 305 841 people were identified as eligible for vaccination; 99.4% (n=303 905) of them were vaccinated.
- In addition, vaccination activities using Ad26-ZEBOV/MVA-BN-FILO were carried out in the health areas of Majengo and Kahembe, Karisimbi Health Zone in North Kivu Province. Between 14 October 2019 and 10 April 2020, 20 339 people received the first dose of this vaccine, and 9 560 of them received the second.
- WHO anticipates potential longer-term challenges with the vaccine pipeline due to limited flight ability as a result of the COVID-19 pandemic.

Case management

预览已结束，完整报告链接和二维码如下：

https://www.yunbaogao.cn/report/index/report?reportId=5_24549

