

EBOLA VIRUS DISEASE

Democratic Republic of the Congo



External Situation Report 94



World Health
Organization
REGIONAL OFFICE FOR Africa

EBOLA VIRUS DISEASE

Democratic Republic of the Congo

External Situation Report 94



Date of issue: 26 May 2020

Data as reported by: 24 May 2020

1. Situation update

Cases



3463

Deaths



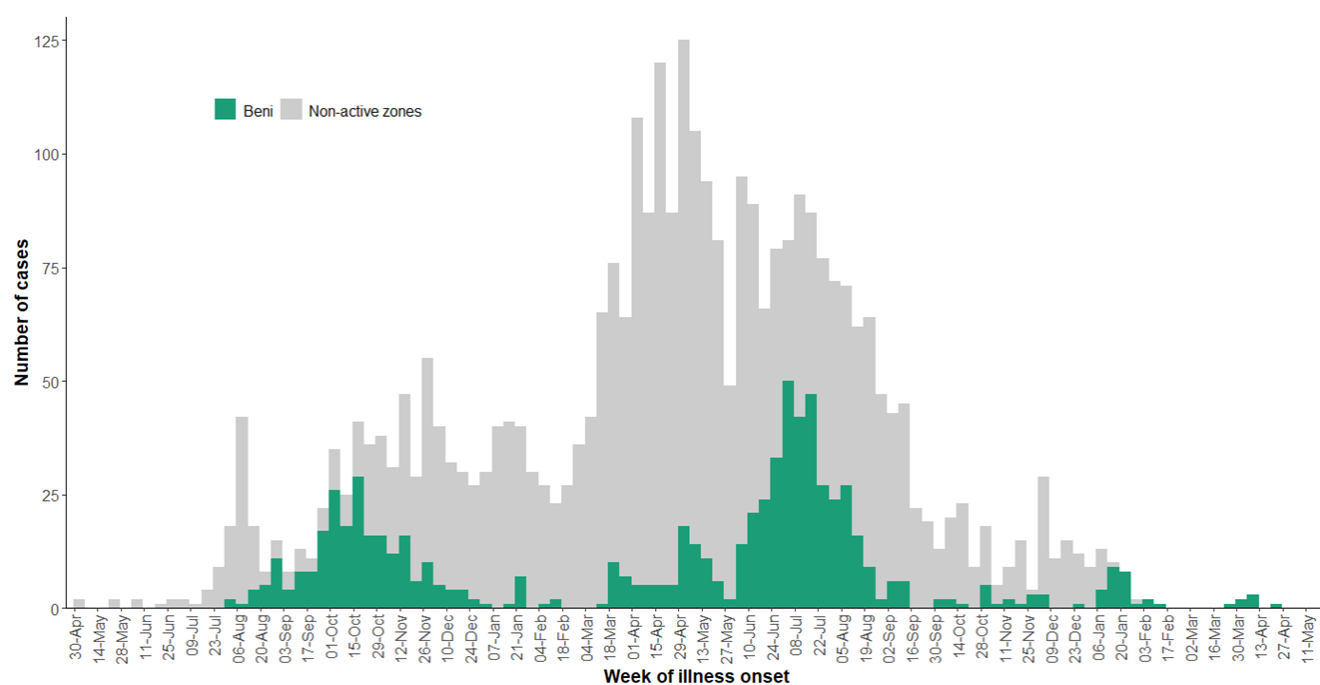
2280

From 18 to 24 May 2020, no new confirmed cases of Ebola virus disease (EVD) have been reported in the Democratic Republic of the Congo. The definitive source of infection of the cluster reported in April 2020 remains unidentified. In the last seven days, two historic probable cases were validated, from people who had onset of symptoms in March 2019 and July 2019.

From 18 to 24 May 2020, an average of 2704 alerts were reported and investigated per day. Of these, an average of 397 alerts were validated as suspected cases each day, requiring specialized care and laboratory testing to rule out EVD. In the past three weeks, the alert rate has improved notably in Beni and Butembo sub-coordinations. Timely testing of suspected cases continues to be provided from eight laboratories. From 18 to 24 May 2020, 3065 samples were tested including 2313 blood samples from alive, suspected cases; 331 swabs from community deaths; and 421 samples from re-tested patients. Overall, laboratory activities increased by 7% compared to the previous week.

As of 24 May 2020, a total of 3463 EVD cases, including 3317 confirmed and 146 probable cases have been reported, of which 2280 cases died (overall case fatality ratio 66%), and 1171 have recovered. Of the total confirmed and probable cases, 57% ($n=1970$) were female, 29% ($n=1002$) were children aged less than 18 years, and 5% ($n=171$) were healthcare workers.

Figure 1: Health zone of reported Ebola virus disease cases by week of illness onset, as of 24 May 2020



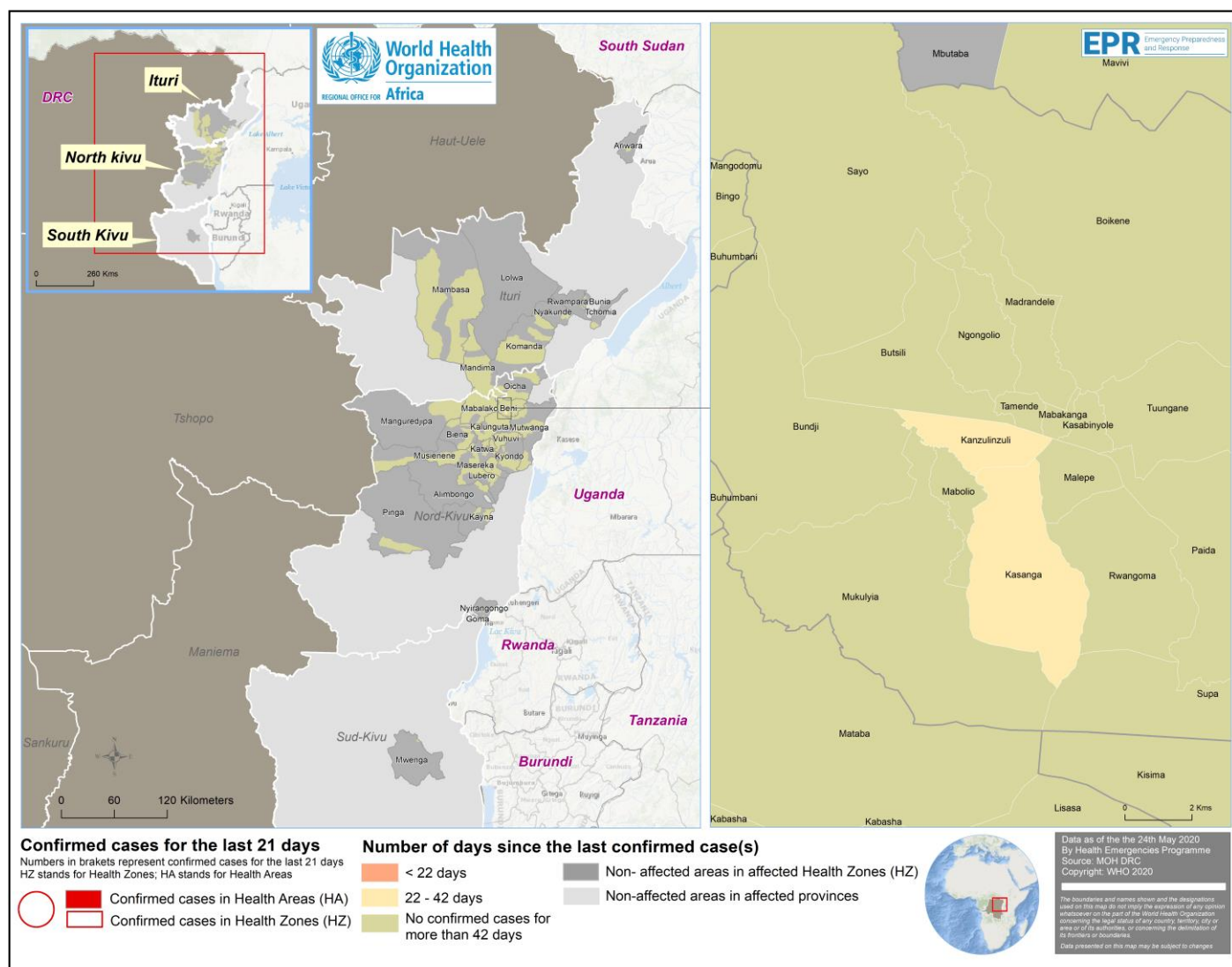
**Excludes n=74/3462 cases for whom onset dates not reported. Data in recent weeks are subject to delays in case confirmation and reporting, as well as ongoing data cleaning.*

Table 1: Ebola virus disease cases by classification and health zones in North Kivu, South Kivu, and Ituri provinces, Democratic Republic of the Congo, as of 24 May 2020

Province	Health Zone	Health areas reporting at least one case in previous 21 days / total number of health areas	Confirmed cases in the last 21 days	Cumulative cases by classification			Cumulative deaths	
				Confirmed cases	Probable cases	Total cases	Deaths among confirmed cases	Total deaths
South Kivu	Mwenga	0/18	0	6	0	6	3	3
North Kivu	Alimbongo	0/20	0	5	1	6	2	3
	Beni	0/18	0	728	9	737	469	478
	Biena	0/16	0	19	2	21	12	14
	Butembo	0/15	0	295	7	302	353	360
	Goma	0/10	0	1	0	1	1	1
	Kalunguta	0/18	0	198	23	221	71	94
	Katwa	0/18	0	652	24	676	471	495
	Kayna	0/21	0	28	1	29	8	9
	Kyondo	0/22	0	25	6	31	15	21
	Lubero	0/19	0	32	2	34	4	6
	Mabalako	0/12	0	463	19	482	334	353
	Manguredjipa	0/10	0	18	3	21	12	15
	Masereka	0/16	0	50	6	56	17	23
	Musienene	0/20	0	85	1	86	33	34
	Mutwanga	0/19	0	32	0	32	12	12
	Nyiragongo	0/10	0	3	0	3	1	1
	Oicha	0/26	0	65	0	65	30	30
	Pinga	0/18	0	1	0	1	0	0
	Vuhovi	0/12	0	103	14	117	37	51
Ituri	Ariwara	0/21	0	1	0	1	1	1
	Bunia	0/20	0	4	0	4	4	4
	Komanda	0/15	0	56	10	66	44	54
	Lolwa	0/8	0	6	0	6	1	1
	Mambasa	0/17	0	82	5	87	27	32
	Mandima	0/15	0	347	12	359	166	178
	Nyakunde	0/12	0	2	0	2	1	1
	Rwampara	0/13	0	8	1	9	3	4
	Tchomia	0/12	0	2	0	2	2	2
Total		0/471	0	3317	146	3463	2134	2280

Note: Attributions of cases notified in recent days to a health zone are subject to changes upon in-depth investigations

Figure 2: Geographical distribution of confirmed and probable Ebola virus disease cases by health area, North Kivu and Ituri provinces, Democratic Republic of the Congo, 24 May 2020



2. Actions to date

The Government and the Ministry of Health (MOH) and other national authorities in the Democratic Republic of the Congo, WHO, and partners are implementing outbreak control interventions together with teams in the surrounding provinces, who are taking measures to ensure that they are response-ready.

An overview of key activities is summarized below:

Surveillance and Laboratory

- ➔ From 18 to 24 May 2020, 3065 samples were tested including 2313 blood samples from alive, suspected cases; 331 swabs from community deaths; and 421 samples from re-tested patients. Overall, laboratory activities increased by 7% compared to the previous week.
- ➔ Over 250 000 contacts have been registered since the beginning of the outbreak.

Vaccines

- ➔ Since the resurgence of the outbreak in Beni, a total of 2129 people have been vaccinated, of which 2084 were in Beni and 45 in Karisimbi as of 24 May 2020. The total number of people now vaccinated with the rVSV-ZEBOC-GP vaccine is 303 905 since the start of the outbreak in August 2018.
- ➔ WHO anticipates potential longer-term challenges with the vaccine pipeline due to limited flight ability as a result of the COVID-19 pandemic.

Case management

- ➔ Ebola treatment centres (ETCs), transit centres (TCs) and decentralized transit centres continue to operate across outbreak affected areas, providing timely care and diagnoses for suspected EVD cases.
- ➔ As of 22 May 2020, there are 65 patients awaiting test results admitted in the ten operational transit centres and ETCs that are reporting their activities.

Infection prevention and control (IPC) and Water, Sanitation and Hygiene (WASH)

- ➔ From May 18 to 24, 2020, 88 health care facilities in the Beni, Butembo and Ituri / Bunia sub-coordinations were evaluated. The average score was 64%. By sub-coordination, the score was 17% in Beni; 64% in Butembo; and 81% in Bunia. There were 23 (26%) health care facilities which scored lower than 50%; 41 (47%) scored between 50 to 79%; 24 (27%) scored 80% or higher.
- ➔ Several IPC activities took place in the past week. A total of 100 traditional healers have received IPC training in Beni Health Zone; 563 out of 625 health care facilities were supervised for IPC activities; 74 health care facilities received available IPC and WASH kits; 1029 out of 1233 target healthcare providers attended briefings about IPC.

Points of Entry (PoE)

- On 24 May 2020, over 77,530 screenings were performed, bringing the cumulative number of travelers screened since August 2018 to 179,054,565. During the reporting period, 84 alerts were notified, of which 38 (45%) were validated as suspect cases following investigation. None were subsequently confirmed with EVD by laboratory testing. The cumulative number of EVD positive cases identified at PoEs and Points of Control (PoCs) remains at 30.
- There has been a slow down in health control activities at Beni PoCs as a result of demonstrations organized by local civil society pressure groups.
- The International Organization for Migration (IOM) continues to build competencies of public health professionals from MOH on surveillance of travelers and raise awareness of EVD risks to communities living around PoEs and PoCs. In the past week, 19 MOH personnel in Goma were trained on these competencies, and approximately 3000 community members in Beni, Mangina and Butembo participated in these activities.

Safe and Dignified Burials (SDB)

- In the past week, a total of 165 SDB alerts were received, among which 159 (96%) were successfully provided safe and dignified burials. SDBs were conducted in the community (57 successful SDBs), by ETCs (two successful SDBs) and by hospitals (100 successful SDBs).
- Among these SDBs, there were 59 alerts and 58 successful burials in Beni.

Risk communication, social mobilization and community engagement

- As of 22 May 2020, the commission is continuing educational talks and community advocacy dialogues with community target groups to strengthen vigilance, as well as with traditional practitioners and health facility managers to obtain their collaboration in the early transfer of suspected cases to transit and treatment centres in Beni, Mabalako and Katwa.

Preparedness and Operational Readiness

Operational readiness in the Democratic Republic of the Congo:

预览已结束，完整报告链接和二维码如下：

https://www.yunbaogao.cn/report/index/report?reportId=5_24592

