

# EBOLA VIRUS DISEASE

Democratic Republic of the Congo



External Situation Report 90



World Health  
Organization

REGIONAL OFFICE FOR

Africa

# EBOLA VIRUS DISEASE



## Democratic Republic of the Congo External Situation Report 90

Date of issue: 28 April 2020

Data as reported by: 26 April 2020

### 1. Situation update



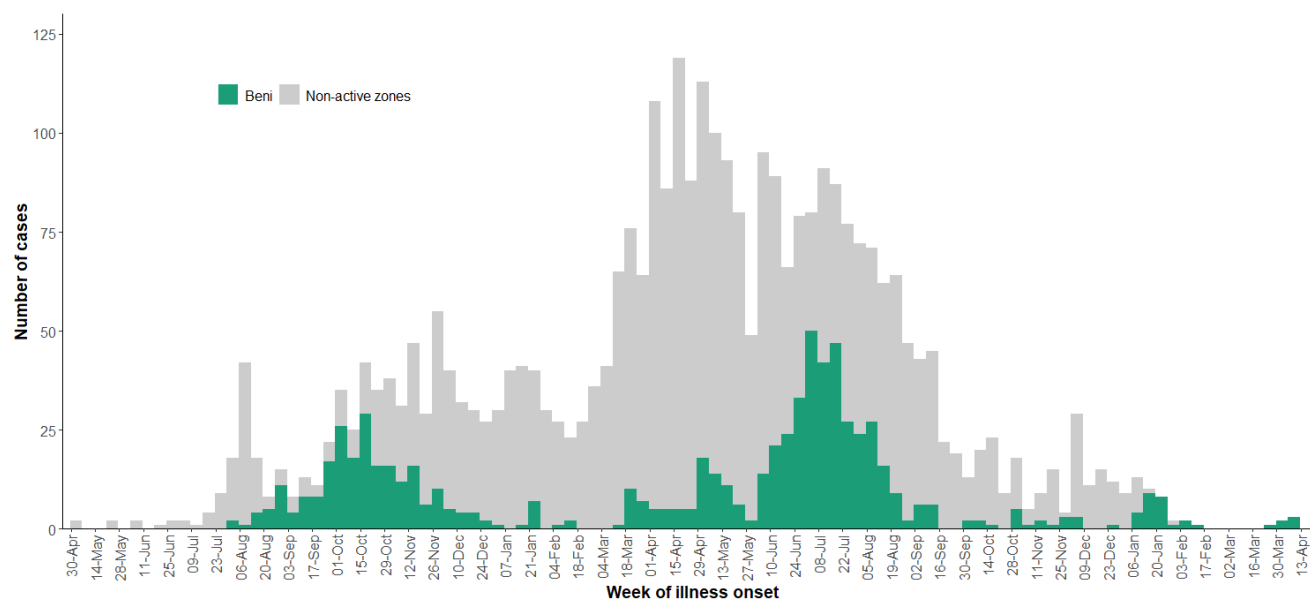
From 20 to 26 April 2020, there have been no new confirmed cases of Ebola virus disease (EVD) reported in the Democratic Republic of the Congo. Since the resurgence of the outbreak on 10 April 2020, six confirmed cases have been reported, all from the Kasanga Health Area in Beni Health Zone. Of these six cases, one confirmed case who was receiving care at an Ebola treatment centre (ETC) recovered and was discharged after two consecutive negative tests; one confirmed case remains in the community and response teams are engaging with the community in order to address this situation; four cases died, including two community deaths and two deaths in the ETC in Beni.

Specimens from confirmed cases were sent to the Institut Research Biomedicale (INRB) for genetic sequencing to support surveillance teams in investigating the source of infection and to determine if cases were linked to a known source of transmission. A total of 942 contacts of these cases have been registered; among these contacts, 849 (90%) were followed, 668 (71%) were vaccinated. Of the 942 contacts, 385 (41%) were high risk contacts (direct contact with body fluids of confirmed cases), among whom 59 (15%) are voluntarily isolating in a dedicated site where essential goods and health services are provided to them.

From 20 to 26 April 2020, an average of 2172 alerts were reported and investigated per day. Of these, an average of 221 alerts were validated as suspected cases each day, requiring specialized care and laboratory testing to rule-out EVD. In the past three weeks, the alert rate remains suboptimal as teams are pulled in to other local and global emergencies. Response teams also face other challenges, such as insecurity, limited access to communities, movement of contacts, and possible under-reporting to the central coordination of the outbreak response. Timely testing of suspected cases continues to be provided from eight laboratories. From 20 to 26 April 2020, 1544 samples were tested including 961 blood samples from alive, suspected cases; 285 swabs from community deaths; and 298 samples from re-tested patients. Overall, laboratory activities increased by 50% compared to the previous week.

As of 26 April 2020, a total of 3461 EVD cases, including 3316 confirmed and 145 probable cases have been reported, of which 2279 cases died (overall case fatality ratio 66%). Of the total confirmed and probable cases, 57% ( $n=1958$ ) were female, 29% ( $n=992$ ) were children aged less than 18 years, and 5% ( $n=171$ ) were healthcare workers. As of 26 April 2020, 1170 cases have recovered from EVD.

**Figure 1: Health zone of reported Ebola virus disease cases by week of illness onset, as of 26 April 2020**



*\*Excludes n=96/3461 cases for whom onset dates not reported. Data in recent weeks are subject to delays in case confirmation and reporting, as well as ongoing data cleaning.*

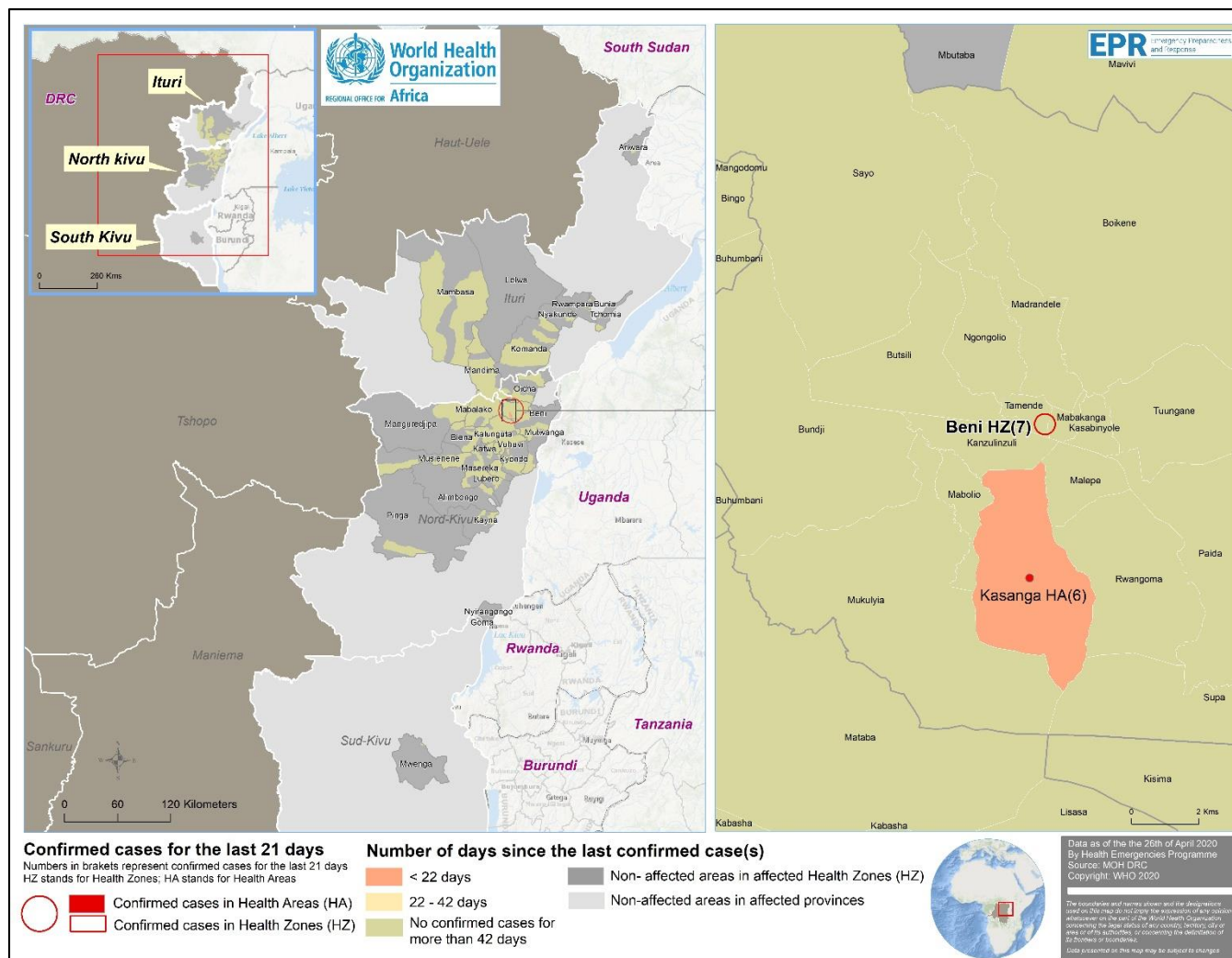
**Table 1: Ebola virus disease cases by classification and health zones in North Kivu and Ituri provinces, Democratic Republic of the Congo, as of 26 April 2020**

Province	Health Zone	Health areas reporting at least one case in previous 21 days / total number of health areas	Confirmed cases in the last 21 days	Cumulative cases by classification			Cumulative deaths	
				Confirmed cases	Probable cases	Total cases	Deaths among confirmed cases	Total deaths
South Kivu	Mwenga	0/18	0	6	0	6	3	3
North Kivu	Alimbongo	0/20	0	5	1	6	2	3
	Beni	2/18	6	727	9	736	469	478
	Biena	0/16	0	19	2	21	12	14
	Butembo	0/15	0	295	7	302	353	360
	Goma	0/10	0	1	0	1	1	1
	Kalunguta	0/18	0	198	23	221	71	94
	Katwa	0/18	0	652	24	676	471	495
	Kayna	0/21	0	28	1	29	8	9
	Kyondo	0/22	0	25	6	31	15	21
	Lubero	0/19	0	32	2	34	4	6
	Mabalako	0/12	0	463	18	481	334	352
	Manguredjipa	0/10	0	18	3	21	12	15
	Masereka	0/16	0	50	6	56	17	23
	Musienene	0/20	0	85	1	86	33	34
	Mutwanga	0/19	0	32	0	32	12	12
	Nyiragongo	0/10	0	3	0	3	1	1
	Oicha	0/26	0	65	0	65	30	30
	Pinga	0/18	0	1	0	1	0	0
	Vuhovi	0/12	0	103	14	117	37	51
Ituri	Ariwara	0/21	0	1	0	1	1	1
	Bunia	0/20	0	4	0	4	4	4
	Komanda	0/15	0	56	10	66	44	54
	Lolwa	0/8	0	6	0	6	1	1
	Mambasa	0/17	0	82	5	87	27	32
	Mandima	0/15	0	347	12	359	166	178
	Nyakunde	0/12	0	2	0	2	1	1
	Rwampara	0/13	0	8	1	9	3	4
Total	Tchomia	0/12	0	2	0	2	2	2
		2/471	6	3316	145	3461	2134	2279

*Note: Attributions of cases notified in recent days to a health zone are subjected to changes upon in-depth investigations*



**Figure 2: Geographical distribution of confirmed and probable Ebola virus disease cases by health area, North Kivu and Ituri provinces, Democratic Republic of the Congo, 26 April 2020**



*\*Data are subject to delays in case confirmation and reporting, as well as ongoing data cleaning and reclassification – trends during recent weeks should be interpreted cautiously.*

## 2. Actions to date

The Government and the Ministry of Health (MOH) and other national authorities in the Democratic Republic of the Congo, WHO, and partners are implementing outbreak control interventions together with teams in the surrounding provinces, who are taking measures to ensure that they are response-ready.

An overview of key activities is summarized below:

### Surveillance and Laboratory

- ➔ From 20 to 26 April 2020, an average of 2172 alerts were reported and investigated per day. Of these, an average of 221 alerts were validated as suspected cases each day.
- ➔ Timely testing of suspected cases continues to be provided from eight operational laboratories. From 20 to 26 April 2020, 1544 samples were tested including 961 blood samples from alive, suspected cases; 285 swabs from community deaths; and 298 samples from re-tested patients. Overall, laboratory activities increased by 50% compared to the previous week.
- ➔ Over 250 000 contacts have been registered since the beginning of the outbreak.

### Vaccines

- ➔ As of 26 April 2020, 423 people received the rVSV-ZEBOC-GP vaccine in Kasanga Health Area, Beni Health Zone, in the past week, bringing the total number of people vaccinated since August 2018 to 302 401.
- ➔ WHO anticipates potential longer-term challenges with the vaccine pipeline due to limited flight ability as a result of the COVID-19 pandemic.

### Case management

- ➔ Ebola treatment centres (ETCs), transit centres (TCs), and decentralized transit centres continue to operate across outbreak affected areas, providing timely care and diagnoses for suspected EVD cases.
- ➔ As of 26 April 2020, there were no confirmed cases receiving care in ETCs.

### Infection prevention and control (IPC) and Water, Sanitation and Hygiene (WASH)

- ➔ From 20 to 26 April, 13 healthcare facilities in the Beni, Butembo and Bunia sub-coordinations were evaluated with an average IPC score of 61%.
- ➔ Contacts of confirmed cases are located in dedicated sites. There are 39 contacts, including six healthcare workers at Ndidir (in Kanyulinyuli); and 18 contacts, including 2 healthcare workers at Nyakude (in Malepe).

- ➔ A total of 657 out of 728 health care facilities were followed up regarding IPC practices, and 484 healthcare workers were briefed on topics related to IPC and WASH.
- ➔ The WHO IPC team co-facilitated training programmes in cooperation with partner organizations, in which 249 healthcare workers including nurses, hygienists, laboratory technicians and physicians from healthcare facilities in Katwa, Musienene and Butembo participated.

### Points of Entry (PoE)

- ➔ From 19 to 25 April, 1 455 484 screenings were performed, bringing the cumulative total to over 174 million. During the reporting period, 210 alerts were notified, of which 59 (28%) were validated as suspect cases following investigation. None were subsequently confirmed with EVD following laboratory testing. The cumulative number of EVD positive cases identified at PoEs and Points of Control (PoCs) remains at 30.
- ➔ The average number of PoEs and PoCs reporting daily screening is 102.
- ➔ A total of 75 PoE/PoCs participating in the EVD response are earmarked for deactivation as of 30 April 2020. A detailed PoC deactivation and exit plan has been developed to guide this process.
- ➔ Beni Health Zone remains the only health zone affected since the re-emergence of EVD. In the past week, a rapid response implementation plan was developed involving multiple partners including PoE to respond to the sporadic EVD cases that continue to be detected in the area
- ➔ The International Organization for Migration (IOM), the mayor of Butembo town and his executive team visited Kangote PoC to assess the implementation of population movement restrictions between Beni and Butembo. IOM will continue assessing the impact of movement restrictions due to COVID-19 on EVD response activities.

### Safe and Dignified Burials (SDB)

- ➔ Fourteen safe and dignified burials were conducted in Beni Health Zone. Samples were taken and none were positive for EVD.

### Risk communication, social mobilization and community engagement

- ➔ As of 24 April 2020, 633 individual interviews and four home visits were conducted in Beni, along with two educational talks on the importance of contact tracing and follow-up, vaccination, early care and good collaboration with response teams. Alert reporting has also been strengthened with the community action group.

预览已结束，完整报告链接和二维码如下：

[https://www.yunbaogao.cn/report/index/report?reportId=5\\_24656](https://www.yunbaogao.cn/report/index/report?reportId=5_24656)

