

# EBOLA VIRUS DISEASE

Democratic Republic of the Congo



External Situation Report 88



World Health  
Organization

REGIONAL OFFICE FOR

Africa

# EBOLA VIRUS DISEASE



## Democratic Republic of the Congo External Situation Report 88

Date of issue: 14 April 2020

Data as reported by: 12 April 2020

### 1. Situation update



Two new confirmed cases of Ebola virus disease (EVD) were reported in Beni Health Zone on 10 and 12 April (Figure 1). Both cases passed away in the community after visiting several healthcare facilities. Prior to this, the last person who was confirmed to have EVD in the Democratic Republic of the Congo tested negative twice and was discharged from a treatment centre on 3 March 2020.

Specimens from the two cases were sent to the Institut de Recherche Biomedicale (INRB) in Katwa and Kinshasa for genetic sequencing in order to support surveillance teams in the investigation of the source of infection and to determine whether these two cases were linked to a known chain of transmission. A total of 213 contacts of these cases have been registered, 116 of whom were followed on 12 April 2020, and 90 were vaccinated. On 9 April, two new probable cases were validated.

Active outbreak response activities continue, including retrospective and prospective surveillance, pathogen detection, and clinical management activities in previously affected areas, in addition to alert validation, supporting appropriate care and rapid diagnosis of suspected cases, building partnerships with community members to strengthen investigation of EVD deaths in communities, and strategically transitioning activities.

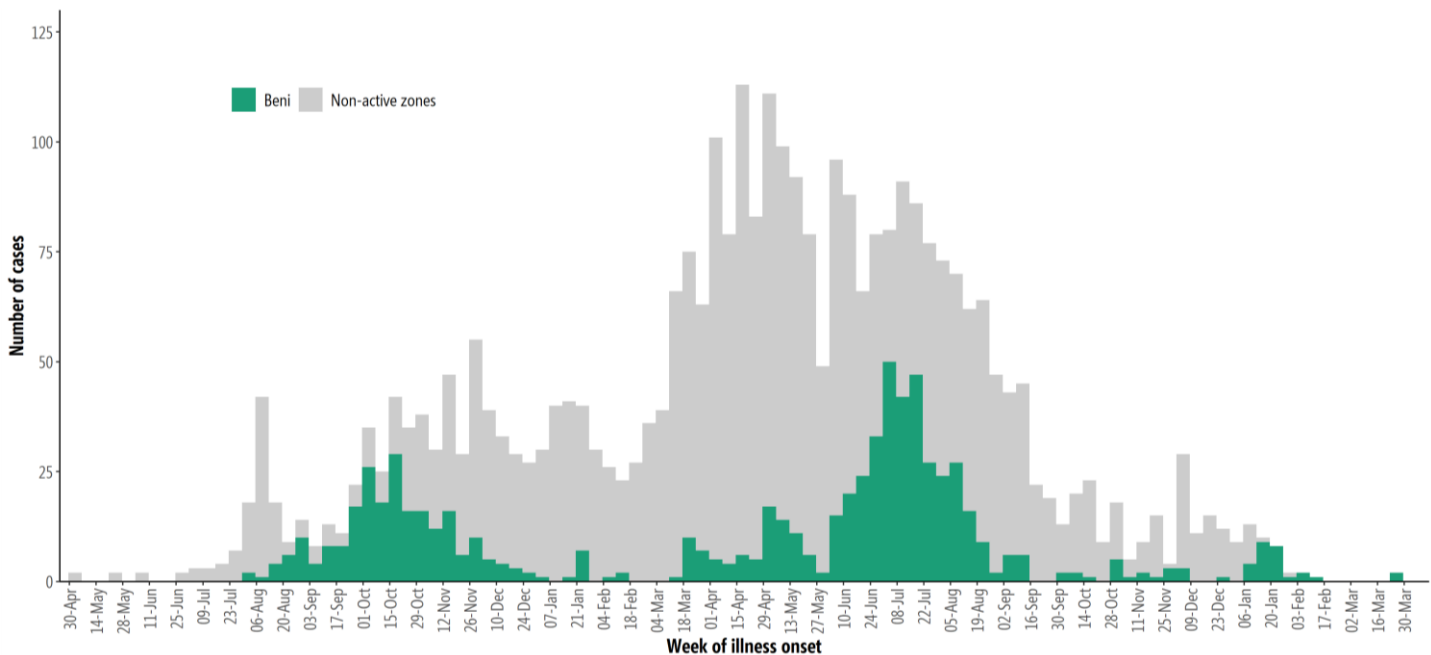
From 5 to 11 April 2020, an average of 2300 alerts were reported and investigated per day. Of these, an average of 178 alerts were validated as suspected cases each day, requiring specialized care and laboratory testing to rule out EVD. On average, people stay in these facilities for three days while waiting for EVD to be definitively ruled out (i.e. after two negative polymerase chain reaction tests 48 hours apart), while care is provided for their illness under isolation precautions. Timely testing of suspected cases continues to be provided from 11 laboratories. From 6 to 12 April 2020, 968 samples were tested including 466 blood samples from alive, suspected cases; 274 swabs from community deaths; and 228 samples from re-tested patients. Overall, laboratory activities decreased by 28% compared to the prior week.

The number of reported alerts has been decreasing for the past three weeks and remains suboptimal, especially in light of the re-emergence of EVD in previously affected communities. It is essential to maintain appropriate levels of surveillance to the end of outbreak declaration to continue to rapidly detect and respond to relapse, re-introduction or new emergence events, and to implement effective control measures.

As of 12 April 2020, a total of 3457 EVD cases were reported from 29 health zones (Table 1), including 3312 confirmed and 145 probable cases, of which 2277 cases died (overall case fatality ratio 66%). Of the total confirmed and probable cases, 56% (1943) were female, 28% (982) were children aged less than 18 years, and 5% (171) were healthcare workers.

An urgent injection of US\$ 20 million is required to ensure that response teams have the capacity to maintain the appropriate level of operations through to the beginning of May 2020. For more information see this recent statement: <https://www.who.int/news-room/detail/06-03-2020-end-in-sight-but-flare-ups-likely-in-the-ebola-outbreak-in-the-democratic-republic-of-the-congo>

Figure 1: Health zone of reported Ebola virus disease cases by week of illness onset, as of 12 April 2020



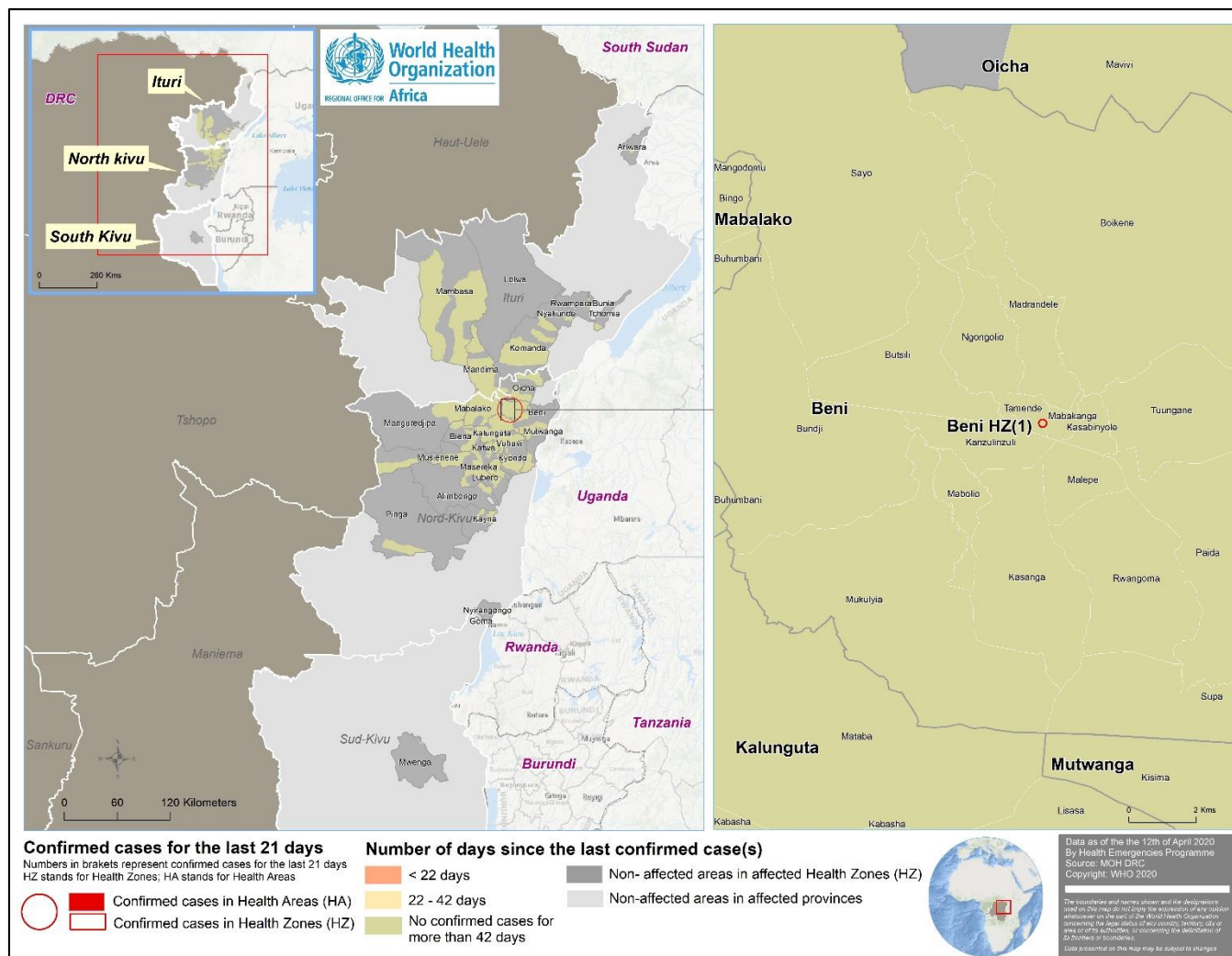
\*Excludes n=133/3457 cases for whom onset dates not reported. Data in recent weeks are subject to delays in case confirmation and reporting, as well as ongoing data cleaning.

**Table 1: Ebola virus disease cases by classification and health zones in North Kivu and Ituri provinces, Democratic Republic of the Congo, as of 12 April 2020**

Province	Health Zone	Health areas reporting at least one case in previous 21 days / total number of health areas	Confirmed cases in the last 21 days	Cumulative cases by classification			Cumulative deaths	
				Confirmed cases	Probable cases	Total cases	Deaths among confirmed cases	Total deaths
South Kivu	Mwenga	0/18	0	6	0	6	3	3
North Kivu	Alimbongo	0/20	0	5	1	6	2	3
	Beni	1/18	2	723	9	732	467	476
	Biena	0/16	0	19	2	21	12	14
	Butembo	0/15	0	295	7	302	353	360
	Goma	0/10	0	1	0	1	1	1
	Kalunguta	0/18	0	198	23	221	71	94
	Katwa	0/18	0	653	24	677	471	495
	Kayna	0/21	0	28	1	29	8	9
	Kyondo	0/22	0	25	6	31	15	21
	Lubero	0/19	0	31	2	33	4	6
	Mabalako	0/12	0	463	18	481	334	352
	Manguredjipa	0/10	0	18	3	21	12	15
	Masereka	0/16	0	50	6	56	17	23
	Musienene	0/20	0	85	1	86	33	34
	Mutwanga	0/19	0	32	0	32	12	12
	Nyiragongo	0/10	0	3	0	3	1	1
	Oicha	0/26	0	65	0	65	30	30
	Pinga	0/18	0	1	0	1	0	0
	Vuhovi	0/12	0	103	14	117	37	51
Ituri	Ariwara	0/21	0	1	0	1	1	1
	Bunia	0/20	0	4	0	4	4	4
	Komanda	0/15	0	56	10	66	44	54
	Lolwa	0/8	0	6	0	6	1	1
	Mambasa	0/17	0	82	5	87	27	32
	Mandima	0/15	0	347	12	359	166	
	Nyakunde	0/12	0	2	0	2	1	1
	Rwampara	0/13	0	8	1	9	3	4
Total	Tchomia	0/12	0	2	0	2	2	2
		1/471	2	3312	145	3457	2132	2277

*Note: Attributions of cases notified in recent days to a health zone are subjected to changes upon in-depth investigations*

**Figure 2: Geographical distribution of confirmed and probable Ebola virus disease cases by health area, North Kivu and Ituri provinces, Democratic Republic of the Congo, 12 April 2020**



*\*Data are subject to delays in case confirmation and reporting, as well as ongoing data cleaning and reclassification – trends during recent weeks should be interpreted cautiously.*



## 2. Actions to date

The Government and the Ministry of Health (MOH) and other national authorities in the Democratic Republic of the Congo, WHO, and partners are implementing outbreak control interventions together with teams in the surrounding provinces, who are taking measures to ensure that they are response-ready.

An overview of key activities is summarized below:

### Surveillance and Laboratory

- From 5 to 11 April 2020, an average of 2300 alerts were reported and investigated per day. Of these, an average of 178 alerts were validated as suspected cases each day. There was a continued decrease in the overall level of alerts.
- Testing of suspected cases continues to be provided across 11 operational laboratories. From 6 to 12 April, 968 samples were tested which was a 28% decrease compared to the previous week.
- Approximately 250 000 contacts have been registered since the beginning of the outbreak.

### Vaccines

- As of 11 April 2020, six people received the rVSV-ZEBOC-GP vaccine in Kasanga health area, Beni Health Zone, bringing the total number of people vaccinated since August 2018 to 301 782.

### Case management

- Ebola treatment centres (ETCs), transit centres (TCs), and decentralized transit centres continue to operate across outbreak affected areas, providing timely care and diagnoses for suspected EVD cases.

预览已结束，完整报告链接和二维码如下：

[https://www.yunbaogao.cn/report/index/report?reportId=5\\_24692](https://www.yunbaogao.cn/report/index/report?reportId=5_24692)

