

EBOLA VIRUS DISEASE

Democratic Republic of the Congo



External Situation Report 82



World Health
Organization

REGIONAL OFFICE FOR

Africa

EBOLA VIRUS DISEASE

Democratic Republic of the Congo External Situation Report 82



Date of issue: 3 March 2020
Data as reported by: 1 March 2020

1. Situation update



From 24 February to 1 March 2020, no new confirmed cases of Ebola virus disease (EVD) were reported in the Democratic Republic of the Congo (Figure 1). In the past 21 days (10 February to 1 March), the outbreak has been confined to a relatively small geographic area. During this period, two new confirmed cases were reported from one health area in Beni Health Zone, North Kivu Province (Figure 2, Table 1). It has been more than 42 days since new cases were detected in all health zones except Beni and Mabalako, though surveillance activities are ongoing in all health zones to avoid resurgence of the outbreak.

Transmission of Ebola virus can occur in groups outside current surveillance activities, even with strengthened operations. Ebola virus persists in some survivors' body fluids, with potential to infect others and relapse was observed in at least one instance during this outbreak, sparking a new chain of transmission. It is thus crucial to maintain response capacities to rapidly detect and respond to any new cases and to prioritize continued survivor support, monitoring and cooperative relationships with the survivors' associations. These activities will reinforce surveillance capacity and trust.

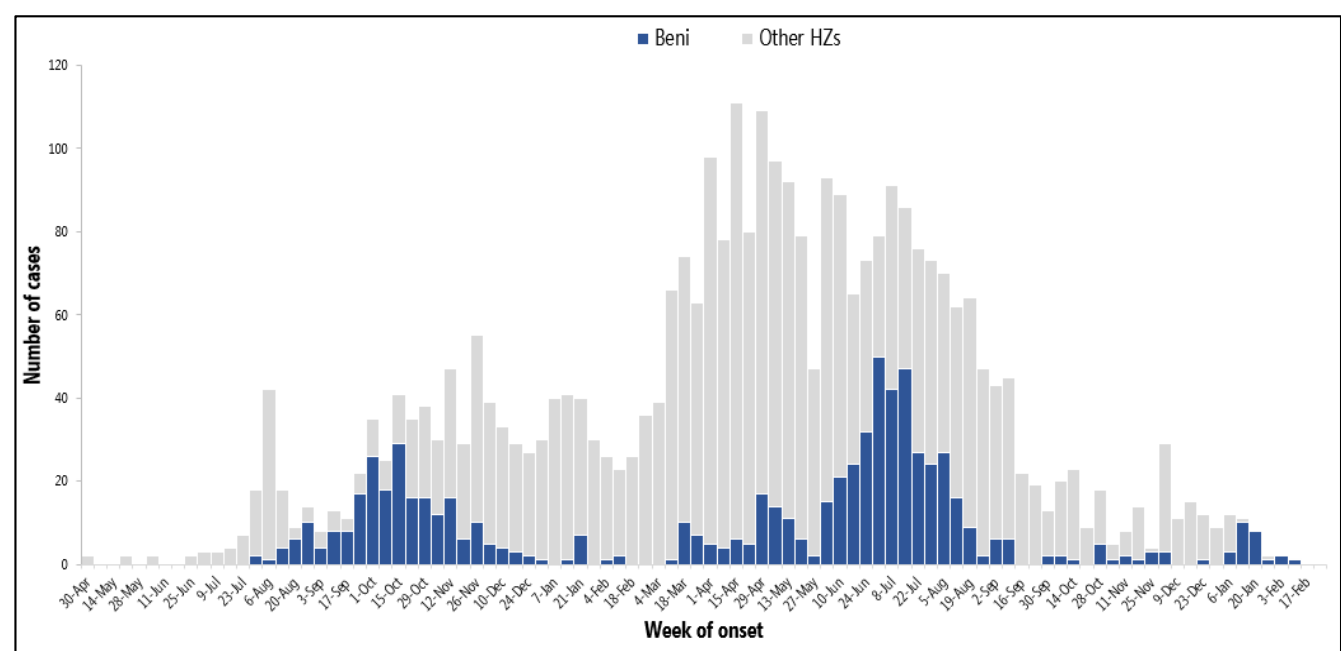
Ongoing surveillance, pathogen detection, and clinical management activities include alert validation, contact follow-up, supporting rapid diagnostics of suspected cases, and building partnerships with community members to strengthen investigation of potential EVD patients who pass away in communities. As of 1 March, 139 contacts are currently under surveillance, of which 99% were followed daily in the last seven days. More than 5100 alerts per day continue to be reported and investigated, of which over 400 alerts (including ~70 community deaths) are validated as suspected EVD cases, requiring laboratory testing and specialized care within the established Ebola treatment and transit centres. On average, suspect cases stay in these facilities for three days before EVD can be definitively ruled out (i.e. after two negative polymerase chain reaction tests 48 hours apart), while care is provided for their illness under isolation precautions. Timely testing of suspected cases continues to be provided across 11 operational laboratories deployed in cities that have been affected by the outbreak. From 24 February to 1 March, more than 3300 samples were tested.

WHO's financial need for the Ebola Response for January to June 2020 (SRP 4.1) is US\$ 83 million. Thanks to the generosity of donors during 2019, WHO had some carry-over funding available, however, WHO immediately requires US\$ 40 million to ensure continuity of activities.

As of 1 March 2020, a total of 3444 EVD cases, including 3310 confirmed and 134 probable cases have

been reported, of which 2264 cases died (overall case fatality ratio 66%). Since August 2018, a total of 134 probable cases have been validated. Of the total confirmed and probable cases, 56% (1927) were female, 28% (973) were children aged less than 18 years, and 5% (171) were healthcare workers .

Figure 1: Health zone of reported Ebola virus disease cases by week of illness onset, as of 1 March 2020



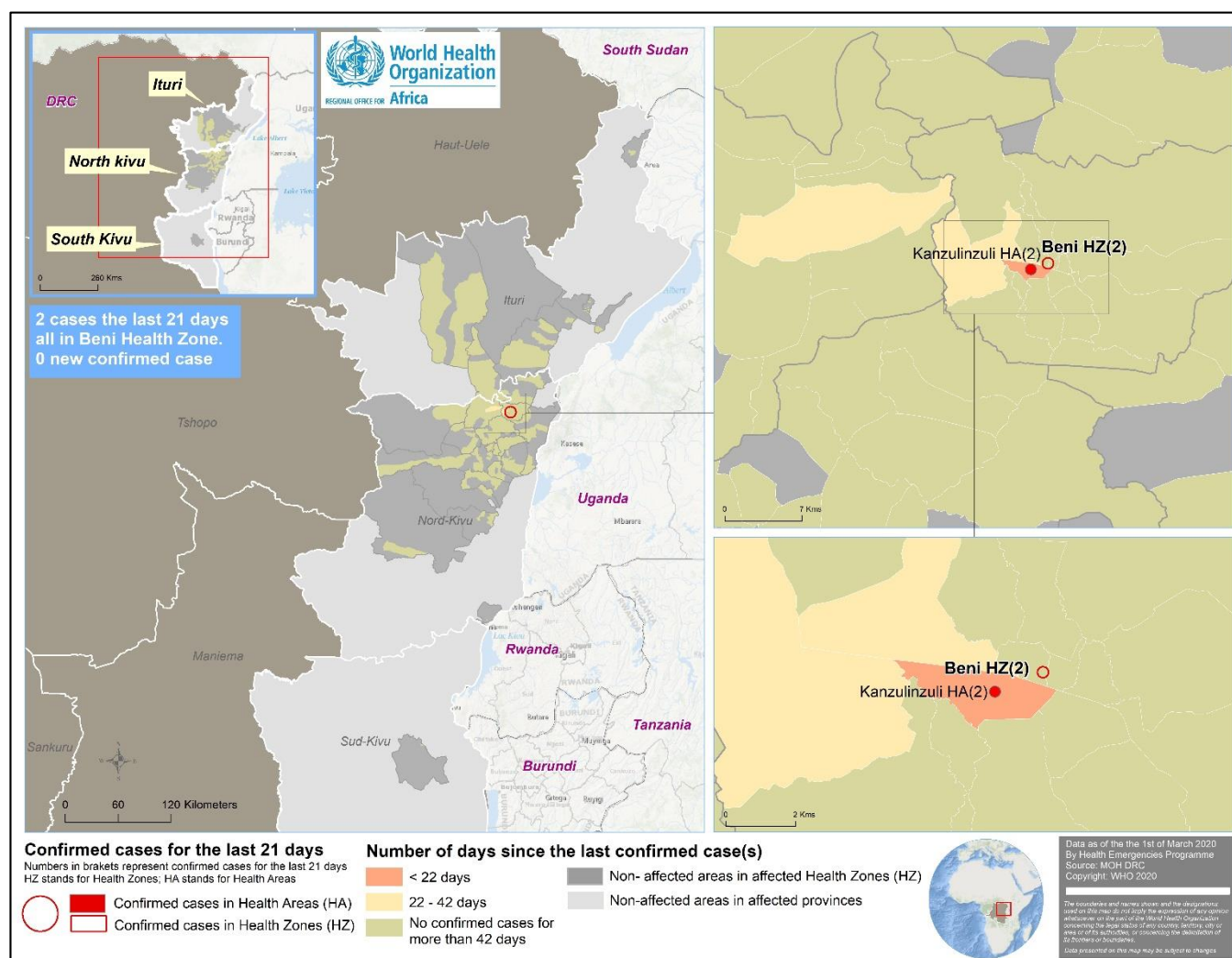
**3444 confirmed and probable cases, reported as of 1 March 2020. Excludes n=153 cases for whom onset dates not reported. Data in recent weeks are subject to delays in case confirmation and reporting, as well as ongoing data cleaning. Non-active health zones indicate health zone that have not reported cases in the last 21 days.*

Table 1: Ebola virus disease cases by classification and health zones in North Kivu and Ituri provinces, Democratic Republic of the Congo, as of 1 March 2020

Province	Health Zone	Health areas reporting at least one case in previous 21 days / total number of health areas	Confirmed cases in the last 21 days	Cumulative cases by classification			Cumulative deaths	
				Confirmed cases	Probable cases	Total cases	Deaths among confirmed cases	Total deaths
South Kivu	Mwenga	0/18	0	6	0	6	3	3
North Kivu	Alimbongo	0/20	0	5	1	6	2	3
	Beni	1/18	2	721	9	730	465	474
	Biena	0/16	0	19	2	21	12	14
	Butembo	0/15	0	295	7	302	353	360
	Goma	0/10	0	1	0	1	1	1
	Kalunguta	0/18	0	198	20	218	71	91
	Katwa	0/18	0	653	24	677	471	495
	Kayna	0/21	0	28	1	29	8	9
	Kyondo	0/22	0	25	4	29	15	19
	Lubero	0/19	0	31	2	33	4	6
	Mabalako	0/12	0	463	18	481	334	352
	Manguredjipa	0/10	0	18	1	19	12	13
	Masereka	0/16	0	50	6	56	17	23
	Musienene	0/20	0	85	1	86	33	34
	Mutwanga	0/19	0	32	0	32	12	12
	Nyiragongo	0/10	0	3	0	3	1	1
	Oicha	0/26	0	65	0	65	30	30
	Pinga	0/18	0	1	0	1	0	0
	Vuhovi	0/12	0	103	14	117	37	51
Ituri	Ariwara	0/21	0	1	0	1	1	1
	Bunia	0/20	0	4	0	4	4	4
	Komanda	0/15	0	56	10	66	44	54
	Lolwa	0/8	0	6	0	6	1	1
	Mambasa	0/17	0	82	4	86	27	31
	Mandima	0/15	0	347	10	357	166	176
	Nyakunde	0/12	0	2	0	2	1	1
	Rwampara	0/13	0	8	0	8	3	3
	Tchomia	0/12	0	2	0	2	2	2
Total		1/471	2	3310	134	3444	2130	2264

Note: Attributions of cases notified in recent days to a health zone are subjected to changes upon in-depth investigations

Figure 2: Geographical distribution of confirmed and probable Ebola virus disease cases by health area, North Kivu and Ituri provinces, Democratic Republic of the Congo, 1 March 2020



**Data are subject to delays in case confirmation and reporting, as well as ongoing data cleaning and reclassification – trends during recent weeks should be interpreted cautiously.*

2. Actions to date

The Government and the Ministry of Health (MOH) and other national authorities in the Democratic Republic of the Congo, WHO, and partners are implementing outbreak control interventions together with teams in the surrounding provinces, who are taking measures to ensure that they are response-ready.

An overview of key activities is summarized below:

Surveillance and Laboratory

- Over 249 000 contacts have been registered to date and 139 were under surveillance as of 1 March 2020. On average, 99% of contacts were followed daily in the last seven days in health zones with continued operations.
- An average of 5113 alerts were reported per day over the past seven days, of which 5050 (99%) were investigated within 24 hours of reporting.

Vaccines

- As of 1 March 2020, 299 094 people were vaccinated with the rVSV-ZEBOV-GP Ebola vaccine.
- Vaccination with the Ad26.ZEBOV/MVA-BN-Filo vaccine continued in two health areas near Goma, with 19 654 people vaccinated since its introduction on 14 November 2019, as of 1 March 2020.

Case management

预览已结束，完整报告链接和二维码如下：

https://www.yunbaogao.cn/report/index/report?reportId=5_24783

