



Mekong Malaria Elimination Programme Epidemiology summary

Volume 8, October–December 2019



Overview (October–December 2019)

From October to December 2019, Greater Mekong Subregion (GMS) countries reported 18 489 malaria cases, representing a 31% decrease compared to the same time period in 2018.

Cambodia

The country reported 6194 cases, a 62% decrease compared to the same time period in 2018. Cases are mostly in the north-eastern and south-western regions of Cambodia, along the forested border areas with Viet Nam, Lao PDR and Thailand.

China

The country reported no indigenous cases.

Lao People's Democratic Republic (PDR)

The country reported 1438 cases, a 48% decrease compared to the same time period in 2018. Most cases are in the five southern provinces.

Myanmar

The country reported 8519 cases, a 92% increase compared to the same time period in 2018. Most cases are in the border states/region to India and Bangladesh.

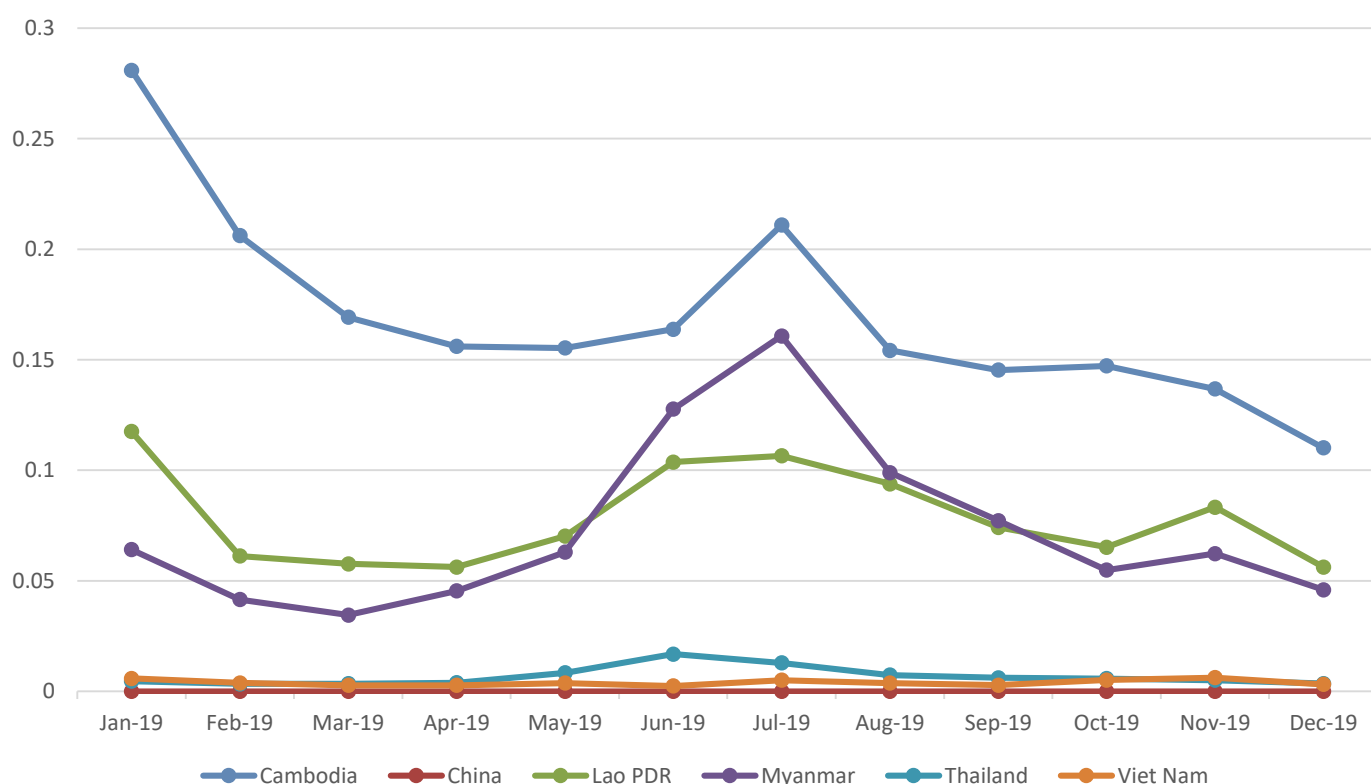
Thailand

The country reported 962 cases, a 30% decrease compared to the same time period in 2018. Most cases are in the border provinces to Malaysia, Myanmar and Cambodia.

Viet Nam

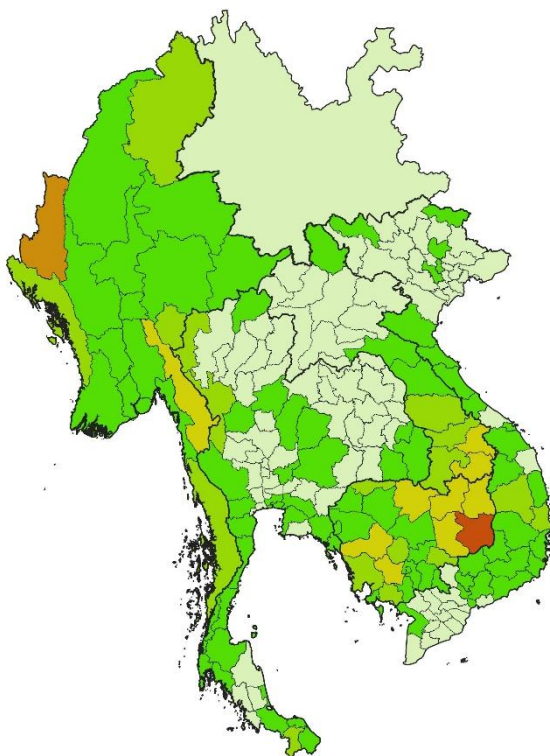
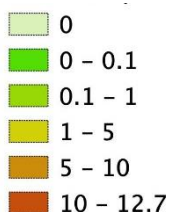
The country reported 1376 cases, a 20% increase compared to the same time period in 2018. Most cases are indigenous and located in the border provinces to Cambodia.

Monthly malaria incidence in the GMS (last 12 months)*



*Incidence is calculated as the number of reported cases per month per 1000 population.

Incidence per
1000 population



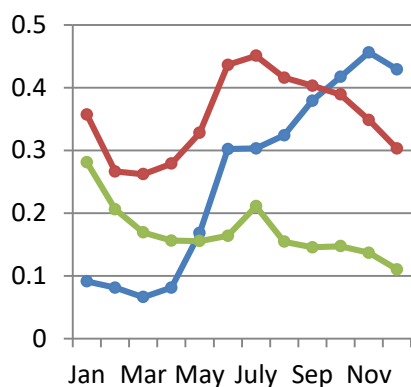
The boundaries and names shown and the designations used on this map do not imply the expression of any opinion whatsoever on the part of the World Health Organization concerning the legal status of any country, territory, city or area or of its authorities, or concerning the delimitation of its frontiers or boundaries. Dotted and dashed lines on maps represent approximate border lines for which there may not yet be full agreement.

*Incidence is calculated as the number of reported cases from October to December 2019 per 1000 population.

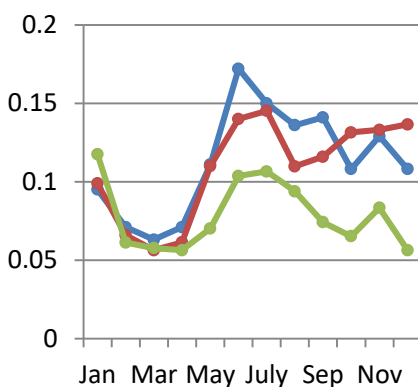
Monthly malaria incidence by country* (2017–2019)

— 2017 — 2018 — 2019

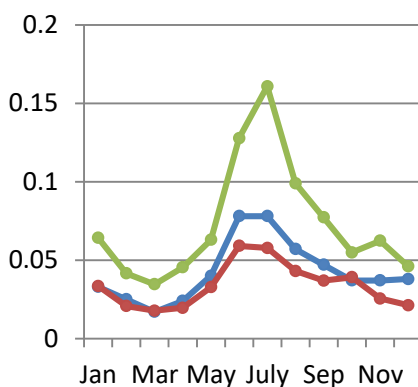
Cambodia



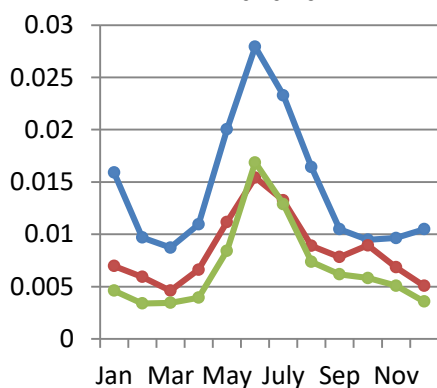
Lao PDR



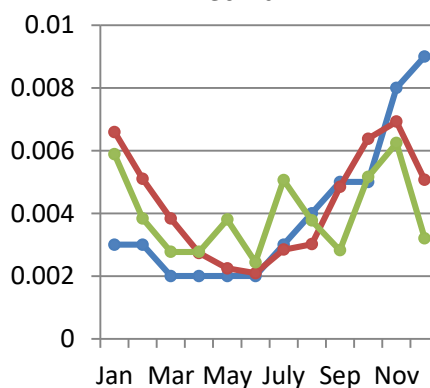
Myanmar



Thailand



Viet Nam

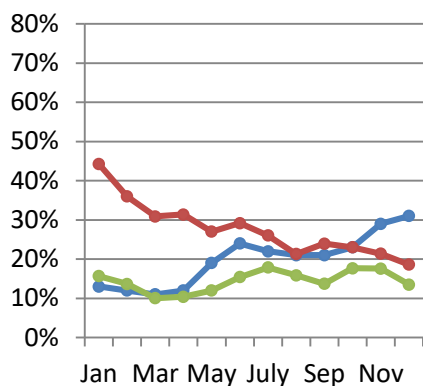


*Incidence is calculated as the number of reported cases per month per 1000 population.

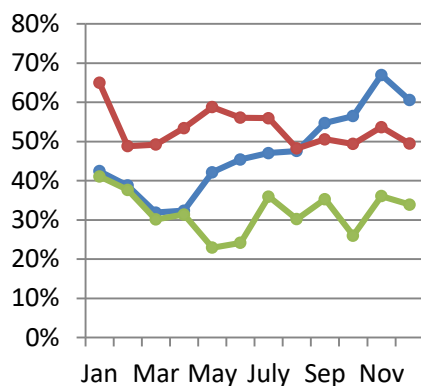
Percentage of *P. falciparum* cases by month by country* (2017–2019)

— 2017 — 2018 — 2019

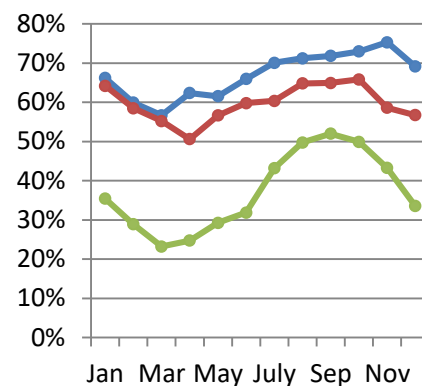
Cambodia



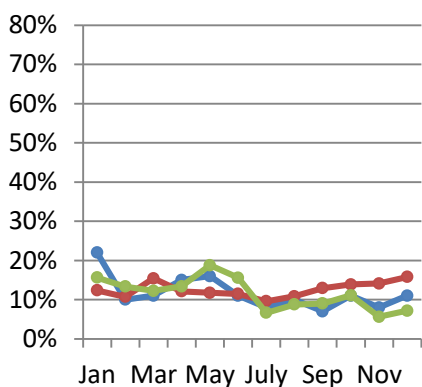
Lao PDR



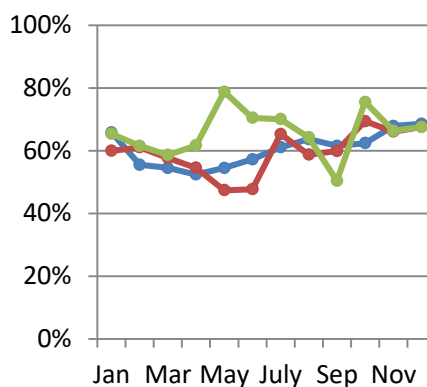
Myanmar



Thailand



Viet Nam

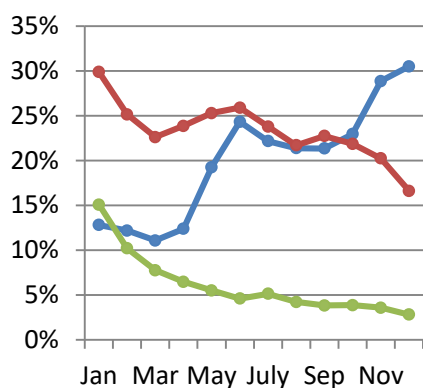


*Percentage of *P. falciparum* cases is calculated as number of confirmed cases due to *P. falciparum* divided by total confirmed cases per month per country.

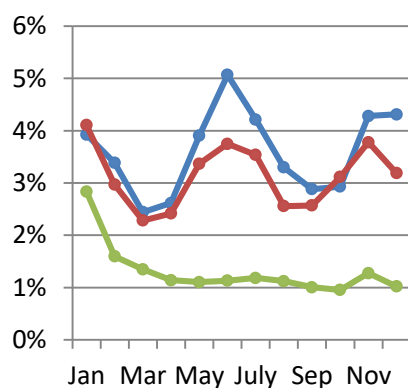
Monthly test positivity rate (TPR) by country* (2017–2019)

— 2017 — 2018 — 2019

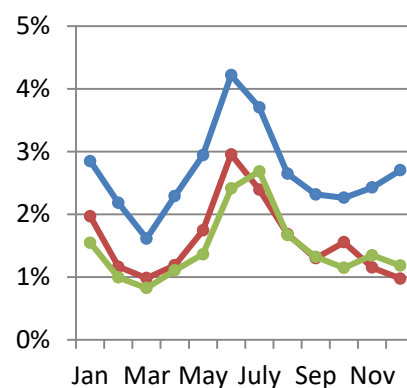
Cambodia



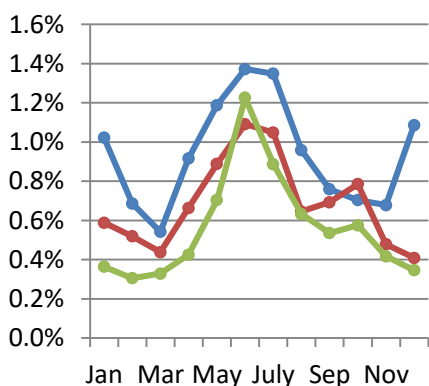
Lao PDR



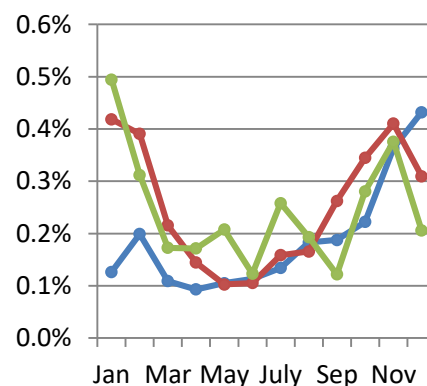
Myanmar



Thailand



Viet Nam



*TPR is calculated as number of confirmed cases divided by number of tested cases (including rapid diagnostic tests and microscopy) per month per country.

Monthly malaria cases and deaths by country in 2018 (January–December)

Country	Surveillance indicator ¹	Jan	Feb	Mar	Apr	May	Jun	Jul	Aug	Sep	Oct	Nov	Dec
Cambodia	Deaths	0	0	0	0	0	0	0	0	0	0	0	0
	Suspected cases tested	18714	16579	18135	18303	20314	26373	29676	30026	27773	27882	26978	28571
	Confirmed cases	5591	4170	4102	4368	5136	6832	7059	6514	6315	6095	5459	4745
	<i>P. falciparum</i> cases	2473	1501	1267	1371	1388	1995	1838	1389	1513	1402	1168	884
	<i>P. vivax</i> cases	2933	2561	2735	2877	3554	4631	4976	4937	4633	4573	4168	3767
	Mixed cases	185	108	100	120	194	206	245	188	169	120	123	94
	Other cases	0	0	0	0	0	0	0	0	0	0	0	0
China	Deaths	0	0	0	1	0	0	0	0	0	0	0	0
	Suspected cases tested	10961	8712	10488	10391	14468	13994	14404	16670	13344	14245	12095	12060
	Confirmed cases	11	14	20	23	25	32	21	12	8	1	3	2
	<i>P. falciparum</i> cases	1	0	0	2	0	0	1	0	0	0	1	0
	<i>P. vivax</i> cases	10	13	20	21	25	32	20	12	8	1	2	2
	Mixed cases	0	0	0	0	0	0	0	0	0	0	0	0
	Other cases	0	0	0	0	0	0	0	0	0	0	0	0
Lao PDR	Deaths	1	0	0	0	0	1	2	0	0	1	1	0
	Suspected cases tested	16683	15408	17098	17595	22620	25882	28448	29772	31255	29269	24403	29671
	Confirmed cases	685	457	390	425	762	970	1006	761	803	911	922	946
	<i>P. falciparum</i> cases	445	223	192	227	448	544	563	367	406	450	495	468
	<i>P. vivax</i> cases	231	226	190	192	309	416	433	388	388	450	407	469
	Mixed cases	9	8	8	6	5	10	10	6	9	11	20	9
	Other cases	0	0	0	0	0	0	0	0	0	0	0	0
Myanmar	Deaths	1	1	1	1	1	5	1	1	1	3	3	0
	Suspected cases tested	87965	92146	93140	85631	97133	103497	124868	132246	147269	130228	114470	112368
	Confirmed cases	1731	1072	916	1016	1694	3057	2989	2227	1913	2023	1319	1096
	<i>P. falciparum</i> cases	1111	627	506	514	960	1828	1804	1443	1242	1332	773	622
	<i>P. vivax</i> cases	572	426	395	487	714	1203	1136	742	624	657	520	461
	Mixed cases	51	20	17	18	25	47	57	42	48	35	26	12
	Other cases	0	0	0	1	0	0	0	0	1	0	0	2
Thailand ²	Deaths	Data not provided											
	Suspected cases tested	78378	75546	69551	66036	83350	93666	83700	91236	74785	75379	94738	82074
	Confirmed cases	461	392	305	438	740	1022	877	589	518	592	453	336
	<i>P. falciparum</i> cases	57	42	47	53	87	117	84	64	67	82	64	53
	<i>P. vivax</i> cases	367	321	238	367	608	860	751	500	410	487	369	269
	Mixed cases	7	9	7	3	14	10	8	2	8	3	4	1
	Other cases	31	22	15	11	52	45	39	32	38	18	11	6
Viet Nam	Deaths	0	0	0	1	0	0	0	0	0	0	0	0
	Suspected cases tested	146677	121634	165569	176352	204014	185103	166957	169698	171835	172351	157244	152475
	Confirmed cases	614	475	357	255	209	195	265	281	451	594	645	472
	<i>P. falciparum</i> cases	368	290	206	139	99	93	173	165	270	412	426	319
	<i>P. vivax</i> cases	229	169	138	106	101	96	88	112	173	180	215	151
	Mixed cases	16	15	11	8	7	5	4	1	6	2	3	2
	Other cases	1	1	2	2	2	1	0	3	2	0	1	0

¹ Mixed cases include cases identified with more than one *Plasmodium* species. Other cases refer to *P. malariae*, *P. ovale*, *P. knowlesi* and unknown. Data in the

预览已结束，完整报告链接和二维码如下：

https://www.yunbaogao.cn/report/index/report?reportId=5_24881

