

# EBOLA VIRUS DISEASE

Democratic Republic of the Congo



## External Situation Report 70



REGIONAL OFFICE FOR

World Health  
Organization

Africa

# EBOLA VIRUS DISEASE

## Democratic Republic of the Congo External Situation Report 70



Date of issue: 3 December 2019

Data as reported by: 1 December 2019

### 1. Situation update



In the week of 25 November to 1 December 2019, 10 new confirmed EVD cases were reported from two health zones in two affected provinces in the Democratic Republic of the Congo. The confirmed cases in this week came from Mabalako (50%,  $n=5$ ) and Mandima (50%,  $n=5$ ) Health Zones.

In the past week, violence, widespread civil unrest, and targeted attacks have severely disrupted the Ebola response and restricted access to affected communities in multiple locations.

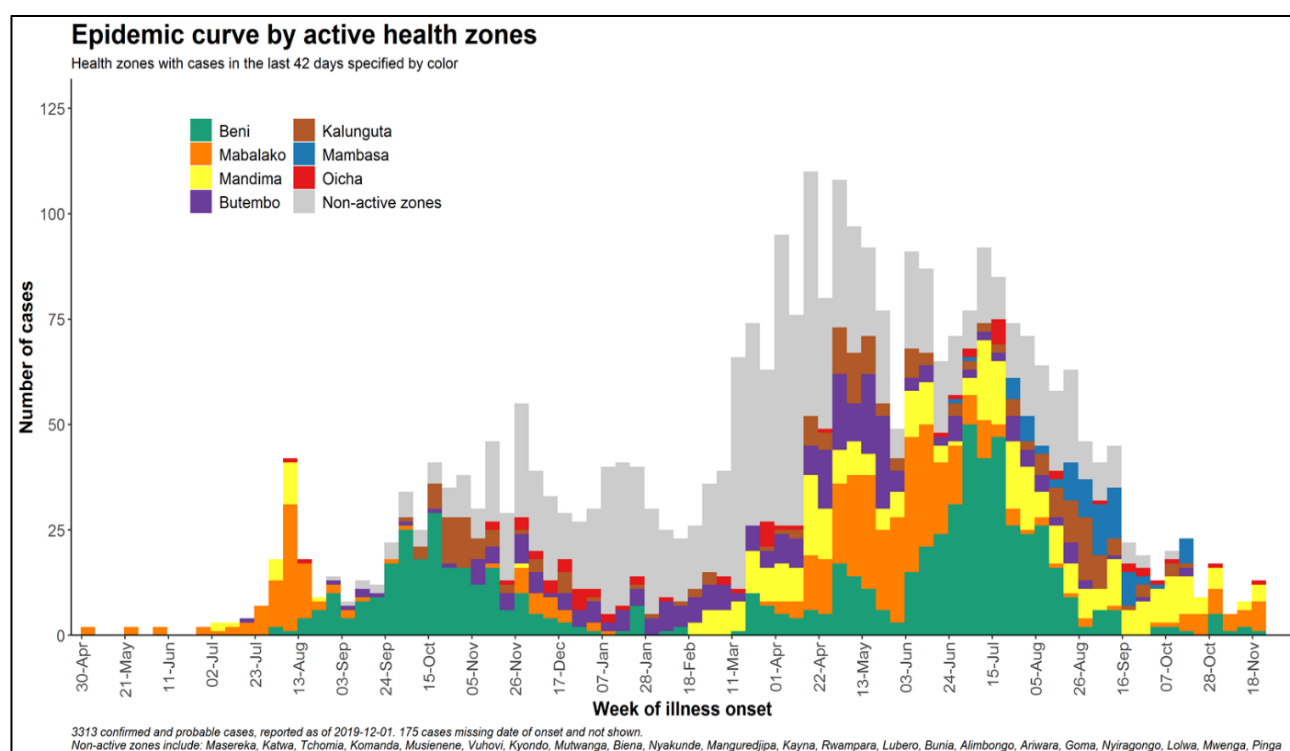
On the night of 27 November 2019, an attack on the Ebola response camp in Biakato Mines resulted in the death of three responders and the injury of seven others. Response personnel in Biakato were relocated to Goma, and the majority of response activities in the area have been suspended. On the same night, a separate attack on the Ebola coordination office in Mangina resulted in one death. Most response personnel in Mangina have also been relocated. As of 2 December 2019, North Kivu Province has declared 'ville morte' and many response activities have been suspended across the province.

As seen previously during this outbreak, such disruptions limit contact tracing, surveillance, and vaccination efforts, and they may result in increased transmission. Following insecurity, the volume of reported daily alerts from healthcare facilities and the community dropped in Beni in the six-day period from 23 to 28 November 2019 from approximately 400 per day to approximately 170. The number of alerts since 29 November 2019 is fluctuating but remains below regular levels. Proportionally, similar reductions in the number of alerts were observed in Butembo following two days of protests, but numbers still remain low. Contact tracing has improved in Oicha from only 15% of contacts under surveillance to 42%, although this is still below desirable levels. The overall average percentage of contacts under surveillance in the last 7 days is 86%, but it dropped as low as 59% on 25 November 2019. These are essential functions of the response that are well known to reduce the risk of spread of the virus, and the fluctuations in performance following insecurity may enable new chains of transmission. The emphasis now is on prioritizing response activities to maximize the impact on reducing EVD transmission, even in areas with limited access due to security.

In the past 21 days from (11 November to 1 December 2019), 11 health areas and four health zones have reported cases (Table 1, Figure 2). During this period, a total of 26 confirmed cases were reported, with the majority reported from Mabalako (54%;  $n=14$ ), Mandima (23%;  $n=6$ ), and Beni (15%;  $n=4$ ).

As of 1 December 2019, a total of 3313 EVD cases, including 3195 confirmed and 118 probable cases have been reported, of which 2204 cases died (overall case fatality ratio 67%). Of the total confirmed and probable cases, 56% (1866) were female, 28% (936) were children aged less than 18 years, and 5% (163) were healthcare workers.

**Figure 1: Health zone of reported Ebola virus disease cases by week of illness onset, as of 1 December 2019**



*\*Excludes n=184 cases for whom onset dates not reported. Data in recent weeks are subject to delays in case confirmation and reporting, as well as ongoing data cleaning. Other health zones include: Alimbongo, Ariwara, Biena, Bunia, Goma, Kalunguta, Kayna, Komanda, Kyondo, Lolwa, Lubero, Manguredjipa, Masereka, Musienene, Mutwanga, Mwenga, Nyankunde, Nyiragongo, Oicha, Pinga, Rwampara, Tchomia, and Vuhovi.*

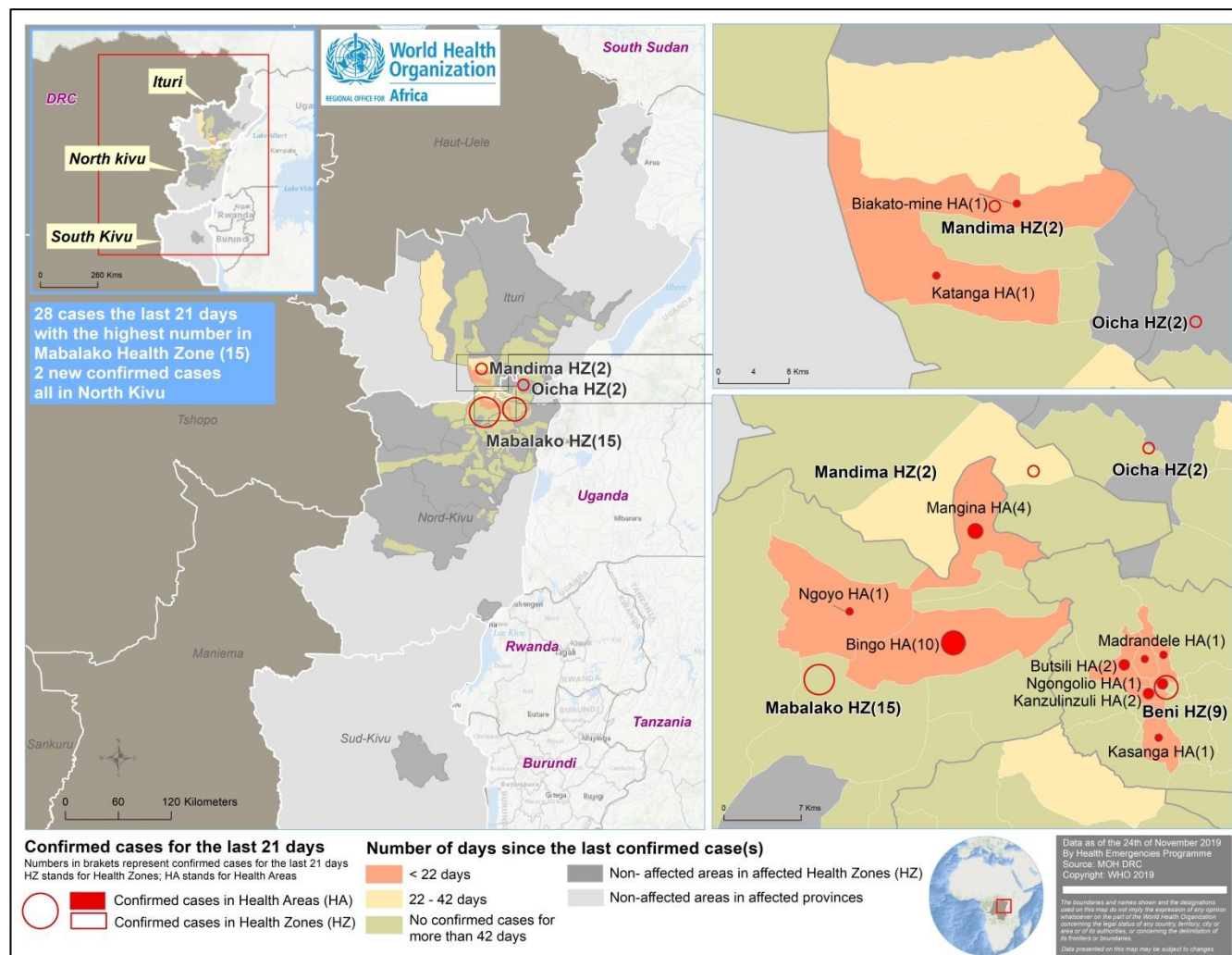
**Table 1: Ebola virus disease cases by classification and health zones in North Kivu and Ituri provinces, Democratic Republic of the Congo, as of 1 December 2019**

Province	Health Zone	Health areas reporting at least one case in previous 21 days / total number of health areas	Confirmed cases in the last 21 days	Cumulative cases by classification			Cumulative deaths	
				Confirmed cases	Probable cases	Total cases	Deaths among confirmed cases	Total deaths
South Kivu	Mwenga	0/18	0	6	0	6	3	3
North Kivu	Alimbongo	0/20	0	5	0	5	2	2
	Beni	3/18	4	689	9	698	450	459
	Biena	0/16	0	18	2	20	12	14
	Butembo	0/15	0	285	3	288	350	353
	Goma	0/10	0	1	0	1	1	1
	Kalunguta	0/18	0	193	19	212	71	90
	Katwa	0/18	0	651	23	674	470	493
	Kayna	0/21	0	28	0	28	8	8
	Kyondo	0/22	0	25	4	29	15	19
	Lubero	0/19	0	31	2	33	4	6
	Mabalako	4/12	14	406	17	423	311	328
	Manguredjipa	0/10	0	18	0	18	12	12
	Masereka	0/16	0	50	6	56	17	23
	Musienene	0/20	0	84	1	85	33	34
	Mutwanga	0/19	0	32	0	32	12	12
	Nyiragongo	0/10	0	3	0	3	1	1
	Oicha	1/26	2	64	0	64	30	30
	Pinga	0/18	0	1	0	1	0	0
	Vuhovi	0/12	0	103	14	117	37	51
Ituri	Ariwara	0/21	0	1	0	1	1	1
	Bunia	0/20	0	4	0	4	4	4
	Komanda	0/15	0	56	10	66	44	54
	Lolwa	0/8	0	6	0	6	1	1
	Mambasa	0/17	0	78	3	81	27	30
	Mandima	3/15	6	345	5	350	164	169
	Nyakunde	0/12	0	2	0	2	1	1
	Rwampara	0/13	0	8	0	8	3	3
	Tchomia	0/12	0	2	0	2	2	2
<b>Total</b>		<b>11/471</b>	<b>26</b>	<b>3195</b>	<b>118</b>	<b>3313</b>	<b>2086</b>	<b>2204</b>

*Note: Attributions of cases notified in recent days to a health zone are subjected to changes upon in-depth investigations*



**Figure 2: Geographical distribution of confirmed and probable Ebola virus disease cases by health area, North Kivu and Ituri provinces, Democratic Republic of the Congo, 1 December 2019**



*\*Data are subject to delays in case confirmation and reporting, as well as ongoing data cleaning and reclassification – trends during recent weeks should be interpreted cautiously.*

## 2. Actions to date

The Government and the Ministry of Health (MOH) and other national authorities in the Democratic Republic of the Congo, WHO, and partners are implementing outbreak control interventions together with teams in the surrounding provinces, who are taking measures to ensure that they are response-ready.

An overview of key activities is summarized below:

### Surveillance and Laboratory

- Over 235 000 contacts have been registered to date, and 2210 are currently under surveillance as of 1 December 2019. On average, 86% of contacts were followed daily in the last seven days in health zones with continued operations.
- An average of 3359 alerts were reported per day over the past seven days, of which 3197 (95%) were investigated within 24 hours of reporting.
- There are 12 field laboratories with Ebola virus diagnostic capacity operational in the Democratic Republic of the Congo, located in Beni, Biakato, Butembo, Bukavu, Bunia, Goma, Kasindi, Katwa, Komanda, Mambasa, Mangina, and Mwenga. All the laboratories are using GeneXpert as the primary diagnostic tool. Central laboratory support is provided by the Institute of Biomedical Research (INRB) laboratory in Kinshasa.
- The Institut National Pour la Recherche Biomedicale (INRB) laboratory tested 2797 samples from 25 November to 1 December 2019. The number of samples tested in this time period decreased by 23% compared to the previous week, mostly due to security reasons.
- The proportion of positive cases among new samples is less than 1% (7 new confirmed cases among 1447 alive suspected cases).

### Vaccines

- From 8 August 2018 to 30 November 2019, 255 441 persons were vaccinated with the rVSV-ZEBOV-GP Ebola vaccine.
- Vaccination with the Johnson & Johnson vaccine (Ad26.ZEBOV/MVA-BN-Filo) continued in the Karisimbi Health Zone, with 872 people vaccinated as of 30 November 2019.

预览已结束，完整报告链接和二维码如下：

[https://www.yunbaogao.cn/report/index/report?reportId=5\\_24923](https://www.yunbaogao.cn/report/index/report?reportId=5_24923)

