



Mekong Malaria Elimination Programme Epidemiology summary

Volume 7, July–September 2019



Overview (July–September 2019)

From July to September 2019, Greater Mekong Subregion (GMS) countries reported 20 916 malaria cases, representing a 36% decrease compared to the same time period in 2018.

Cambodia

The country reported 8023 cases, a 60% decrease compared to the same time period in 2018. Cases are mostly in the north-eastern and south-western regions of Cambodia, along the forested border areas with Viet Nam, Lao PDR and Thailand.

China

The country reported no indigenous cases.

Lao People's Democratic Republic (PDR)

The country reported 1850 cases, a 28% decrease compared to the same time period in 2018. Most cases are in the five southern provinces.

Myanmar

The country reported 8216 cases, a 15% increase compared to the same time period in 2018. Most cases are in the border states/region to India and Bangladesh.

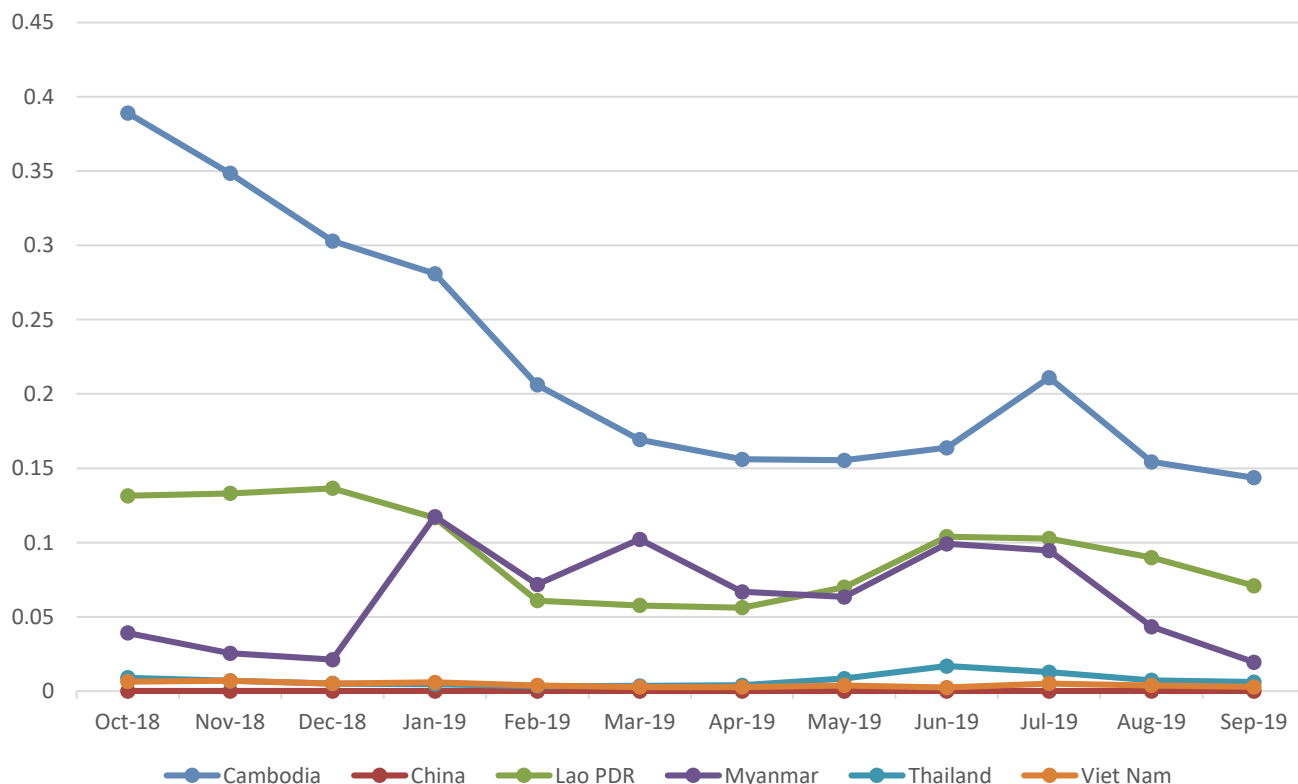
Thailand

The country reported 1729 cases, a 13% decrease compared to the same time period in 2018. Most cases are in the border provinces to Malaysia, Myanmar and Cambodia.

Viet Nam

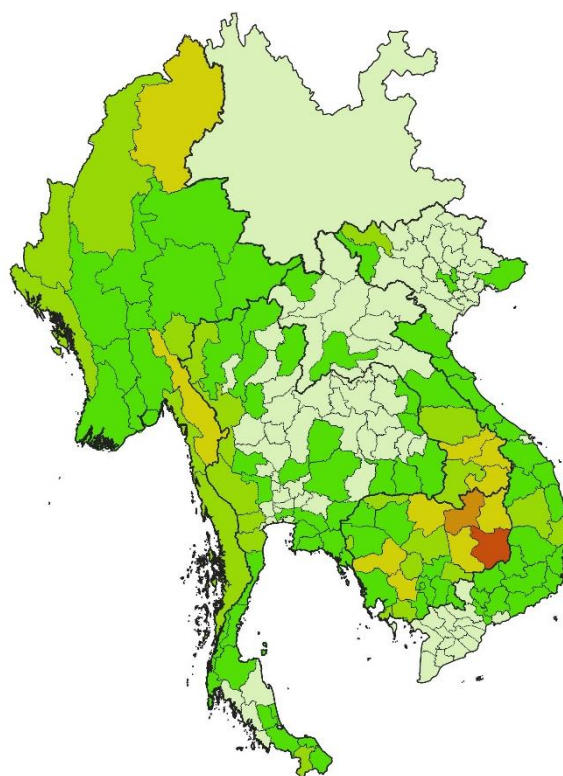
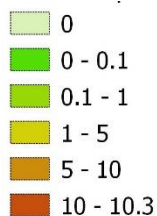
The country reported 1098 cases, a 10% increase compared to the same time period in 2018. Most cases are indigenous and located in the border provinces to Cambodia.

Monthly malaria incidence in the GMS (last 12 months)*



*Incidence is calculated as the number of reported cases per month per 1000 population.

Incidence per
1000 population



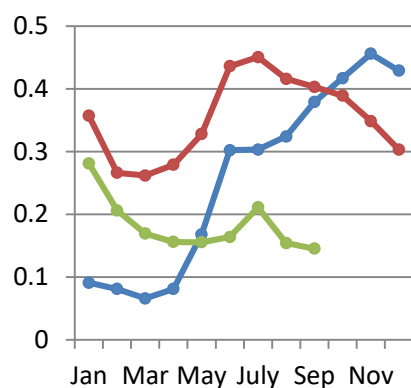
The boundaries and names shown and the designations used on this map do not imply the expression of any opinion whatsoever on the part of the World Health Organization concerning the legal status of any country, territory, city or area or of its authorities, or concerning the delimitation of its frontiers or boundaries. Dotted and dashed lines on maps represent approximate border lines for which there may not yet be full agreement.

*Incidence is calculated as the number of reported cases from July to September 2019 per 1000 population.

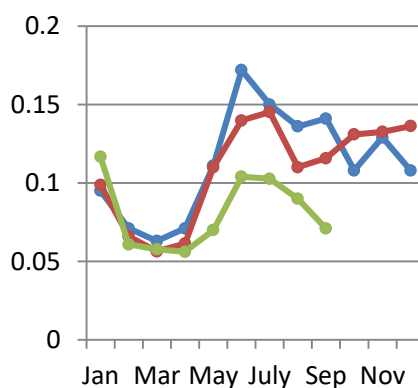
Monthly malaria incidence by country* (2017–2019)

— 2017 — 2018 — 2019

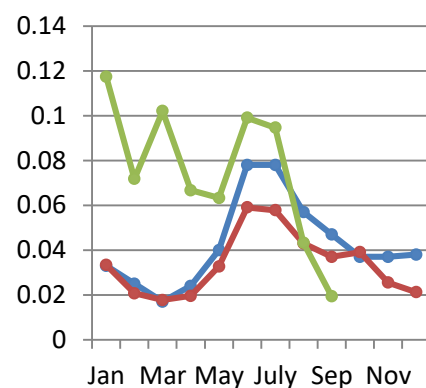
Cambodia



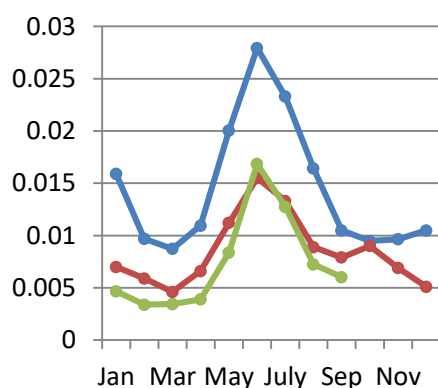
Lao PDR



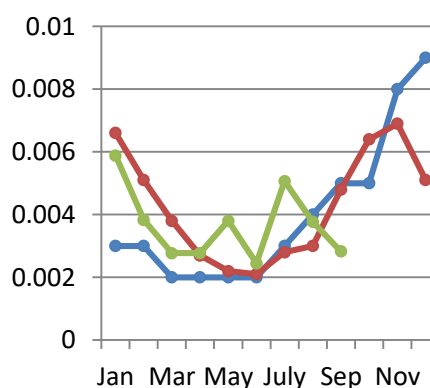
Myanmar



Thailand



Viet Nam

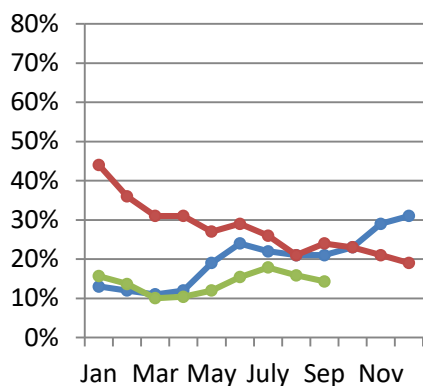


*Incidence is calculated as the number of reported cases per month per 1000 population.

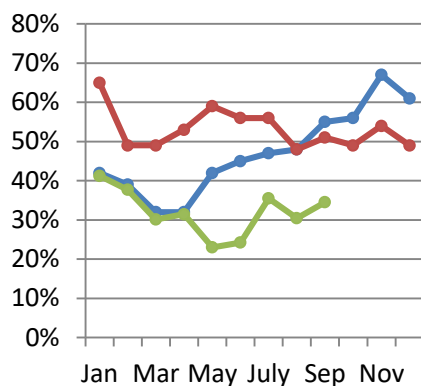
Percentage of *P. falciparum* cases by month by country* (2017–2019)

— 2017 — 2018 — 2019

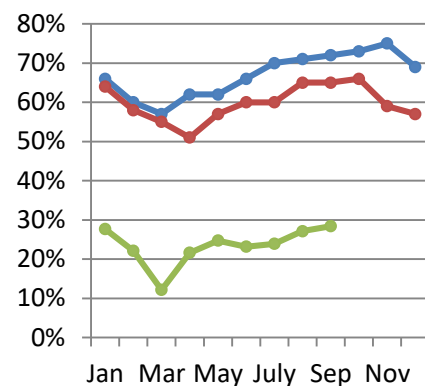
Cambodia



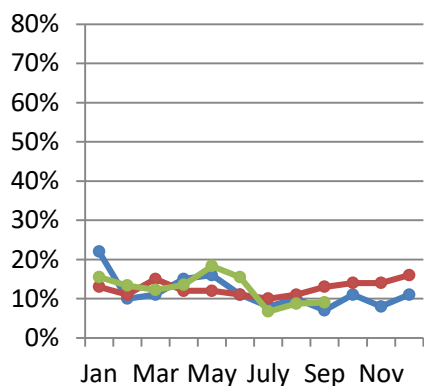
Lao PDR



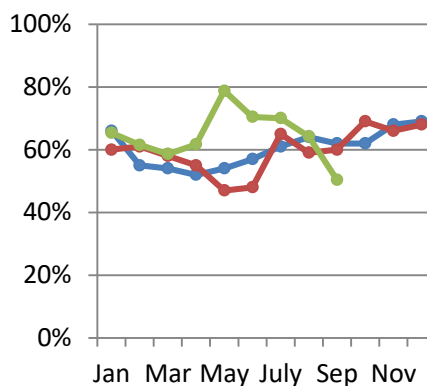
Myanmar



Thailand



Viet Nam

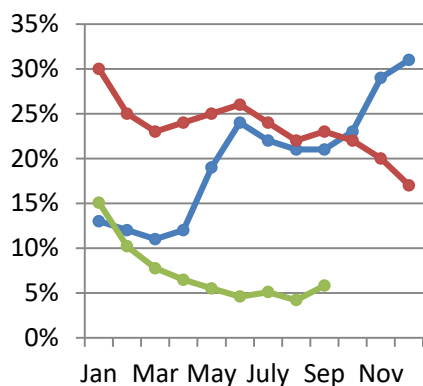


*Percentage of *P. falciparum* cases is calculated as number of confirmed cases due to *P. falciparum* divided by total confirmed cases per month per country.

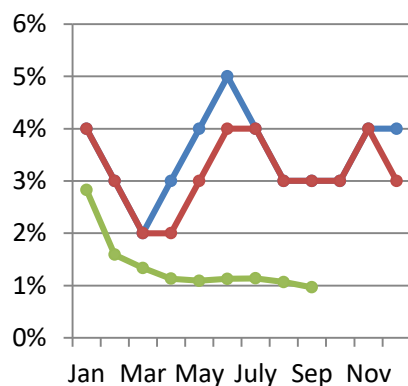
Monthly test positivity rate (TPR) by country* (2017–2019)

— 2017 — 2018 — 2019

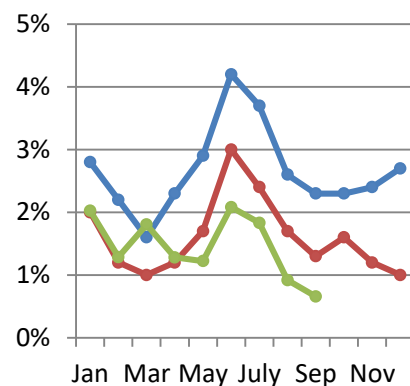
Cambodia



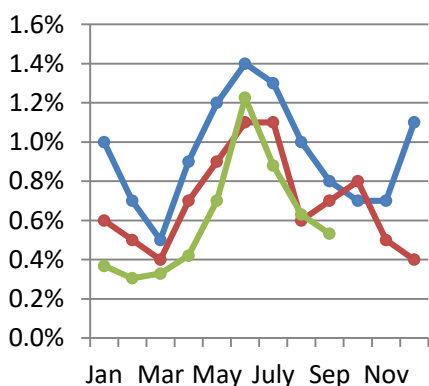
Lao PDR



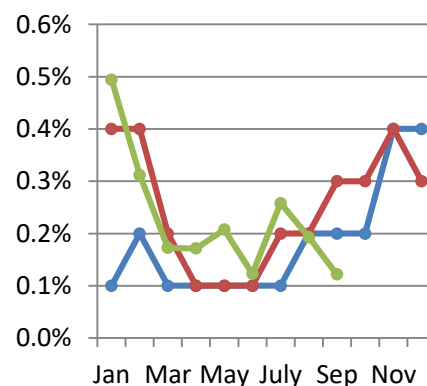
Myanmar



Thailand



Viet Nam



*TPR is calculated as number of confirmed cases divided by number of tested cases (including rapid diagnostic tests and microscopy) per month per country.

Monthly malaria cases and deaths by country in 2018 (January–December)

| Country | Surveillance indicator ¹ | Jan | Feb | Mar | Apr | May | Jun | Jul | Aug | Sep | Oct | Nov | Dec |
|-----------------------|-------------------------------------|-------------------|--------|--------|--------|--------|--------|--------|--------|--------|--------|--------|--------|
| Cambodia | Deaths | 0 | 0 | 0 | 0 | 0 | 0 | 0 | 0 | 0 | 0 | 0 | 0 |
| | Suspected cases tested | 18714 | 16579 | 18135 | 18303 | 20314 | 26373 | 29676 | 30026 | 27773 | 27882 | 26978 | 28571 |
| | Confirmed cases | 5591 | 4170 | 4102 | 4368 | 5136 | 6832 | 7059 | 6514 | 6315 | 6095 | 5459 | 4745 |
| | <i>P. falciparum</i> cases | 2473 | 1501 | 1267 | 1371 | 1388 | 1995 | 1838 | 1389 | 1513 | 1402 | 1168 | 884 |
| | <i>P. vivax</i> cases | 2933 | 2561 | 2735 | 2877 | 3554 | 4631 | 4976 | 4937 | 4633 | 4573 | 4168 | 3767 |
| | Mixed cases | 185 | 108 | 100 | 120 | 194 | 206 | 245 | 188 | 169 | 120 | 123 | 94 |
| | Other cases | 0 | 0 | 0 | 0 | 0 | 0 | 0 | 0 | 0 | 0 | 0 | 0 |
| China ² | Deaths | 0 | 0 | 0 | 1 | 0 | 0 | 0 | 0 | 0 | 0 | 0 | 0 |
| | Suspected cases tested | 10961 | 8712 | 10488 | 10391 | 14468 | 13994 | 14404 | 16670 | 13344 | 14245 | 12095 | 12060 |
| | Confirmed cases | 11 | 14 | 20 | 23 | 25 | 32 | 21 | 12 | 8 | 1 | 3 | 2 |
| | <i>P. falciparum</i> cases | 1 | 0 | 0 | 2 | 0 | 0 | 1 | 0 | 0 | 0 | 1 | 0 |
| | <i>P. vivax</i> cases | 10 | 13 | 20 | 21 | 25 | 32 | 20 | 12 | 8 | 1 | 2 | 2 |
| | Mixed cases | 0 | 0 | 0 | 0 | 0 | 0 | 0 | 0 | 0 | 0 | 0 | 0 |
| | Other cases | 0 | 0 | 0 | 0 | 0 | 0 | 0 | 0 | 0 | 0 | 0 | 0 |
| Lao PDR | Deaths | 1 | 0 | 0 | 0 | 0 | 1 | 2 | 0 | 0 | 1 | 1 | 0 |
| | Suspected cases tested | 16680 | 15402 | 17095 | 17592 | 22529 | 25872 | 28448 | 29772 | 31255 | 29269 | 24368 | 29570 |
| | Confirmed cases | 685 | 457 | 390 | 425 | 762 | 970 | 1006 | 761 | 802 | 911 | 922 | 946 |
| | <i>P. falciparum</i> cases | 445 | 223 | 192 | 227 | 448 | 544 | 563 | 367 | 406 | 450 | 495 | 468 |
| | <i>P. vivax</i> cases | 231 | 226 | 190 | 192 | 309 | 416 | 433 | 388 | 387 | 450 | 407 | 469 |
| | Mixed cases | 9 | 8 | 8 | 6 | 5 | 10 | 10 | 6 | 9 | 11 | 20 | 9 |
| | Other cases | 0 | 0 | 0 | 0 | 0 | 0 | 0 | 0 | 0 | 0 | 0 | 0 |
| Myanmar | Deaths | 1 | 1 | 1 | 1 | 1 | 5 | 1 | 1 | 1 | 3 | 3 | 0 |
| | Suspected cases tested | 87965 | 92146 | 93140 | 85631 | 97133 | 103497 | 124868 | 132246 | 147269 | 130228 | 114470 | 112368 |
| | Confirmed cases | 1731 | 1072 | 916 | 1016 | 1694 | 3057 | 2989 | 2227 | 1913 | 2023 | 1319 | 1096 |
| | <i>P. falciparum</i> cases | 1111 | 627 | 506 | 514 | 960 | 1828 | 1804 | 1443 | 1242 | 1332 | 773 | 622 |
| | <i>P. vivax</i> cases | 572 | 426 | 395 | 487 | 714 | 1203 | 1136 | 742 | 624 | 657 | 520 | 461 |
| | Mixed cases | 51 | 20 | 17 | 18 | 25 | 47 | 57 | 42 | 48 | 35 | 26 | 12 |
| | Other cases | 0 | 0 | 0 | 1 | 0 | 0 | 0 | 0 | 1 | 0 | 0 | 2 |
| Thailand ³ | Deaths | Data not provided | | | | | | | | | | | |
| | Suspected cases tested | 78393 | 75602 | 69544 | 66027 | 83232 | 93596 | 83609 | 91165 | 74765 | 75294 | 94681 | 81992 |
| | Confirmed cases | 463 | 392 | 305 | 438 | 740 | 1026 | 879 | 592 | 524 | 597 | 455 | 339 |
| | <i>P. falciparum</i> cases | 58 | 42 | 47 | 53 | 87 | 117 | 84 | 64 | 69 | 83 | 64 | 53 |
| | <i>P. vivax</i> cases | 368 | 321 | 238 | 367 | 609 | 860 | 752 | 501 | 413 | 489 | 369 | 269 |
| | Mixed cases | 7 | 9 | 7 | 3 | 14 | 12 | 8 | 2 | 8 | 4 | 4 | 1 |
| | Other cases | 30 | 20 | 13 | 15 | 30 | 37 | 35 | 25 | 34 | 21 | 18 | 16 |
| Viet Nam | Deaths | 0 | 0 | 0 | 1 | 0 | 0 | 0 | 0 | 0 | 0 | 0 | 0 |
| | Suspected cases tested | 146677 | 121634 | 165569 | 176352 | 204014 | 185103 | 166957 | 169698 | 171835 | 172351 | 157244 | 152475 |
| | Confirmed cases | 614 | 475 | 357 | 255 | 209 | 195 | 265 | 281 | 451 | 594 | 645 | 472 |
| | <i>P. falciparum</i> cases | 368 | 290 | 206 | 139 | 99 | 93 | 173 | 165 | 270 | 412 | 426 | 319 |
| | <i>P. vivax</i> cases | 229 | 169 | 138 | 106 | 101 | 96 | 88 | 112 | 173 | 180 | 215 | 151 |
| | Mixed cases | 16 | 15 | 11 | 8 | 7 | 5 | 4 | 1 | 6 | 2 | 3 | 2 |
| | Other cases | 1 | 1 | 2 | 2 | 2 | 1 | 0 | 3 | 2 | 0 | 1 | 0 |

¹ Mixed cases include cases identified with more than one *Plasmodium* species. Other cases refer to *P. malariae*, *P. ovale*, *P. knowlesi* and unknown. Data in the

预览已结束，完整报告链接和二维码如下：

https://www.yunbaogao.cn/report/index/report?reportId=5_25033

