



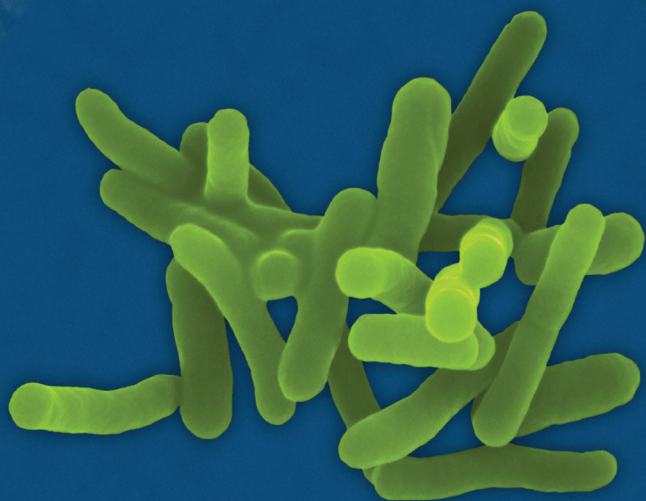
Food and Agriculture
Organization of the
United Nations



ISSN 1726-5274
World Health
Organization

Attributing illness caused by Shiga toxin-producing *Escherichia coli* (STEC) to specific foods

REPORT



32

MICROBIOLOGICAL RISK
ASSESSMENT SERIES

Attributing illness caused by Shiga toxin-producing *Escherichia coli* (STEC) to specific foods

REPORT

Required citation:

FAO and WHO. 2019. Attributing illness caused by Shiga toxin-producing *Escherichia coli* (STEC) to specific foods. Microbiological Risk Assessment Series No. 32. Rome. 74 pp. Licence: CC BY-NC-SA 3.0 IGO.

The designations employed and the presentation of material in this information product do not imply the expression of any opinion whatsoever on the part of the Food and Agriculture Organization of the United Nations (FAO) or the World Health Organization (WHO) concerning the legal or development status of any country, territory, city or area or of its authorities, or concerning the delimitation of its frontiers or boundaries. The mention of specific companies or products of manufacturers, whether or not these have been patented, does not imply that these have been endorsed or recommended by FAO or WHO in preference to others of a similar nature that are not mentioned.

The views expressed in this information product are those of the author(s) and do not necessarily reflect the views or policies of FAO or WHO.

ISBN 978-92-5-131746-4 (FAO)

ISBN 978-92-4-151639-6 (WHO)

© FAO and WHO, 2019



Some rights reserved. This work is made available under the Creative Commons Attribution-NonCommercial-ShareAlike 3.0 IGO licence (CC BY-NC-SA 3.0 IGO; <https://creativecommons.org/licenses/by-nc-sa/3.0/igo/>).

Under the terms of this licence, this work may be copied, redistributed and adapted for non-commercial purposes, provided that the work is appropriately cited. In any use of this work, there should be no suggestion that FAO or WHO endorses any specific organization, products or services. The use of the FAO or WHO logo is not permitted. If the work is adapted, then it must be licensed under the same or equivalent Creative Commons license. If a translation of this work is created, it must include the following disclaimer along with the required citation: "This translation was not created by the Food and Agriculture Organization of the United Nations (FAO) or the World Health Organization (WHO). Neither FAO nor WHO is responsible for the content or accuracy of this translation. The original [Language] edition shall be the authoritative edition.

Disputes arising under the licence that cannot be settled amicably will be resolved by mediation and arbitration as described in Article 8 of the licence except as otherwise provided herein. The applicable mediation rules will be the mediation rules of the World Intellectual Property Organization <http://www.wipo.int/amc/en/mediation/rules> and any arbitration will be conducted in accordance with the Arbitration Rules of the United Nations Commission on International Trade Law (UNCITRAL).

Users wishing to reuse material from this work that is attributed to a third party, such as tables, figures or images, are responsible for determining whether permission is needed for that reuse and for obtaining permission from the copyright holder. The risk of claims resulting from infringement of any third-party-owned component in the work rests solely with the user.

FAO information products are available on the FAO website (www.fao.org/publications) and can be purchased through publications-sales@fao.org. Requests for commercial use should be submitted via: www.fao.org/contact-us/licence-request. Queries regarding rights and licensing should be submitted to: copyright@fao.org.

Cover picture © Dennis Kunkel Microscopy, Inc



Contents

Acknowledgements	v
Contributors	vi
Declarations of Interest	viii
Abbreviations	ix
Executive Summary	x
1 Introduction	1
2 Source attribution of STEC illnesses	2
2.1. Overview of source attribution concepts	2
2.2. Summary of the findings from the FERG expert elicitation	3
2.3. Source attribution approach used in this report	3
3 An analysis of data from outbreak investigations	6
3.1. Background and objective	6
3.2. Methods	6
3.2.1. Data	6
3.2.2. Food categorization	7
3.2.3. Model overview	7
3.3. Results	9
3.3.1 Data used in the model	9
3.3.2 Attribution to foods	10
4 A systematic review of case-control studies of sporadic infections	14
4.1. Background and objective	14
4.2. Methods	14
4.2.1. Assessment of existing systematic reviews	15
4.2.2. Population Exposure Comparator Outcome Study Design (PECOS)	15
4.2.3. Search strategy	15
4.2.4. Citation collection, deduplication and screening	16
4.2.5. Data extraction and quality assessment	17
4.2.6. Analysis	18

4.3. Results	19
4.3.1. Numbers of citations identified	19
4.3.2. Description of the identified studies	25
4.3.3. Food items associated with STEC infection	29
5 Discussion and conclusions	36
5.1 Discussion of the main findings	36
5.2 Comparison with FERG estimates	38
5.3 Data limitations and their impacts	39
5.3.1 Lack of data	39
5.3.2 Temporal changes	40
5.3.3 Categorization of food items	40
5.3.4 STEC serogroups	41
5.4 Conclusions	41
References	42
ANNEXES	
Annex 1. Total number of STEC outbreaks reported per country and WHO region	50
Annex 2. Comprehensive list of STEC serogroups	51
Annex 3. Results of the meta-analysis using the alternate method	54
Annex 4. Results of the analysis of univariate moderating effects of study characteristics, using the alternate method	56

Acknowledgements

The Food and Agriculture Organization of the United Nations and the World Health Organization would like to express their appreciation to all those who contributed to the preparation of this document through the provision of their time, expertise and other relevant information before, during and after the meeting, as well as in preliminary meetings on this issue. In particular, appreciation is extended to Dr Shannon E. Majowicz for leading the work on case-control studies, Dr Sara Monteiro Pires for leading the work on outbreak investigations, and Dr Brecht Devleesschauwer for leading the work on data analysis. All contributors are listed on the following pages.

Appreciation is also extended to all those who responded to the calls for data that were issued by FAO and WHO and provided information that was not readily available in the peer reviewed literature or the public domain.

FAO and WHO would also like to acknowledge the financial resources provided by Canada, Japan and the United States of America to support this work.

Contributors

Dr Shannon E. Majowicz, Associate Professor, School of Public Health and Health Systems, University of Waterloo, Canada

Dr Sara Monteiro Pires, Senior Researcher, Risk Benefit Research Group Division of Diet, Disease Prevention and Toxicology, National Food Institute, Technical University of Denmark, Denmark

Dr Brecht Devleesschauwer, Department of Epidemiology and Public Health, Sciensano, Brussels, Belgium

RESOURCE PERSONS

Dr Hiroshi Asakura, Director, Division of Biomedical Food Research, National Institute of Health Sciences, Japan

Dr Patricia Desmarchelier, Director, Food Safety Principles, Australia

Dr Roger Cook, Manager, Food Risk Assessment and Principal Microbiologist, Ministry for Primary Industries, New Zealand

Dr Eelco Franz, National Institute for Public Health and the Environment (RIVM), Centre for Infectious Disease Control, The Netherlands

Dr Pina Fratamico, Agricultural Research Service, Eastern Regional Research Center (ERRC), United States Department of Agriculture, United States of America

Dr Alex Gill, Principal Investigator, Verotoxigenic *Escherichia coli* Laboratory, Bureau of Microbial Hazards, Health Canada, Canada

Dr Patricia Griffin, Chief, Enteric Diseases Epidemiology Branch, Division of Foodborne, Waterborne, and Environmental Diseases, National Center for Emerging and Zoonotic Infectious Diseases, Centers for Disease Control and Prevention, United States of America

Dr Weidong Gu, Mathematical Statistician, Enteric Diseases Epidemiology Branch, Division of Foodborne, Waterborne, and Environmental Diseases, National Center for Emerging and Zoonotic Infectious Diseases, Centers for Disease Control and Prevention, United States of America

Dr Roberto Vidal Alvarez, Professor, Head Laboratory of Pathogenic *Escherichia coli* (LPE), Institute of Biomedical Sciences, Faculty of Medicine, Universidad de Chile, Santiago de Chile

JEMRA SECRETARIAT

Sarah Cahill, Food Safety Officer, Food Safety and Quality Unit, Agriculture and Consumer Protection Department, Food and Agriculture Organization of the United Nations, Italy

Jeffrey LeJeune, Food Safety Officer, Food Safety and Quality Unit, Agriculture and Consumer Protection Department, Food and Agriculture Organization of the United Nations, Italy

Blaise Ouattara, Food Safety and Quality Officer, Food Safety and Quality Unit, Agriculture and Consumer Protection Department, Food and Agriculture Organization of the United Nations, Italy

Kang Zhou, Food Safety and Quality Officer, Food Safety and Quality Unit, Agriculture and Consumer Protection Department, Food and Agriculture Organization of the United Nations, Italy

Rei Nakagawa, Technical Officer, Department of Food Safety and Zoonoses, World Health Organization, Switzerland

Satoko Murakami, Technical Officer, Department of Food Safety and Zoonoses, World Health Organization, Switzerland

预览已结束，完整报告链接和工

<https://www.yunbaogao.cn/report/index/report?re>