



# Mekong Malaria Elimination Programme Epidemiology summary

Volume 6, April–June 2019



## Overview (April–June 2019)

From April to June 2019, Greater Mekong Subregion (GMS) countries reported 16 225 malaria cases, representing a 40% decrease compared to the same time period in 2018.

### Cambodia

The country reported 7467 cases, a 54% decrease compared to the same time period in 2018. Cases are mostly in the north-eastern and south-western regions of Cambodia, along the forested border areas with Viet Nam, Lao PDR and Thailand.

### China

The country reported no indigenous cases.

### Lao People's Democratic Republic (PDR)

The country reported 1544 cases, a 28% decrease compared to the same time period in 2018. Most cases are in the five southern provinces.

### Myanmar

The country reported 4416 cases, a 23% decrease compared to the same time period in 2018. Most cases are in the border states/region to India and Bangladesh.

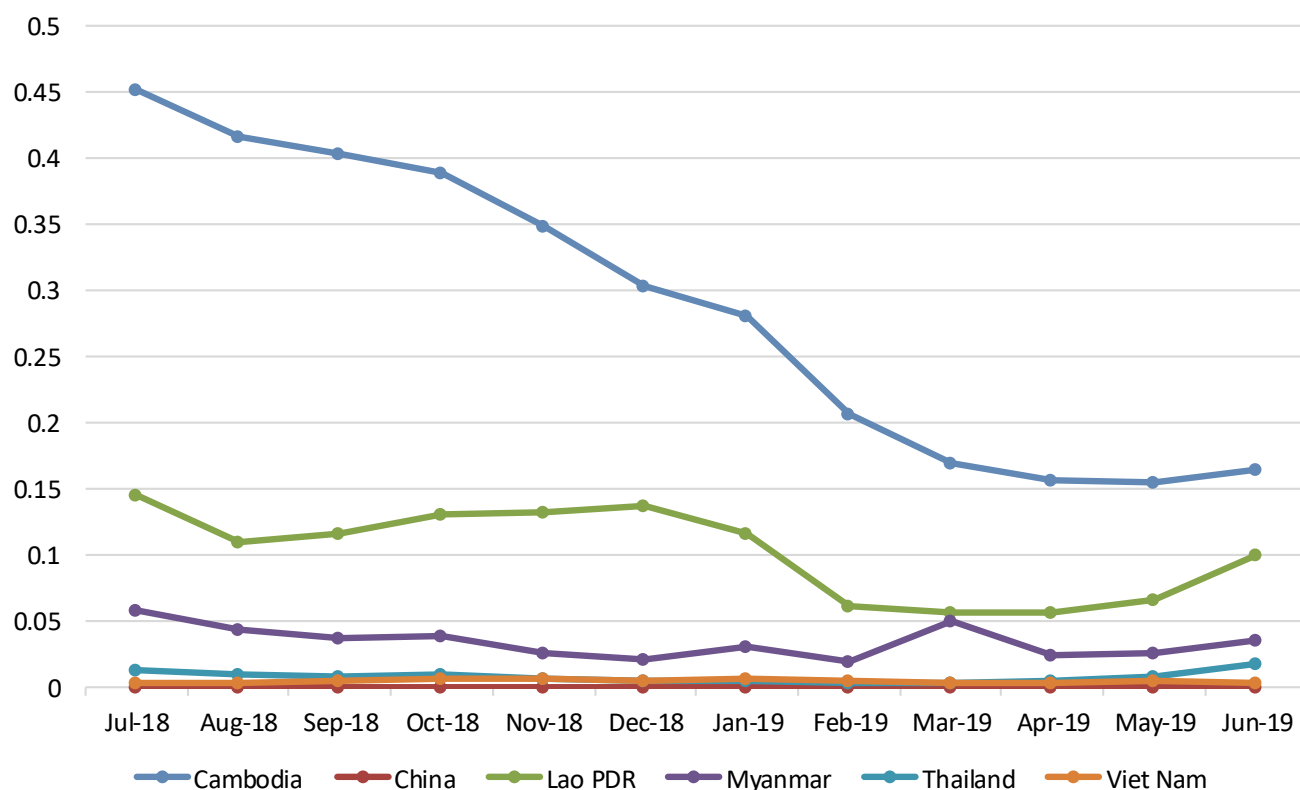
### Thailand

The country reported 1949 cases, a 12% decrease compared to the same time period in 2018. Most cases are in the border provinces to Malaysia, Myanmar and Cambodia.

### Viet Nam

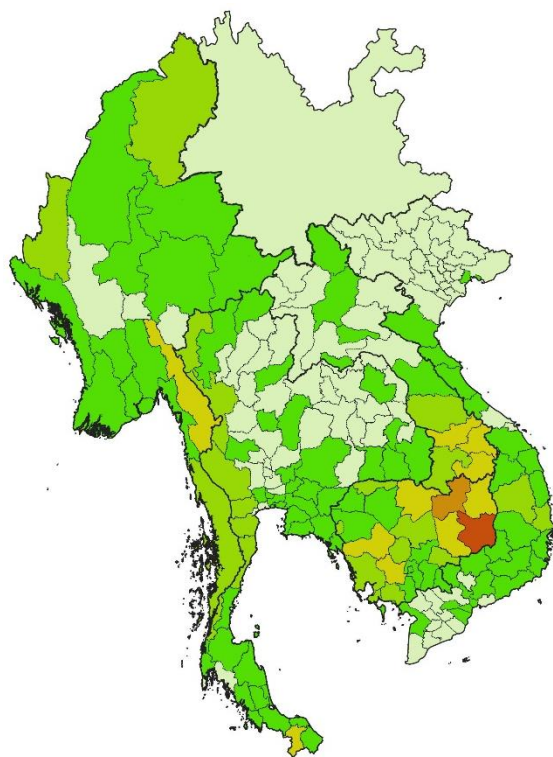
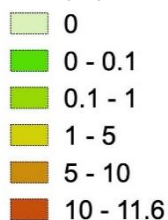
The country reported 849 cases, a 29% increase compared to the same time period in 2018. Most cases are indigenous and located in the border provinces to Cambodia.

## Monthly malaria incidence in the GMS (last 12 months)\*



\*Incidence is calculated as the number of reported cases per month per 1000 population.

Incidence per  
1000 population



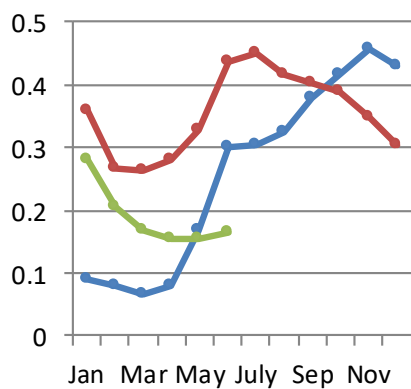
The boundaries and names shown and the designations used on this map do not imply the expression of any opinion whatsoever on the part of the World Health Organization concerning the legal status of any country, territory, city or area or of its authorities, or concerning the delimitation of its frontiers or boundaries. Dotted and dashed lines on maps represent approximate border lines for which there may not yet be full agreement.

\*Incidence is calculated as the number of reported cases from April to June 2019 per 1000 population.

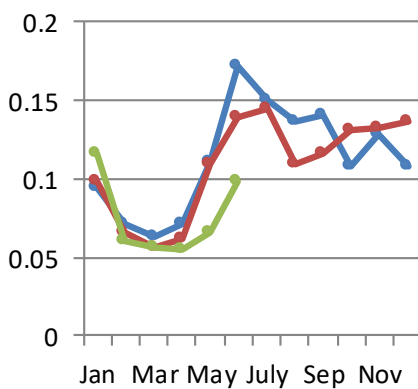
## Monthly malaria incidence by country\* (2017–2019)

— 2017 — 2018 — 2019

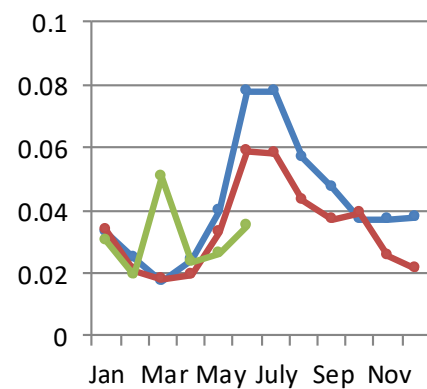
### Cambodia



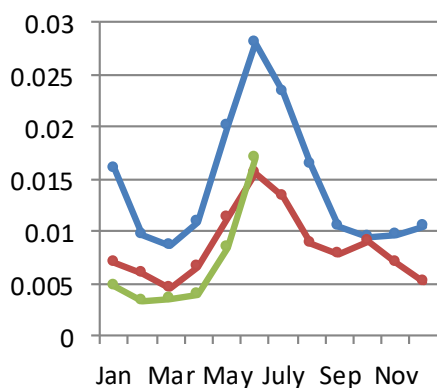
### Lao PDR



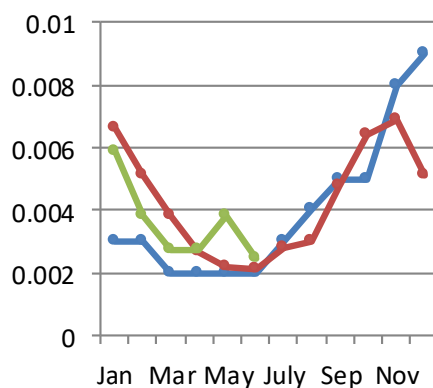
### Myanmar



### Thailand



### Viet Nam

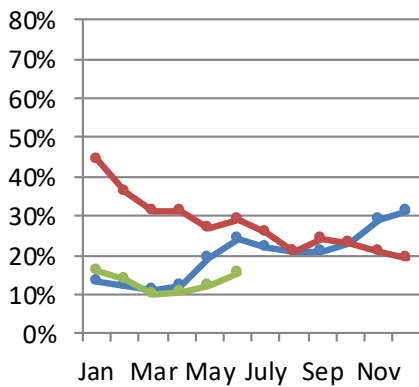


\*Incidence is calculated as the number of reported cases per month per 1000 population.

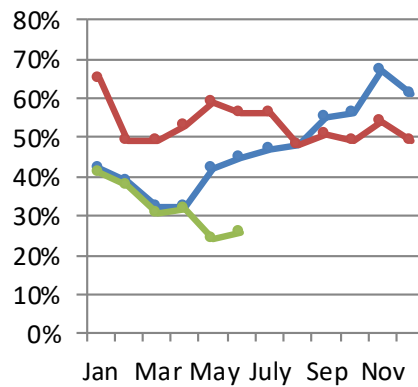
## Percentage of *P. falciparum* cases by month by country\* (2017–2019)

— 2017 — 2018 — 2019

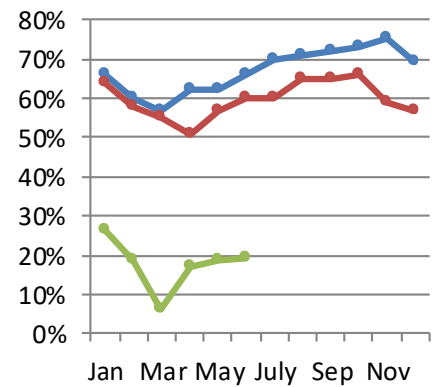
### Cambodia



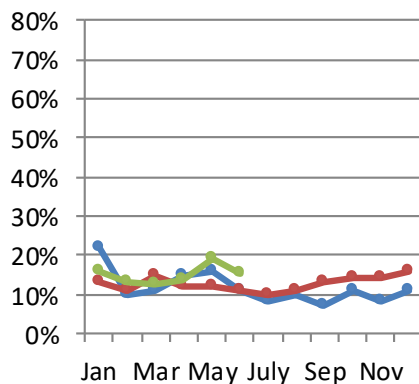
### Lao PDR



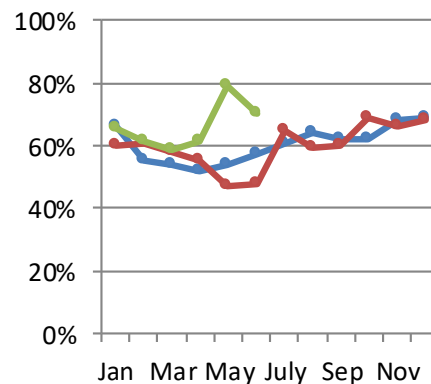
### Myanmar



### Thailand



### Viet Nam

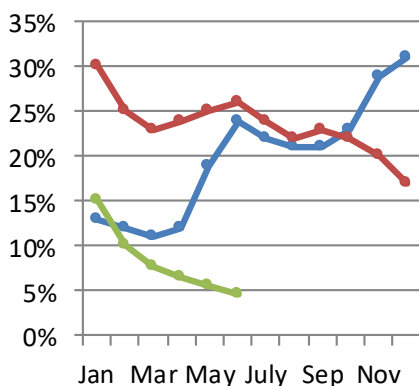


\*Percentage of *P. falciparum* cases is calculated as number of confirmed cases due to *P. falciparum* divided by total confirmed cases per month per country.

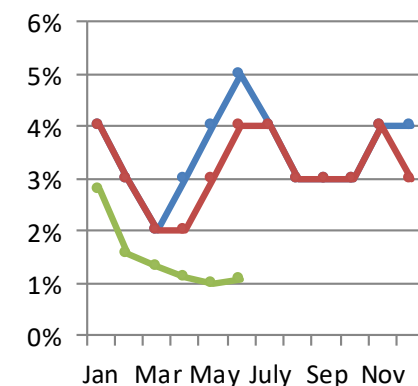
## Monthly test positivity rate (TPR) by country\* (2017–2019)

— 2017 — 2018 — 2019

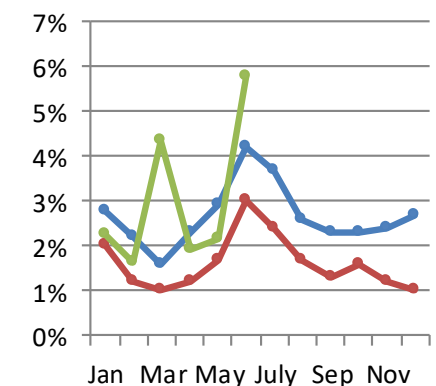
### Cambodia



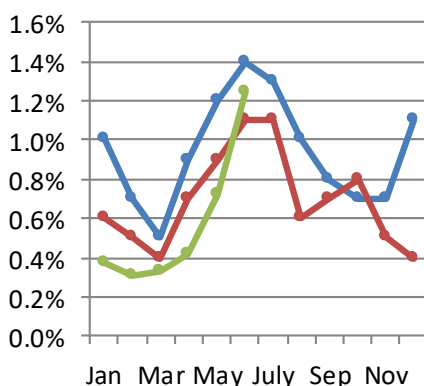
### Lao PDR



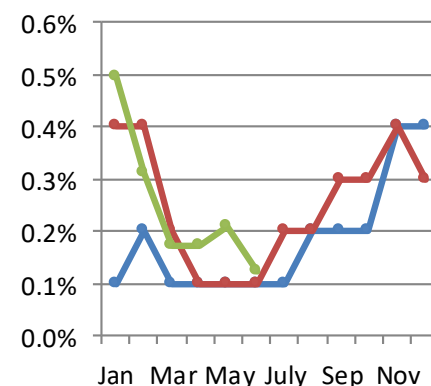
### Myanmar



### Thailand



### Viet Nam



\*TPR is calculated as number of confirmed cases divided by number of tested cases (including rapid diagnostic tests and microscopy) per month per country.

# Monthly malaria cases and deaths by country in 2018 (January–December)

Country	Surveillance indicator <sup>1</sup>	Jan	Feb	Mar	Apr	May	Jun	Jul	Aug	Sep	Oct	Nov	Dec
Cambodia	Deaths	0	0	0	0	0	0	0	0	0	0	0	0
	Suspected cases tested	18714	16579	18135	18303	20314	26373	29676	30026	27773	27882	26978	28571
	Confirmed cases	5591	4170	4102	4368	5136	6832	7059	6514	6315	6095	5459	4745
	<i>P. falciparum</i> cases	2473	1501	1267	1371	1388	1995	1838	1389	1513	1402	1168	884
	<i>P. vivax</i> cases	2933	2561	2735	2877	3554	4631	4976	4937	4633	4573	4168	3767
	Mixed cases	185	108	100	120	194	206	245	188	169	120	123	94
	Other cases	0	0	0	0	0	0	0	0	0	0	0	0
China	Deaths	0	0	0	1	0	0	0	0	0	0	0	0
	Suspected cases tested	10961	8712	10488	10391	14468	13994	14404	16670	13344	14245	12095	12060
	Confirmed cases	11	14	20	23	25	32	21	12	8	1	3	2
	<i>P. falciparum</i> cases	1	0	0	2	0	0	1	0	0	0	1	0
	<i>P. vivax</i> cases	10	13	20	21	25	32	20	12	8	1	2	2
	Mixed cases	0	0	0	0	0	0	0	0	0	0	0	0
	Other cases	0	1	0	0	0	0	0	0	0	0	0	0
Lao PDR	Deaths	1	0	0	0	0	1	2	0	0	1	1	0
	Suspected cases tested	16680	15402	17095	17591	22527	25872	28444	29751	31295	29285	24261	28868
	Confirmed cases	685	457	390	425	762	969	1006	762	802	907	919	944
	<i>P. falciparum</i> cases	445	223	192	227	448	544	563	368	406	447	494	466
	<i>P. vivax</i> cases	231	226	190	192	309	415	433	388	387	449	405	469
	Mixed cases	9	8	8	6	5	10	10	6	9	11	20	9
	Other cases	0	0	0	0	0	0	0	0	0	0	0	0
Myanmar	Deaths	1	1	1	1	1	5	1	1	1	3	3	0
	Suspected cases tested	87965	92146	93140	85631	97133	103497	124868	132246	147269	130228	114470	112368
	Confirmed cases	1731	1072	916	1016	1694	3057	2989	2227	1913	2023	1319	1096
	<i>P. falciparum</i> cases	1111	627	506	514	960	1828	1804	1443	1242	1332	773	622
	<i>P. vivax</i> cases	572	426	395	487	714	1203	1136	742	624	657	520	461
	Mixed cases	51	20	17	18	25	47	57	42	48	35	26	12
	Other cases	0	0	0	1	0	0	0	0	1	0	0	2
Thailand <sup>2</sup>	Deaths	Data not provided											
	Suspected cases tested	78393	75602	69544	66027	83232	93596	83609	91165	74765	75294	94681	81992
	Confirmed cases	463	392	305	438	740	1026	879	592	524	597	455	339
	<i>P. falciparum</i> cases	58	42	47	53	87	117	84	64	69	83	64	53
	<i>P. vivax</i> cases	368	321	238	367	609	860	752	501	413	489	369	269
	Mixed cases	7	9	7	3	14	12	8	2	8	4	4	1
	Other cases	30	20	13	15	30	37	35	25	34	21	18	16
Viet Nam	Deaths	0	0	0	1	0	0	0	0	0	0	0	0
	Suspected cases tested	146677	121634	165569	176352	204014	185103	166957	169698	171835	172351	157244	152475
	Confirmed cases	614	475	357	255	209	195	265	281	451	594	645	472
	<i>P. falciparum</i> cases	368	290	206	139	99	93	173	165	270	412	426	319
	<i>P. vivax</i> cases	229	169	138	106	101	96	88	112	173	180	215	151
	Mixed cases	16	15	11	8	7	5	4	1	6	2	3	2
	Other cases	1	1	2	2	2	1	0	3	2	0	1	0

<sup>1</sup> Mixed cases include cases identified with more than one *Plasmodium* species. Other cases refer to *P. malariae*, *P. ovale*, *P. knowlesi* and unknown. Data in the

预览已结束，完整报告链接和二维码如下：

[https://www.yunbaogao.cn/report/index/report?reportId=5\\_25164](https://www.yunbaogao.cn/report/index/report?reportId=5_25164)

