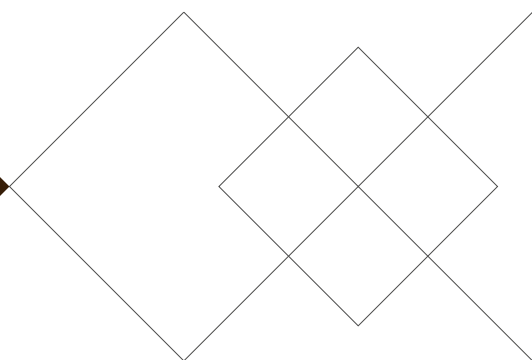


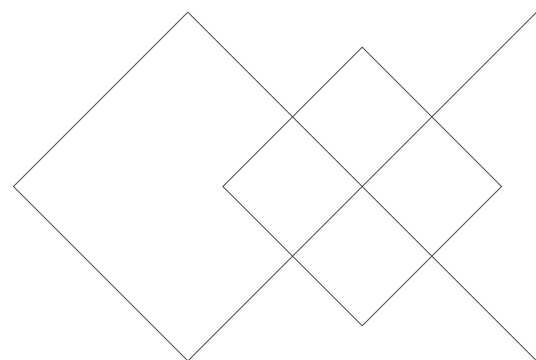
Continuity and coordination of care

A practice brief to support implementation
of the WHO Framework on integrated
people-centred health services



Continuity and coordination of care

A practice brief to support implementation
of the WHO Framework on integrated
people-centred health services



Continuity and coordination of care: a practice brief to support implementation of the WHO Framework on integrated people-centred health services

ISBN 978-92-4-151403-3

© World Health Organization 2018

Some rights reserved. This work is available under the Creative Commons Attribution-NonCommercial-ShareAlike 3.0 IGO licence (CC BY-NC-SA 3.0 IGO; <https://creativecommons.org/licenses/by-nc-sa/3.0/igo>).

Under the terms of this licence, you may copy, redistribute and adapt the work for non-commercial purposes, provided the work is appropriately cited, as indicated below. In any use of this work, there should be no suggestion that WHO endorses any specific organization, products or services. The use of the WHO logo is not permitted. If you adapt the work, then you must license your work under the same or equivalent Creative Commons licence. If you create a translation of this work, you should add the following disclaimer along with the suggested citation: "This translation was not created by the World Health Organization (WHO). WHO is not responsible for the content or accuracy of this translation. The original English edition shall be the binding and authentic edition".

Any mediation relating to disputes arising under the licence shall be conducted in accordance with the mediation rules of the World Intellectual Property Organization.

Suggested citation. Continuity and coordination of care: a practice brief to support implementation of the WHO Framework on integrated people-centred health services. Geneva: World Health Organization; 2018. Licence: CC BY-NC-SA 3.0 IGO.

Cataloguing-in-Publication (CIP) data. CIP data are available at <http://apps.who.int/iris>.

Sales, rights and licensing. To purchase WHO publications, see <http://apps.who.int/bookorders>. To submit requests for commercial use and queries on rights and licensing, see <http://www.who.int/about/licensing>.

Third-party materials. If you wish to reuse material from this work that is attributed to a third party, such as tables, figures or images, it is your responsibility to determine whether permission is needed for that reuse and to obtain permission from the copyright holder. The risk of claims resulting from infringement of any third-party-owned component in the work rests solely with the user.

General disclaimers. The designations employed and the presentation of the material in this publication do not imply the expression of any opinion whatsoever on the part of WHO concerning the legal status of any country, territory, city or area or of its authorities, or concerning the delimitation of its frontiers or boundaries. Dotted and dashed lines on maps represent approximate border lines for which there may not yet be full agreement.

The mention of specific companies or of certain manufacturers' products does not imply that they are endorsed or recommended by WHO in preference to others of a similar nature that are not mentioned. Errors and omissions excepted, the names of proprietary products are distinguished by initial capital letters.

All reasonable precautions have been taken by WHO to verify the information contained in this publication. However, the published material is being distributed without warranty of any kind, either expressed or implied. The responsibility for the interpretation and use of the material lies with the reader. In no event shall WHO be liable for damages arising from its use.

Printed in Spain

Concept & layout: Paprika (Annecy, France)

The photos used in this publication are © WHO and © The World Bank

Contents

Preface.....	4
Acknowledgements.....	7
Glossary.....	8
Executive summary.....	9
1. Introduction.....	12
2. Concepts.....	16
3. Priority practices.....	22
Priority 1: Continuity with a primary care professional.....	23
Priority 2: Collaborative planning of care and shared decision-making.....	27
Priority 3: Case management for people with complex needs.....	31
Priority 4: Collocated services or a single point of access.....	34
Priority 5: Transitional or intermediate care.....	37
Priority 6: Comprehensive care along the entire pathway.....	40
Priority 7: Technology to support continuity and care coordination.....	43
Priority 8: Building workforce capability.....	45
4. Putting priorities into practice.....	50
5. Conclusions.....	56
6. References.....	58
Annex 1. Framework on integrated people-centred health services.....	64
Annex 2. Methods used.....	65

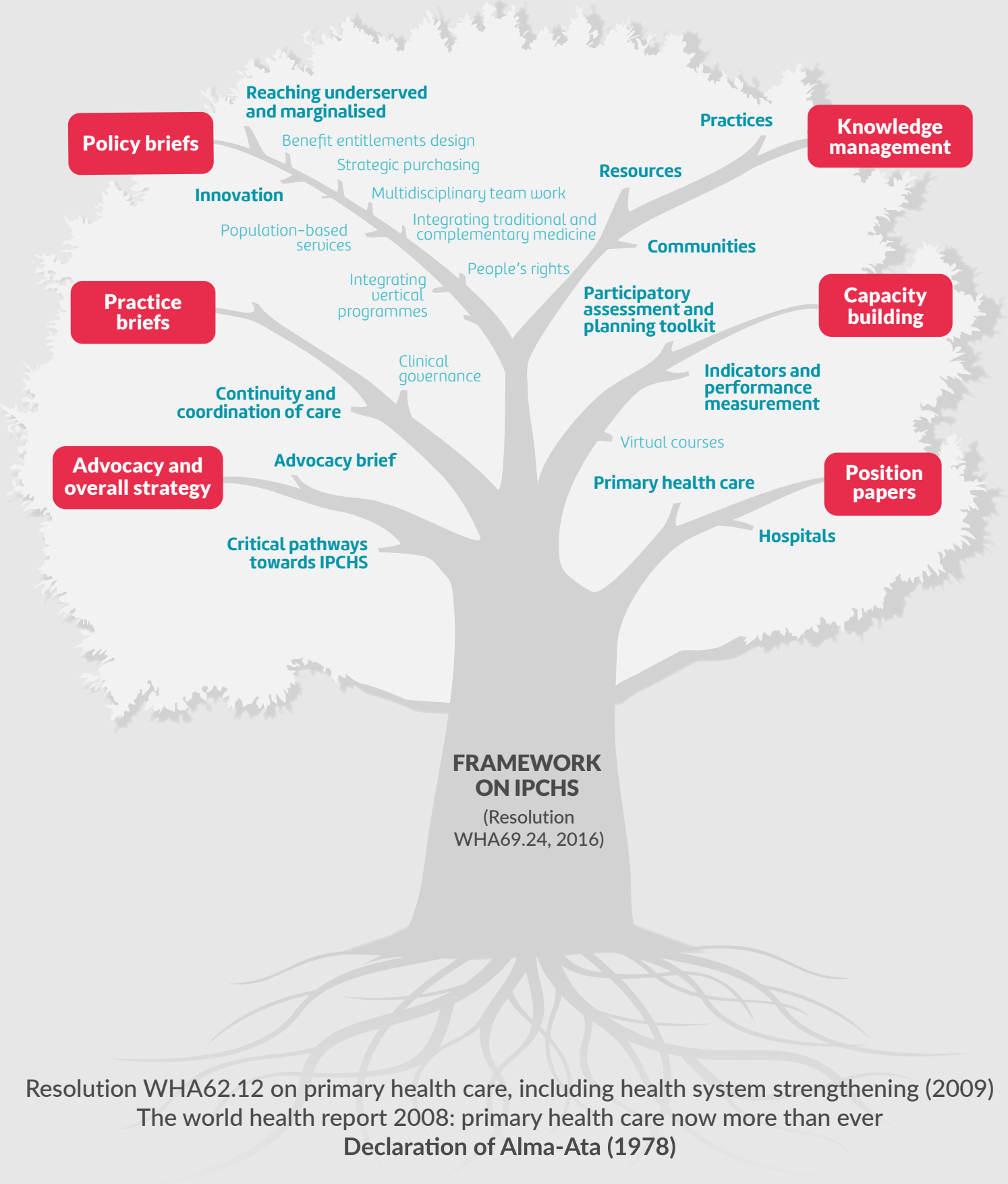
Preface

This practice brief on the continuity and coordination of care addresses the conditions and ongoing relationships needed to support seamless interactions among multiple providers within interdisciplinary teams and/or across care settings and/or sectors. It is part of a suite of WHO resources to support implementation of the Framework on integrated people-centred health services (IPCHS), approved by the World Health Assembly in 2016.

For health care and coverage to be truly universal, health services designed around diseases and health institutions must be transformed into health services designed for people, with people. The IPCHS Framework provides guidance to practitioners, provider organizations and system leaders to organize, manage and deliver care that best meets people's comprehensive health needs, irrespective of country setting or development status. It promotes cross-cutting collaboration and integration across sectors, health care settings, providers and users.

IPCHS implementation support encompasses guidance, products and tools, including advocacy materials, strategy papers, position papers, policy and practice briefs, capacity-building toolkits, knowledge management platforms and technical assistance to countries. For more information, see our dedicated WHO webpage (www.who.int/servicedeliverysafety/areas/people-centred-care) and knowledge management platform (www.integratedcare4people.org).

Integrated people-centred health services implementation support guidance, products and tools



Dare to transform

Integrated people-centred health services



World Health
Organization

预览已结束，完整报告链接和二维码如下：

https://www.yunbaogao.cn/report/index/report?reportId=5_25519

